

Product datasheet

Recombinant Human NSE protein ab53387

1 Image

Description

Product name	Recombinant Human NSE protein
Purity	> 95 % SDS-PAGE.
Expression system	Escherichia coli
Protein length	Protein fragment
Animal free	No
Nature	Recombinant
Species	Human
Sequence	<p>SIEKIWARE ILDSRGNPTV EVDLYTAKGL FRAAVPSGAS TGIYEALRLR DGDQKQRYL GK GVLKAVDHIN STIAPALISS GLSVVEQEKL DNLMLELDGT ENKSKFGANA ILGVSLAVCK AGAAERELPL YRHIAQLAGN SDLILPVPAF NVINGGSHAG NKLAMQEFMI LPVGAESFRD AMRLGAEVYH TLKGVIKDKY GKDATNVGDE GGFAPNILEN SEALELVKEA IDKAGYTEKI VIGMDVAASE FYRDGKYDLD FKSPTDPSRY ITGDQLGALY QDFVRDYPVV SIEDPFDQDD WAAWSKFTAN VGIQVGGDDL TVTNPKRIER AVEEKACNCL LLKVNQIGSV TEAIQACKLA QENGGWVMVS HRSGETEDTF IADLVVGLCT GQIKTGAPCR SERLAKYNQL MRIEEEELGDE ARFAGHNFRN PSVL</p>
Amino acids	2 to 434

Specifications

Our [Abpromise guarantee](#) covers the use of **ab53387** in the following tested applications.

The application notes include recommended starting dilutions; optimal dilutions/concentrations should be determined by the end user.

Applications	SDS-PAGE
Form	Liquid

Preparation and Storage

Stability and Storage

Shipped at 4°C. Upon delivery aliquot and store at -20°C. Avoid freeze / thaw cycles.

pH: 8.00

Constituents: 0.242% Tris, 50% Glycerol

General Info

Function

Has neurotrophic and neuroprotective properties on a broad spectrum of central nervous system (CNS) neurons. Binds, in a calcium-dependent manner, to cultured neocortical neurons and promotes cell survival.

Tissue specificity

The alpha/alpha homodimer is expressed in embryo and in most adult tissues. The alpha/beta heterodimer and the beta/beta homodimer are found in striated muscle, and the alpha/gamma heterodimer and the gamma/gamma homodimer in neurons.

Pathway

Carbohydrate degradation; glycolysis; pyruvate from D-glyceraldehyde 3-phosphate: step 4/5.

Sequence similarities

Belongs to the enolase family.

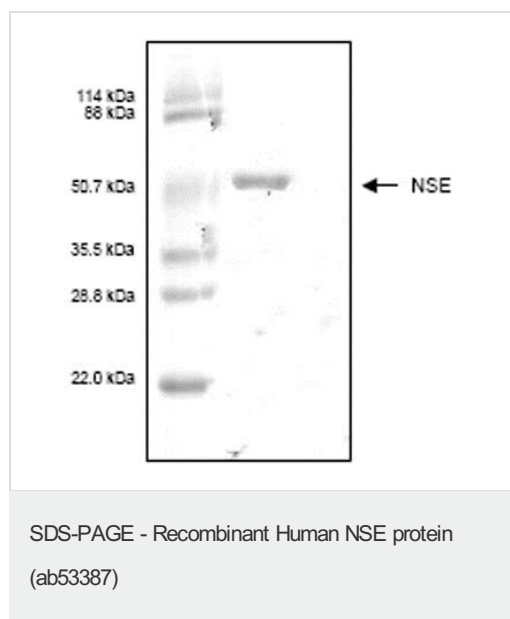
Developmental stage

During ontogenesis, there is a transition from the alpha/alpha homodimer to the alpha/beta heterodimer in striated muscle cells, and to the alpha/gamma heterodimer in nerve cells.

Cellular localization

Cytoplasm. Cell membrane. Can translocate to the plasma membrane in either the homodimeric (alpha/alpha) or heterodimeric (alpha/gamma) form.

Images



SDS page analysis of ab53387.

Please note: All products are "FOR RESEARCH USE ONLY. NOT FOR USE IN DIAGNOSTIC PROCEDURES"

Our Abpromise to you: Quality guaranteed and expert technical support

- Replacement or refund for products not performing as stated on the datasheet
- Valid for 12 months from date of delivery
- Response to your inquiry within 24 hours

- We provide support in Chinese, English, French, German, Japanese and Spanish
- Extensive multi-media technical resources to help you
- We investigate all quality concerns to ensure our products perform to the highest standards

If the product does not perform as described on this datasheet, we will offer a refund or replacement. For full details of the Abpromise, please visit <https://www.abcam.com/abpromise> or contact our technical team.

Terms and conditions

- Guarantee only valid for products bought direct from Abcam or one of our authorized distributors