

## Product datasheet

# Recombinant Human NSE protein ab78797

2 Images

### Overview

<b>Product name</b>	Recombinant Human NSE protein
<b>Protein length</b>	Full length protein

### Description

<b>Nature</b>	Recombinant
<b>Source</b>	Escherichia coli
<b>Amino Acid Sequence</b>	
<b>Species</b>	Human

<b>Sequence</b>	<p>MSIEKIWARE ILDSRGNPTV EVDLYTAKGL          FRAAVPSGAS TGIYEALRLR DGDKQRYLGK          GVLKAVDHIN STIAPALISS GLSVVEQEKL          DNLMLELDGT ENKSKFGANA ILGVSLAVCK          AGAAERELPL YRHIAQLAGN SDLILPVPAF          NVINGGSHAG NKLAMQEFMI LPVGAESFRD          AMRLGAEVYH TLKGVIKDKY GKDATNVGDE          GGFAPNILEN SEALELVKEA IDKAGYTEKI          VIGMDVAASE FYRDGKYDLD FKSPDPSRY          ITGDQLGALY QDFVRDYPVV SIEDPFDQDD          WAAWSKFTAN VGIQIVGDDL TVTNPKRIER          AVEEKACNCL LLKVNQIGSV TEAIQACKLA          QENGWGVMVS HRSGETEDTF IADLVVGLCT          GQIKTGAPCR SERLAKYNQL MRIEEELGDE          ARFAGHNFRN PSVL</p>
-----------------	---

### Specifications

Our [Abpromise guarantee](#) covers the use of **ab78797** in the following tested applications.

The application notes include recommended starting dilutions; optimal dilutions/concentrations should be determined by the end user.

<b>Applications</b>	Western blot SDS-PAGE
<b>Endotoxin level</b>	< 1.000 Eu/μg
<b>Purity</b>	> 95 % SDS-PAGE.

Purity is > 98% by SDS PAGE. ab78797 is purified using conventional chromatography techniques.

**Form** Liquid

## Preparation and Storage

**Stability and Storage** Shipped at 4°C. Upon delivery aliquot and store at -20°C. Avoid freeze / thaw cycles.  
pH: 7.50  
Constituents: 0.75% Potassium chloride, 0.242% Tris, 0.06% Magnesium sulphate

## General Info

**Function** Has neurotrophic and neuroprotective properties on a broad spectrum of central nervous system (CNS) neurons. Binds, in a calcium-dependent manner, to cultured neocortical neurons and promotes cell survival.

**Tissue specificity** The alpha/alpha homodimer is expressed in embryo and in most adult tissues. The alpha/beta heterodimer and the beta/beta homodimer are found in striated muscle, and the alpha/gamma heterodimer and the gamma/gamma homodimer in neurons.

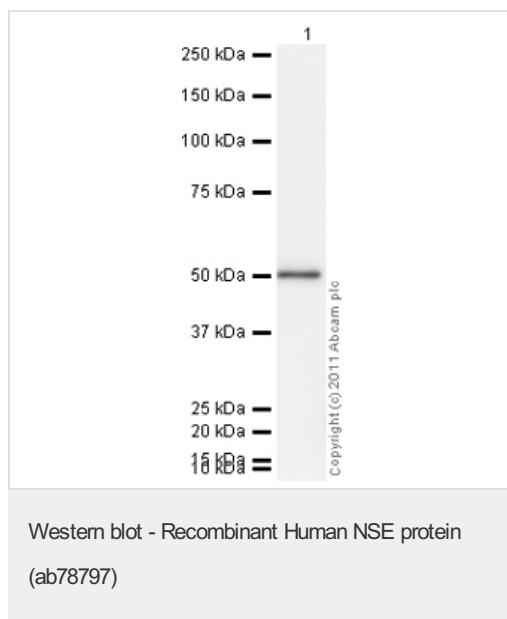
**Pathway** Carbohydrate degradation; glycolysis; pyruvate from D-glyceraldehyde 3-phosphate: step 4/5.

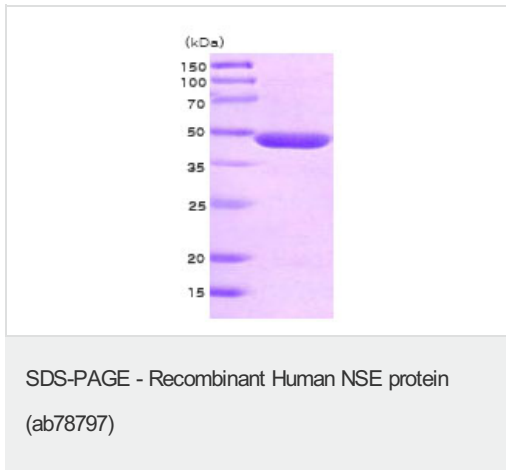
**Sequence similarities** Belongs to the enolase family.

**Developmental stage** During ontogenesis, there is a transition from the alpha/alpha homodimer to the alpha/beta heterodimer in striated muscle cells, and to the alpha/gamma heterodimer in nerve cells.

**Cellular localization** Cytoplasm. Cell membrane. Can translocate to the plasma membrane in either the homodimeric (alpha/alpha) or heterodimeric (alpha/gamma) form.

## Images





15% SDS-PAGE showing ab78797 at approximately 47kDa (3µg).

**Please note:** All products are "FOR RESEARCH USE ONLY. NOT FOR USE IN DIAGNOSTIC PROCEDURES"

### Our Abpromise to you: Quality guaranteed and expert technical support

---

- Replacement or refund for products not performing as stated on the datasheet
- Valid for 12 months from date of delivery
- Response to your inquiry within 24 hours
- We provide support in Chinese, English, French, German, Japanese and Spanish
- Extensive multi-media technical resources to help you
- We investigate all quality concerns to ensure our products perform to the highest standards

If the product does not perform as described on this datasheet, we will offer a refund or replacement. For full details of the Abpromise, please visit <https://www.abcam.com/abpromise> or contact our technical team.

### Terms and conditions

---

- Guarantee only valid for products bought direct from Abcam or one of our authorized distributors