

Product datasheet

Recombinant Human NSMCE1 protein ab167918

1 Image

Overview

Product name	Recombinant Human NSMCE1 protein
Protein length	Full length protein

Description

Nature	Recombinant
Source	Escherichia coli
Amino Acid Sequence	
Accession	Q8WV22
Species	Human

Sequence	<p>MGSSHHHHHH SSGLVPRGSH MGSMQGSTRR MGVMTDVHRR FLQLLMTHGV LEEWDVKRLQ THCYKVHDRN ATVDKLEDFI NNINSVLESL YIEIKRGVTE DDGRPIYALV NLATTSISKM ATDFAENELD LFRKALELII DSETGFASST NILNLVDQLK GKKMRKKEAE QVLQKFVQNK WLIEKEGEFT LHGRAILEME QYIREYTPDA VKICNICHSL LIQGQSCETC GIRMHLPCVA KYFQSNAEPR CPHCNDYWPH EIPKVFDPK ERESGVLKSN KKSLRSRQH</p>
-----------------	--

Molecular weight	33 kDa including tags
Amino acids	1 to 266
Tags	His tag N-Terminus

Specifications

Our [Abpromise guarantee](#) covers the use of **ab167918** in the following tested applications.

The application notes include recommended starting dilutions; optimal dilutions/concentrations should be determined by the end user.

Applications	Mass Spectrometry SDS-PAGE
Mass spectrometry	MALDI-TOF
Purity	>95% by SDS-PAGE .

Form Liquid

Preparation and Storage

Stability and Storage Shipped at 4°C. Store at +4°C short term (1-2 weeks). Upon delivery aliquot. Store at -20°C or -80°C. Avoid freeze / thaw cycle.

pH: 8.00

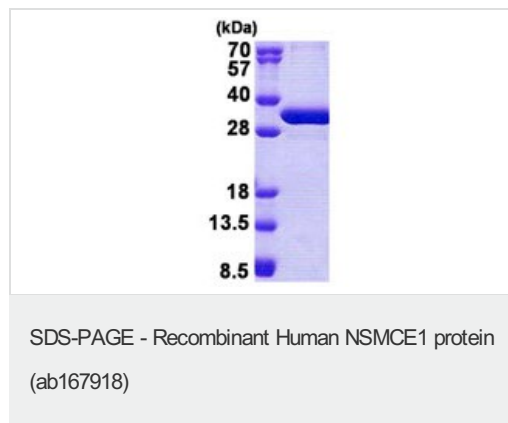
Constituents: 0.02% DTT, 0.32% Tris HCl, 20% Glycerol, 0.88% Sodium chloride

General Info

Relevance NSMCE1 is a probable component of the SMC5-SMC6 complex, a complex involved in DNA double strand breaks by homologous recombination. The complex may promote sister chromatid homologous recombination by recruiting the SMC1-SMC3 cohesin complex to double strand breaks.

Cellular localization Nucleus. Chromosome, telomere

Images



3 µg ab167918 on 15% SDS-PAGE

Please note: All products are "FOR RESEARCH USE ONLY AND ARE NOT INTENDED FOR DIAGNOSTIC OR THERAPEUTIC USE"

Our Abpromise to you: Quality guaranteed and expert technical support

- Replacement or refund for products not performing as stated on the datasheet
- Valid for 12 months from date of delivery
- Response to your inquiry within 24 hours
- We provide support in Chinese, English, French, German, Japanese and Spanish
- Extensive multi-media technical resources to help you
- We investigate all quality concerns to ensure our products perform to the highest standards

If the product does not perform as described on this datasheet, we will offer a refund or replacement. For full details of the Abpromise, please visit <https://www.abcam.com/abpromise> or contact our technical team.

Terms and conditions

- Guarantee only valid for products bought direct from Abcam or one of our authorized distributors