

Product datasheet

Recombinant Human OBSCN protein ab164481

1 Image

Overview

<b>Product name</b>	Recombinant Human OBSCN protein
<b>Protein length</b>	Protein fragment

Description

<b>Nature</b>	Recombinant
<b>Source</b>	Wheat germ
<b>Amino Acid Sequence</b>	
<b>Species</b>	Human
<b>Sequence</b>	KAGMGPYSSPSEQVLLGGPSHLASEEESQGRSAQPL PSTKTFAFQTQQR GRFSVVRQCWEKASGRALAALKIIPYHPKDKTAVLREYE ALKGLRHPHLA
<b>Amino acids</b>	1551 to 1649
<b>Tags</b>	proprietary tag N-Terminus

Specifications

Our [Abpromise guarantee](#) covers the use of **ab164481** in the following tested applications.

The application notes include recommended starting dilutions; optimal dilutions/concentrations should be determined by the end user.

<b>Applications</b>	ELISA Western blot
<b>Form</b>	Liquid
<b>Additional notes</b>	Protein concentration is above or equal to 0.05 mg/ml.

Preparation and Storage

<b>Stability and Storage</b>	Shipped on dry ice. Upon delivery aliquot and store at -80°C. Avoid freeze / thaw cycles. pH: 8.00 Constituents: 0.31% Glutathione, 0.79% Tris HCl
------------------------------	--

## General Info

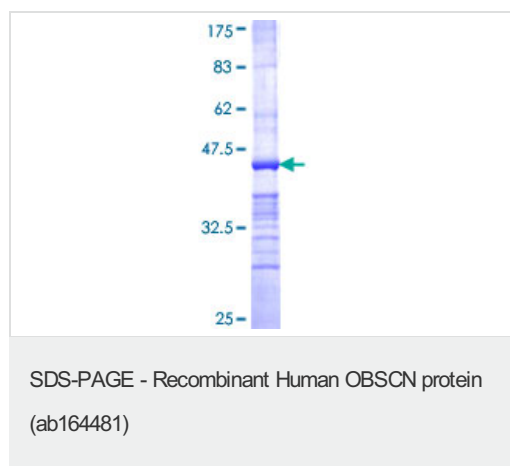
---

<b>Function</b>	Involved in myofibrillogenesis. Seems to be involved in assembly of myosin into sarcomeric A bands in striated muscle. Isoform 3 together with ANK1 isoform Mu17/Ank1.5 may provide a molecular link between the sarcoplasmic reticulum and myofibrils.
<b>Sequence similarities</b>	Belongs to the protein kinase superfamily. CAMK Ser/Thr protein kinase family. Contains 1 DH (DBL-homology) domain. Contains 3 fibronectin type-III domains. Contains 55 Ig-like (immunoglobulin-like) domains. Contains 1 IQ domain. Contains 2 PH domains. Contains 2 protein kinase domains. Contains 1 SH3 domain.
<b>Cellular localization</b>	Cytoplasm > myofibril > sarcomere > M line. Cytoplasm > myofibril > sarcomere > Z line. In differentiating skeletal muscle cells, isoform 3 primarily localizes to the sarcomeric M-line and less frequently to the Z-disk. Isoform 3 colocalizes with ANK1 isoform Mu17/ank1.5 at the M-line in differentiated skeletal muscle cells.

---

## Images

---



ab164481 on a 12.5% SDS-PAGE stained with Coomassie Blue.

**Please note:** All products are "FOR RESEARCH USE ONLY AND ARE NOT INTENDED FOR DIAGNOSTIC OR THERAPEUTIC USE"

## Our Abpromise to you: Quality guaranteed and expert technical support

---

- Replacement or refund for products not performing as stated on the datasheet
- Valid for 12 months from date of delivery
- Response to your inquiry within 24 hours
- We provide support in Chinese, English, French, German, Japanese and Spanish
- Extensive multi-media technical resources to help you
- We investigate all quality concerns to ensure our products perform to the highest standards

If the product does not perform as described on this datasheet, we will offer a refund or replacement. For full details of the Abpromise, please visit <https://www.abcam.com/abpromise> or contact our technical team.

## Terms and conditions

---

- Guarantee only valid for products bought direct from Abcam or one of our authorized distributors