

Product datasheet

Recombinant Human OPHN1 protein ab159026

1 Image

Overview

Product name	Recombinant Human OPHN1 protein
Protein length	Full length protein

Description

Nature	Recombinant
Source	Wheat germ
Amino Acid Sequence	
Species	Human

Sequence	<p>MGHPPLEFSDCYLDSPDFRERLKCYEQELERTNKF DVIKDGNALISAM RNYSSAVQKFSQTLQSFQDFIGDRTLDDDEINIAESFKE FAELLNEVENE RMMMVHNASDLLIKPLENFRKEQIGFTKERKKKFEKD GERFYSLLDRHLH LSSKKKESQLQEADLQVDKERHNFESSLDVYVYQIQE VQESKKFNMEPV LAFLHSLFISNSLTVELTQDFLPYKQQLQLSLQNTRNH SSTREEMEELK KRMKEAPQTCKLPGQPTIEGYLYTQEKWALGISWVKYY CQYEKETKLTLM TPMEQKPGAKQGPLDLTLKYCVRRKTESIDKRFCFDIE TNERPGTITLQA LSEANRRLWMEAMDGKEPYHSPITKQEMELNEVGF KFVRKCINIETK GIKTEGLYRTVGSNIQVQKLLNAFFDPKCPGDVDFHNS DWDIKTITSSLK FYLRNLSEPVMTYRLHKELVSAAKSDNLDYRLGAIHSL VYKLPEKNREML ELLIRHLVNVCEHSKENLMTSPSNMGVIFGPTLMRAQED TVAAMMNIKFQN MVEILIEHFGKMLGPPEESAAPPVPPPRVTARRHKPITI SKRLLRERT VFYTSSLDESEDEIQHQTPNGTITSSIEPPKPPQHPKLP QRSGETDPGR</p>
-----------------	--

KSPSRPILDGKLEPCPEVDVGKLVSRQLDGGTKITPKA
TNGPMPGSGPTK
TPSFHIKRPAPRPLAHHKEGDADSFVSKVRPPGEKPTII
RPPVRPPDPPCR
AATPQKPEPKPDMVAGNAGEITSSVVASRTRFFETASR
KTGSSQGRLPGD ES

Amino acids 1 to 802
Tags proprietary tag N-Terminus

Specifications

Our [Abpromise guarantee](#) covers the use of **ab159026** in the following tested applications.

The application notes include recommended starting dilutions; optimal dilutions/concentrations should be determined by the end user.

Applications ELISA
Western blot

Form Liquid

Additional notes Protein concentration is above or equal to 0.05 mg/ml.

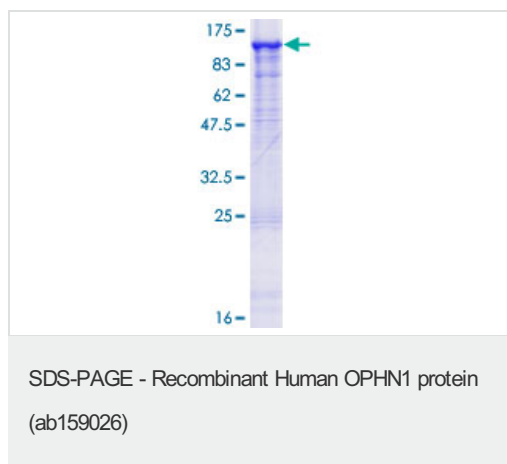
Preparation and Storage

Stability and Storage Shipped on dry ice. Upon delivery aliquot and store at -80°C. Avoid freeze / thaw cycles.
pH: 8.00
Constituents: 0.31% Glutathione, 0.79% Tris HCl

General Info

Relevance Stimulates GTP hydrolysis of members of the Rho family. Could activates GTPase targets that are known to affect cell migration and outgrowth of axons and dendrites.

Images



ab159026 on a 12.5% SDS-PAGE stained with Coomassie Blue.

Please note: All products are "FOR RESEARCH USE ONLY AND ARE NOT INTENDED FOR DIAGNOSTIC OR THERAPEUTIC USE"

Our Abpromise to you: Quality guaranteed and expert technical support

- Replacement or refund for products not performing as stated on the datasheet
- Valid for 12 months from date of delivery
- Response to your inquiry within 24 hours

- We provide support in Chinese, English, French, German, Japanese and Spanish
- Extensive multi-media technical resources to help you
- We investigate all quality concerns to ensure our products perform to the highest standards

If the product does not perform as described on this datasheet, we will offer a refund or replacement. For full details of the Abpromise, please visit <https://www.abcam.com/abpromise> or contact our technical team.

Terms and conditions

- Guarantee only valid for products bought direct from Abcam or one of our authorized distributors