

Product datasheet

Recombinant Human ORC3L protein ab132265

1 Image

Description

<b>Product name</b>	Recombinant Human ORC3L protein
<b>Expression system</b>	Wheat germ
<b>Accession</b>	<a href="#">Q9UBD5-2</a>
<b>Protein length</b>	Full length protein
<b>Animal free</b>	No
<b>Nature</b>	Recombinant
<b>Species</b>	Human

Sequence

MATSSMSKGCVFVKPNSKKRKISLPIEDYFNKGKNEP  
EDSKLRFETYQLI  
WQQMKSENERLQEELNKNLFDNLIEFLQKSHSGFQKN  
SRDLGGQIKLREI  
PTAALVLGVNVTDHDLTFGSLTEALQNNVTPYVVS LQA  
KDCPDMKHFLQK  
LISQLMDCCVDIKSKEEESVHVTQRKTHYSMDSLSSW  
YMTVTQKTDPKML  
SKKRTTSSQWQSPPVVILKDMESFATKVLQDFIISSQ  
HLHEFPLILIF  
GIATSPIIHRLPHAVSLLCIELFQSLSCKEHLTTVLDK  
LLTTQFPF  
KINEKVLQVLTNIFLYHDFSVQNFIKGLQLSLEHFYSQP  
LSVLCCNLPE  
AKRRINFLSNNQCENIRRLPSFRRYVEKQASEKQVALL  
TNERYLKEETQL  
LLENLHVYHMNYFLVLRCLHKFTSSLPKYPLGRQIRELY  
CTCLEKNWDS  
EEYASVLQLLRMLAKDELMTILEKCFKVFKSYCENHLG  
STAKRIEEFLAQ  
FQSLDAETKEEEDASGSQPKGLQKTDLYHLQKSLLEM  
KELRRSKKQTKFE  
VLRENVVNFIDCLVREYLLPPETQPLHEVVYFSAAHAL  
REHLNAAPRIAL  
HTALNNPYYYYLKNEALKSEEGCIPNIAPDICIAYKLHLEC  
SRLINLVDWS  
EAFATVVTAEEKMDANSATSEEMNEIHHARFIRAVSELE  
LLGFIKPTKQK TDHVARL TWGGC

<b>Predicted molecular weight</b>	109 kDa including tags
<b>Amino acids</b>	1 to 712

## Specifications

---

Our [Abpromise guarantee](#) covers the use of **ab132265** in the following tested applications.

The application notes include recommended starting dilutions; optimal dilutions/concentrations should be determined by the end user.

<b>Applications</b>	Western blot
	SDS-PAGE
	ELISA

<b>Form</b>	Liquid
-------------	--------

## Additional notes

## Preparation and Storage

---

<b>Stability and Storage</b>	Shipped on dry ice. Upon delivery aliquot and store at -80°C. Avoid freeze / thaw cycles. pH: 8.00 Constituents: 0.31% Glutathione, 0.79% Tris HCl
------------------------------	--

## General Info

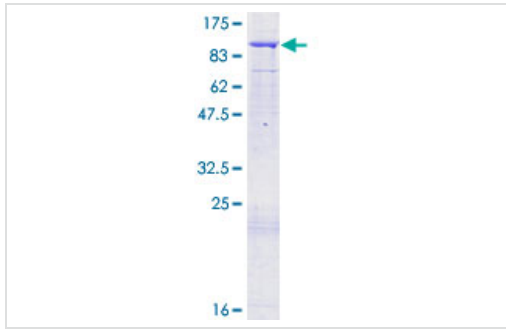
---

<b>Function</b>	Component of the origin recognition complex (ORC) that binds origins of replication. DNA-binding is ATP-dependent, however specific DNA sequences that define origins of replication have not been identified so far. ORC is required to assemble the pre-replication complex necessary to initiate DNA replication.
<b>Sequence similarities</b>	Belongs to the ORC3 family.
<b>Post-translational modifications</b>	Phosphorylated upon DNA damage, probably by ATM or ATR. Phosphorylated upon DNA damage, probably by ATM or ATR.
<b>Cellular localization</b>	Nucleus.

---

## Images

---



12.5% SDS-PAGE analysis of ab132265 stained with Coomassie Blue.

SDS-PAGE - Recombinant Human ORC3L protein (ab132265)

**Please note:** All products are "FOR RESEARCH USE ONLY. NOT FOR USE IN DIAGNOSTIC PROCEDURES"

### Our Abpromise to you: Quality guaranteed and expert technical support

---

- Replacement or refund for products not performing as stated on the datasheet
- Valid for 12 months from date of delivery
- Response to your inquiry within 24 hours
- We provide support in Chinese, English, French, German, Japanese and Spanish
- Extensive multi-media technical resources to help you
- We investigate all quality concerns to ensure our products perform to the highest standards

If the product does not perform as described on this datasheet, we will offer a refund or replacement. For full details of the Abpromise, please visit <https://www.abcam.com/abpromise> or contact our technical team.

### Terms and conditions

---

- Guarantee only valid for products bought direct from Abcam or one of our authorized distributors