

Product datasheet

Recombinant Human p115-RhoGEF protein ab132603

1 Image

Description

<b>Product name</b>	Recombinant Human p115-RhoGEF protein
<b>Expression system</b>	Wheat germ
<b>Accession</b>	<a href="#">Q92888</a>
<b>Protein length</b>	Full length protein
<b>Animal free</b>	No
<b>Nature</b>	Recombinant
<b>Species</b>	Human
<b>Sequence</b>	<p>MEDFARGAASPGPSRPLVPSIIGAEDEDFENELET  NSEEQNSQFQSLE  QVKRRPAHLMALLQHVALQFEPGPLLCCLHADMLGSL  GPKEAKKAFLDFY  HSFLEKTAVLRVPVPPNVAFELDRTRADLISEDVQRRF  VQEVVQSQQVAV  GRQLEDFRSKRLMGMPWEQELAQLAWEVGRDRAS  YEARERHVAERLLMH  LEEMQHTISTDEEKSAVVNAIGLYMRHLGVRTKSGDK  KSGRNFFRKKVM  GNRRSDEPAKTKKGLSSILDAARWNRGEPQVPDFRH  LKAEVDAEKPGATD  RKGGVGMPSRDRNIGAPGQDTPGVSLHPLSLDSPDR  EPGADAPLELGDSS  PQGPMLES LAPPESTDEGAETESPEPGDEGEPGRS  GLELEPEEPPGWRE  LVPPDTLHSLPKSQVKRQEVISELLVTEAAHVRMLRVL  HDLFFQMAECL  FFPLEELQNIFFSLDELIEVHSLFLDRLMKRRQESGYLI  EEIGDVLLARF  DGAEGSWFQISSRFCSRQSFALQLKAKQRKDPFRF  CAFVQEAESRPRCR  RLQLKDMIPTMQRLTKYPLLLQSIGQNTTEPTEREKV  ELAAECCREILH  HVNQAVRDMEDLLRLKDYQRRDLDSLRLRQSSDPMLS  EFKNLDITKKLVH  EGPLTWRVTKDKAVEVHVVLLDDLLLLLQRQDERLLL  KSHSRTLTPPDG</p>

KTMLRPVLRRLTSAMTREVATDHKAFYVLFVTDQEAQIY  
ELVAQTVSERKN  
WCALITETAGSLKVPAPASRPKPRPSPSSTREPLLS  
SENGNGGRETSPA  
DARTERILSDLLPFCRPGPEGQLAATALRKVLSLKQLL  
FPAEEDNGAGPP  
RDGDGVPGGGPLSPARTQEIQENLLSLEETMKQLEEL  
EEEFCLRPLLSQLGGNSVPQPGCT

**Predicted molecular weight** 129 kDa including tags

**Amino acids** 1 to 912

## Specifications

---

Our [Abpromise guarantee](#) covers the use of **ab132603** in the following tested applications.

The application notes include recommended starting dilutions; optimal dilutions/concentrations should be determined by the end user.

**Applications** ELISA  
SDS-PAGE  
Western blot

**Form** Liquid

**Additional notes** This product was previously labelled as ARHGEF1.

## Preparation and Storage

---

**Stability and Storage** Shipped on dry ice. Upon delivery aliquot and store at -80°C. Avoid freeze / thaw cycles.

pH: 8.00

Constituents: 0.31% Glutathione, 0.79% Tris HCl

## General Info

---

**Function** Seems to play a role in the regulation of RhoA GTPase by guanine nucleotide-binding alpha-12 (GNA12) and alpha-13 (GNA13) subunits. Acts as GTPase-activating protein (GAP) for GNA12 and GNA13, and as guanine nucleotide exchange factor (GEF) for RhoA GTPase. Activated G alpha 13/GNA13 stimulates the RhoGEF activity through interaction with the RGS-like domain. This GEF activity is inhibited by binding to activated GNA12. Mediates angiotensin-2-induced RhoA activation.

**Tissue specificity** Ubiquitously expressed.

**Sequence similarities** Contains 1 DH (DBL-homology) domain.

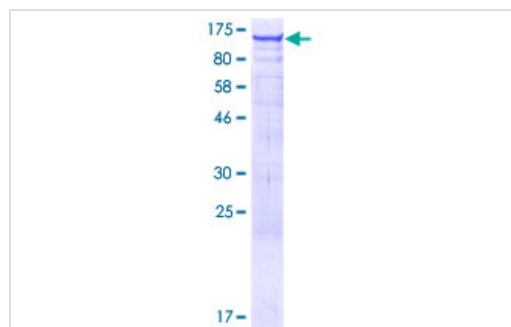
Contains 1 PH domain.

Contains 1 RGSL (RGS-like) domain.

**Domain** The RGSL domain, also known as rgRGS domain, is necessary but not sufficient for GAP activity. The DH domain is involved in interaction with CCPG1.

**Post-translational modifications** Phosphorylated by PKCA. Angiotensin-2 induced Tyr-738 phosphorylation is mediated by JAK2.

## Images



12.5% SDS-PAGE analysis of ab132603 stained with Coomassie Blue.

SDS-PAGE - Recombinant Human p115-RhoGEF protein (ab132603)

**Please note:** All products are "FOR RESEARCH USE ONLY. NOT FOR USE IN DIAGNOSTIC PROCEDURES"

## Our Abpromise to you: Quality guaranteed and expert technical support

- Replacement or refund for products not performing as stated on the datasheet
- Valid for 12 months from date of delivery
- Response to your inquiry within 24 hours
- We provide support in Chinese, English, French, German, Japanese and Spanish
- Extensive multi-media technical resources to help you
- We investigate all quality concerns to ensure our products perform to the highest standards

If the product does not perform as described on this datasheet, we will offer a refund or replacement. For full details of the Abpromise, please visit <https://www.abcam.com/abpromise> or contact our technical team.

## Terms and conditions

- Guarantee only valid for products bought direct from Abcam or one of our authorized distributors