

## Product datasheet

# Recombinant Human PABPC1L2A protein ab166282

1 Image

### Description

<b>Product name</b>	Recombinant Human PABPC1L2A protein	
<b>Expression system</b>	Wheat germ	
<b>Protein length</b>	Full length protein	
<b>Animal free</b>	No	
<b>Nature</b>	Recombinant	
<b>Species</b>	Human	
<b>Sequence</b>	MASLYVGDHLHPEVTEAMLYEKFSPAGPILSIRICRDKITR RSLGYAYVNY QQPVDAKRALETLNFDVIKGRPVRIMWSQRDPSLRKS GVGNVFIKNLGKT IDNKALYNIFSAFGNILSCKVACDEKGPKGYGFVHFQK QESAERAIDVMN GMFLNYRKIFVGRFKSHKEREARGAWARQSTSADV KDFEEDTDEEATLR	
<b>Amino acids</b>	1 to 200	
<b>Tags</b>	GST tag N-Terminus	

### Specifications

Our [Abpromise guarantee](#) covers the use of **ab166282** in the following tested applications.

The application notes include recommended starting dilutions; optimal dilutions/concentrations should be determined by the end user.

<b>Applications</b>	ELISA
	Western blot
<b>Form</b>	Liquid
<b>Additional notes</b>	Protein concentration is above or equal to 0.05 mg/ml.

### Preparation and Storage

<b>Stability and Storage</b>	Shipped on dry ice. Upon delivery aliquot and store at -80°C. Avoid freeze / thaw cycles.
	pH: 8.00
	Constituents: 0.31% Glutathione, 0.79% Tris HCl

## General Info

---

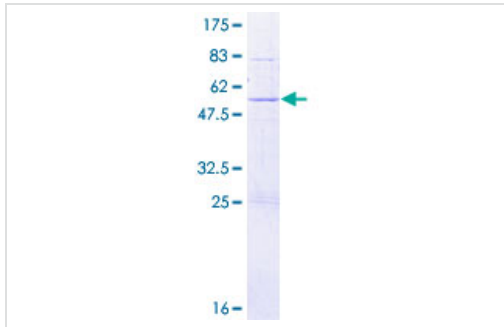
### Sequence similarities

Contains 2 RRM (RNA recognition motif) domains.

---

## Images

---



ab166282 on a 12.5% SDS-PAGE stained with Coomassie Blue.

SDS-PAGE - Recombinant Human PABPC1L2A  
protein (ab166282)

**Please note:** All products are "FOR RESEARCH USE ONLY. NOT FOR USE IN DIAGNOSTIC PROCEDURES"

## Our Abpromise to you: Quality guaranteed and expert technical support

---

- Replacement or refund for products not performing as stated on the datasheet
- Valid for 12 months from date of delivery
- Response to your inquiry within 24 hours
- We provide support in Chinese, English, French, German, Japanese and Spanish
- Extensive multi-media technical resources to help you
- We investigate all quality concerns to ensure our products perform to the highest standards

If the product does not perform as described on this datasheet, we will offer a refund or replacement. For full details of the Abpromise, please visit <https://www.abcam.com/abpromise> or contact our technical team.

## Terms and conditions

---

- Guarantee only valid for products bought direct from Abcam or one of our authorized distributors