

Product datasheet

Recombinant Human PACRG protein ab165390

1 Image

Overview

Product name	Recombinant Human PACRG protein
Protein length	Protein fragment

Description

Nature	Recombinant
Source	Wheat germ
Amino Acid Sequence	
Species	Human
Sequence	MVAEKETLSLNKCPDKMPKRTKLLAQQLP VHQP HSL VSEGFTVKAMMKN SVVRGPPAAGAFKERPTKPTAFRKFYERGFPIALEH DSKGNRIAWKVEI EKLDYHHYLP
Amino acids	1 to 110
Tags	proprietary tag N-Terminus

Specifications

Our [Abpromise guarantee](#) covers the use of **ab165390** in the following tested applications.

The application notes include recommended starting dilutions; optimal dilutions/concentrations should be determined by the end user.

Applications	ELISA Western blot
Form	Liquid
Additional notes	Protein concentration is above or equal to 0.05 mg/ml.

Preparation and Storage

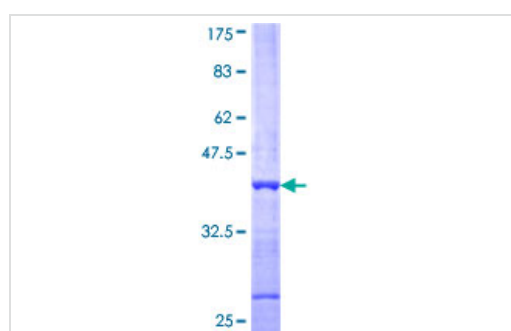
Stability and Storage	Shipped on dry ice. Upon delivery aliquot and store at -80°C. Avoid freeze / thaw cycles. pH: 8.00 Constituents: 0.31% Glutathione, 0.79% Tris HCl
------------------------------	--

General Info

Function Suppresses cell death induced by accumulation of unfolded Pael receptor (Pael-R, a substrate of Parkin). Facilitates the formation of inclusions consisting of Pael-R, molecular chaperones, protein degradation molecules and itself when proteasome is inhibited. May play an important role in the formation of Lewy bodies and protection of dopaminergic neurons against Parkinson disease.

Tissue specificity Expressed in all immune tissues, spleen, lymph nodes, thymus, tonsils, leukocyte and bone marrow. Expressed also in heart, brain, skeletal muscle, kidney, lung and pancreas. Expressed in primary Schwann cells and very weakly by monocyte-derived macrophages the primary host cells of *Mycobacterium leprae*, the causative agent of leprosy. Component of Lewy bodies, intraneuronal inclusions found in the brain of Parkinson disease patients.

Images



ab165390 on a 12.5% SDS-PAGE stained with Coomassie Blue.

SDS-PAGE - Recombinant Human PACRG protein
(ab165390)

Please note: All products are "FOR RESEARCH USE ONLY AND ARE NOT INTENDED FOR DIAGNOSTIC OR THERAPEUTIC USE"

Our Abpromise to you: Quality guaranteed and expert technical support

- Replacement or refund for products not performing as stated on the datasheet
- Valid for 12 months from date of delivery
- Response to your inquiry within 24 hours
- We provide support in Chinese, English, French, German, Japanese and Spanish
- Extensive multi-media technical resources to help you
- We investigate all quality concerns to ensure our products perform to the highest standards

If the product does not perform as described on this datasheet, we will offer a refund or replacement. For full details of the Abpromise, please visit <https://www.abcam.com/abpromise> or contact our technical team.

Terms and conditions

- Guarantee only valid for products bought direct from Abcam or one of our authorized distributors