

Product datasheet

Recombinant Human PAEP/Glycodelin protein  
ab114684

1 Image

Description

|                                   |  |  |
|-----------------------------------|--|--|
| <b>Product name</b>               | Recombinant Human PAEP/Glycodelin protein  |  |
| <b>Expression system</b>          | Wheat germ   |  |
| <b>Accession</b>                  | <a href="#">P09466</a>   |  |
| <b>Protein length</b>             | Full length protein  |  |
| <b>Animal free</b>                | No   |  |
| <b>Nature</b>                     | Recombinant  |  |
| <b>Species</b>                    | Human  |  |
| <b>Sequence</b>                   | MLCLLLTGVALVCGVPAMDIPQTKQDLELPKLAGTW<br>HSMAMATNNISLM<br>ATLKAPLRVHITSLLPTPEDNLEMLHRWENNSCVEKK<br>VLGEKTENPKKF<br>KINYTVANEATLLD TDYDNFLFLCLQDTTPIQSMQCQY<br>LARVLVEDDEI<br>MQGFIRAFRPLPRHLWYLLDLKQMEEPCRF |  |
| <b>Predicted molecular weight</b> | 46 kDa including tags  |  |
| <b>Amino acids</b>                | 1 to 180   |  |

Specifications

Our [Abpromise guarantee](#) covers the use of **ab114684** in the following tested applications.

The application notes include recommended starting dilutions; optimal dilutions/concentrations should be determined by the end user.

|                         |  |
|-------------------------|--|
| <b>Applications</b>     | Western blot<br>SDS-PAGE<br>ELISA  |
| <b>Form</b>             | Liquid   |
| <b>Additional notes</b> | Protein concentration is above or equal to 0.05 mg/ml.<br>Best used within three months from the date of receipt.<br>Previously labelled as Placental Protein 14 / Glycodelin A. |

Preparation and Storage

## Preparation and Storage

---

### Stability and Storage

Shipped on dry ice. Upon delivery aliquot and store at -80°C. Avoid freeze / thaw cycles.

pH: 8.00

Constituents: 0.3% Glutathione, 0.79% Tris HCl

## General Info

---

### Function

This protein is, quantitatively, the main protein synthesized and secreted in the endometrium from mid-luteal phase of the menstrual cycle and during the first semester of pregnancy.

### Sequence similarities

Belongs to the calycin superfamily. Lipocalin family.

### Post-translational modifications

At least two differentially glycosylated forms are found. Glycodelin-A (GdA) (amniotic fluid) with contraceptive and immunosuppressive activities and glycodelin-S (Gds) (seminal plasma) whose role is not yet known. The gender-specific glycosylation may serve to regulate key process involved in human reproduction.

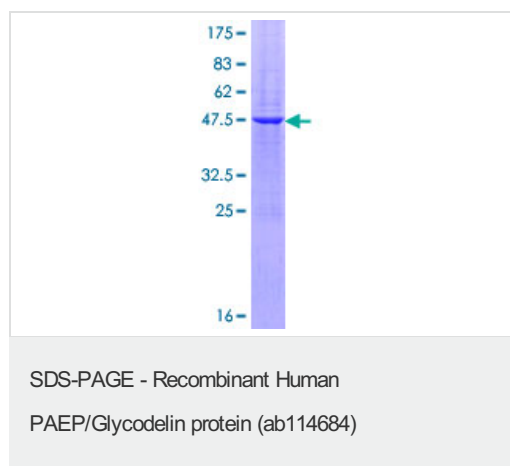
### Cellular localization

Secreted.

---

## Images

---



ab114684 analysed on a 12.5% SDS-PAGE gel stained with Coomassie Blue.

**Please note:** All products are "FOR RESEARCH USE ONLY. NOT FOR USE IN DIAGNOSTIC PROCEDURES"

## Our Abpromise to you: Quality guaranteed and expert technical support

---

- Replacement or refund for products not performing as stated on the datasheet
- Valid for 12 months from date of delivery
- Response to your inquiry within 24 hours
- We provide support in Chinese, English, French, German, Japanese and Spanish
- Extensive multi-media technical resources to help you
- We investigate all quality concerns to ensure our products perform to the highest standards

If the product does not perform as described on this datasheet, we will offer a refund or replacement. For full details of the Abpromise, please visit <https://www.abcam.com/abpromise> or contact our technical team.

## Terms and conditions

---

- Guarantee only valid for products bought direct from Abcam or one of our authorized distributors