

Product datasheet

Recombinant Human PBK/SPK protein ab123196

1 References 1 Image

Description

<b>Product name</b>	Recombinant Human PBK/SPK protein
<b>Purity</b>	> 95 % SDS-PAGE. ab123196 is purified using conventional chromatography techniques.
<b>Expression system</b>	Escherichia coli
<b>Accession</b>	<a href="#">Q96KB5</a>
<b>Protein length</b>	Full length protein
<b>Animal free</b>	No
<b>Nature</b>	Recombinant
<b>Species</b>	Human
<b>Sequence</b>	<pre> MGSSHHHHHH SSGLVPRGSH MGSHEMESISN FKTPSKLSEK KKSVCSTPT INIPASPFMQ KLGFGTGVNV YLMKRSPRGL SHSPWAVKKI NPICNDHYRS VYQKRLMDEA KILKSLHHPN IVGYRAFTEA NDGSLCLAME YGGEKSLNDL IEERYKASQD PFPAAIILKV ALNMARGPKY LHQEKLLHG DIKSSNVVVK GDFETIKICD VGVSLPLDEN MTVTDPEACY IGTEPWKPKE AVEENGVIDD KADIFAFGLT LWEMMTLSIP HINLSNDDDD EDKTFDESDF DDEAYYAALG TRPPINMEEL DESYQKVIEL FSVCTNEDPK DRPSAAHIVE ALETDV </pre>
<b>Predicted molecular weight</b>	39 kDa including tags
<b>Amino acids</b>	1 to 322
<b>Tags</b>	His tag N-Terminus

Specifications

Our [Abpromise guarantee](#) covers the use of **ab123196** in the following tested applications.

The application notes include recommended starting dilutions; optimal dilutions/concentrations should be determined by the end user.

<b>Applications</b>	SDS-PAGE Mass Spectrometry
<b>Mass spectrometry</b>	MALDI-TOF
<b>Form</b>	Liquid

## Additional notes

This product was previously labelled as PBK

## Preparation and Storage

### Stability and Storage

Shipped at 4°C. Upon delivery aliquot and store at -20°C or -80°C. Avoid repeated freeze / thaw cycles.

pH: 8

Constituents: 0.02% DTT, 0.32% Tris HCl, 10% Glycerol (glycerin, glycerine), 0.58% Sodium chloride

## General Info

### Function

Phosphorylates MAP kinase p38. Seems to be active only in mitosis. May also play a role in the activation of lymphoid cells. When phosphorylated, forms a complex with TP53, leading to TP53 destabilization and attenuation of G2/M checkpoint during doxorubicin-induced DNA damage.

### Tissue specificity

Expressed in the testis and placenta. In the testis, restrictedly expressed in outer cell layer of seminiferous tubules.

### Sequence similarities

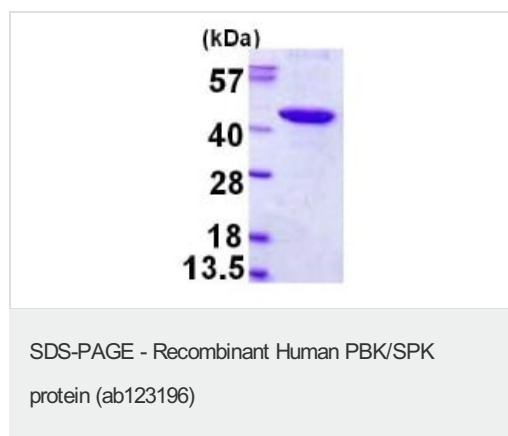
Belongs to the protein kinase superfamily. Ser/Thr protein kinase family. MAP kinase kinase subfamily.

Contains 1 protein kinase domain.

### Post-translational modifications

Phosphorylated; in a cell-cycle dependent manner at mitosis.

## Images



15% SDS-PAGE showing ab123196 (3µg).

(Molecular size on SDS-PAGE will appear higher).

**Please note:** All products are "FOR RESEARCH USE ONLY. NOT FOR USE IN DIAGNOSTIC PROCEDURES"

## Our Abpromise to you: Quality guaranteed and expert technical support

- Replacement or refund for products not performing as stated on the datasheet
- Valid for 12 months from date of delivery

- Response to your inquiry within 24 hours
- We provide support in Chinese, English, French, German, Japanese and Spanish
- Extensive multi-media technical resources to help you
- We investigate all quality concerns to ensure our products perform to the highest standards

If the product does not perform as described on this datasheet, we will offer a refund or replacement. For full details of the Abpromise, please visit <https://www.abcam.com/abpromise> or contact our technical team.

### **Terms and conditions**

---

- Guarantee only valid for products bought direct from Abcam or one of our authorized distributors