

Product datasheet

Recombinant Human PCDHA8 protein ab163337

1 Image

Overview

| | |
|-----------------------|----------------------------------|
| Product name | Recombinant Human PCDHA8 protein |
| Protein length | Full length protein |

Description

| | |
|----------------------------|-------------|
| Nature | Recombinant |
| Source | Wheat germ |
| Amino Acid Sequence | |
| Species | Human |

| | |
|-----------------|--|
| Sequence | <p>MDYHWRGELGSWRLLLLLLLLLAAWKVGSGQLHYSVP EEAKHGTFVGRIAQ DLGLELAELVPRLFRVASKRHRDLLEVSLQNGILFVNS RIDREELCGRSA ECSIHLEVMDRPLQVFHVDVEVKDVNDNPPVFRVKD QKLFVSESRMPDS RFPLEGASDADVGANSVLTYRLSSHDFMLDVNSKND ENKLVELVLRKSL DREDAPAHHLFLTATDGGKPELTGTVQLLVTVLDVND NAPTFEQSEYEV IFENADNGTTVIKLNASDPDEGANGAISYFNSLVETMV IDHFSIDRNTG EIVIRGNLDFEQENLYKILIDATDKGHPPMAGHCTVLVRI LDKNDNVPEI ALTSLSLPVREDAQFGTVIALISVNDLDSGANGQVTCS LMPHVPFKLVST FKNYSLVLDSALDRERVSAYELVVTARDGGSPSLWA TASLSVEVADVND NAPAFAPQPEYTVFKENPPGCHIFTVSARDADAQEN ALVSYSLVERRVG ERSLSYSVHTESGKVYALQPLDHEEELLELLQFQVSAR DAGVPPLGSNVT LQVFLDENDNAPALLEPRVGGTGAASKLVPRSVG AGHVVAKVRAVDAD SGYNAWLSYELQPAASSPRIPFRVGLYTGESTTRVLD EADSPRHLLVL</p> |
|-----------------|--|

VKDHGEPALTATATVLVSLVESGQAPKASSRQSAGVL
GPEAALVDVNVYL
IIAICAVSLLVLTLLLYTALRCSALPTEGGCRAGKPTLV
CSSAVGSWSY
SQQQPQRVCSGEGPPKTDLMAFSPCLPPDLGSVDV
GEEQDLNVDHGLKVS PFKFRTHKFYLWKL

Amino acids 1 to 814
Tags proprietary tag N-Terminus

Specifications

Our [Abpromise guarantee](#) covers the use of **ab163337** in the following tested applications.

The application notes include recommended starting dilutions; optimal dilutions/concentrations should be determined by the end user.

Applications Western blot
ELISA
Form Liquid
Additional notes Protein concentration is above or equal to 0.05 mg/ml.

Preparation and Storage

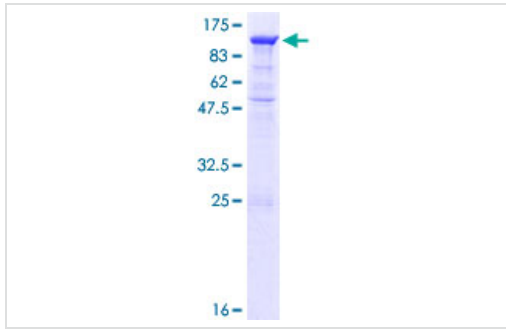
Stability and Storage Shipped on dry ice. Upon delivery aliquot and store at -80°C. Avoid freeze / thaw cycles.
pH: 8.00
Constituents: 0.31% Glutathione, 0.79% Tris HCl

General Info

Relevance PCDHA8 is most likely to play a critical role in the establishment and function of specific cell-cell connections in the brain. Alternative splicing has been observed and additional variants have been suggested but their full-length nature has yet to be determined. Two different isoforms are known.

Cellular localization Cell membrane; Single-pass type I membrane protein

Images



ab163337 on a 12.5% SDS-PAGE stained with Coomassie Blue.

SDS-PAGE - Recombinant Human PCDHA8 protein
(ab163337)

Please note: All products are "FOR RESEARCH USE ONLY AND ARE NOT INTENDED FOR DIAGNOSTIC OR THERAPEUTIC USE"

Our Abpromise to you: Quality guaranteed and expert technical support

- Replacement or refund for products not performing as stated on the datasheet
- Valid for 12 months from date of delivery
- Response to your inquiry within 24 hours

- We provide support in Chinese, English, French, German, Japanese and Spanish
- Extensive multi-media technical resources to help you
- We investigate all quality concerns to ensure our products perform to the highest standards

If the product does not perform as described on this datasheet, we will offer a refund or replacement. For full details of the Abpromise, please visit <https://www.abcam.com/abpromise> or contact our technical team.

Terms and conditions

- Guarantee only valid for products bought direct from Abcam or one of our authorized distributors