

Product datasheet

Recombinant Human PD-L1 protein ab126688

[1 Image](#)

Overview

Product name	Recombinant Human PD-L1 protein
Protein length	Protein fragment

Description

Nature	Recombinant
Source	Escherichia coli
Amino Acid Sequence	
Accession	Q9NZQ7
Species	Human

Sequence	<p>MGSSHHHHHH SSGLVPRGSH MGSMMFTVTV PKDLYVVEYG SNMTIECKFP VEKQLDLAAL IVWEMEDKN IIQFVHGEEED LKVQHSSYRQ RARLLKDQLS LGNAALQITD VKLQDAGVYR CMISYGGADY KRITVKVNAP YNKINQRILV VDPVTSEHEL TCQAEGYPKA EVIWTSSDHQ VLSGKTTTTN SKREEKLFNV TSTLRINTTT NEIFYCTFRR LDPEENHTAE LVIPELPLAH PPNER</p>
-----------------	---

Molecular weight	28 kDa including tags
Amino acids	19 to 238
Tags	His tag N-Terminus
Additional sequence information	Extracellular domain.

Specifications

Our [Abpromise guarantee](#) covers the use of **ab126688** in the following tested applications.

The application notes include recommended starting dilutions; optimal dilutions/concentrations should be determined by the end user.

Applications	<p>Mass Spectrometry</p> <p>SDS-PAGE</p>
Mass spectrometry	MALDI-TOF
Purity	> 90 % SDS-PAGE.

Purified using conventional chromatography.

Form Liquid

Preparation and Storage

Stability and Storage Shipped at 4°C. Store at +4°C short term (1-2 weeks). Upon delivery aliquot. Store at -20°C or -80°C. Avoid freeze / thaw cycle.

pH: 8.00

Constituents: 0.02% DTT, 0.32% Tris HCl, 10% Glycerol

General Info

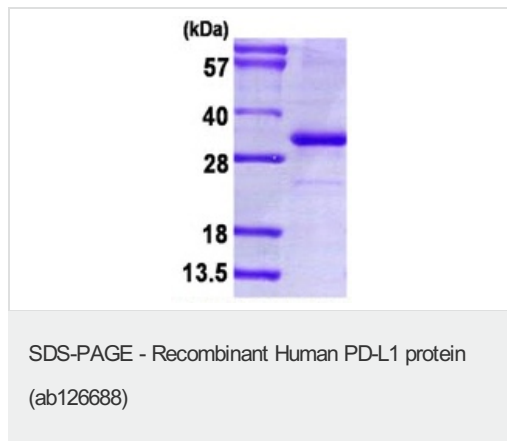
Function Involved in the costimulatory signal, essential for T-cell proliferation and production of IL10 and IFNG, in an IL2-dependent and a PDCD1-independent manner. Interaction with PDCD1 inhibits T-cell proliferation and cytokine production.

Tissue specificity Highly expressed in the heart, skeletal muscle, placenta and lung. Weakly expressed in the thymus, spleen, kidney and liver. Expressed on activated T- and B-cells, dendritic cells, keratinocytes and monocytes.

Sequence similarities Belongs to the immunoglobulin superfamily. BTN/MOG family.
Contains 1 Ig-like C2-type (immunoglobulin-like) domain.
Contains 1 Ig-like V-type (immunoglobulin-like) domain.

Cellular localization Cell membrane and Endomembrane system.

Images



15% SDS-PAGE using 3µg of ab126688.

Please note: All products are "FOR RESEARCH USE ONLY AND ARE NOT INTENDED FOR DIAGNOSTIC OR THERAPEUTIC USE"

Our Promise to you: Quality guaranteed and expert technical support

- Replacement or refund for products not performing as stated on the datasheet
- Valid for 12 months from date of delivery
- Response to your inquiry within 24 hours

- We provide support in Chinese, English, French, German, Japanese and Spanish
- Extensive multi-media technical resources to help you
- We investigate all quality concerns to ensure our products perform to the highest standards

If the product does not perform as described on this datasheet, we will offer a refund or replacement. For full details of the Abpromise, please visit <https://www.abcam.com/abpromise> or contact our technical team.

Terms and conditions

- Guarantee only valid for products bought direct from Abcam or one of our authorized distributors