

Product datasheet

Recombinant human PD-L1 protein (Fc Chimera Active) (Biotin) ab198649

2 Images

Description

<b>Product name</b>	Recombinant human PD-L1 protein (Fc Chimera Active) (Biotin)	
<b>Purity</b>	> 90 % SDS-PAGE.	
<b>Expression system</b>	HEK 293 cells	
<b>Accession</b>	<a href="#">Q9NZQ7</a>	
<b>Protein length</b>	Protein fragment	
<b>Animal free</b>	No	
<b>Nature</b>	Recombinant	
<b>Species</b>	Human	
<b>Sequence</b>	FTVTVPKDLVVEYGSNMTIECKFPVEKQLDLAALIVWE MEDKNIIQFV HGEECLKVQHSSYRQRARLLKDKLSLGNAALQITDVKLQD AGVYRCMISY GGADYKRITVKVNPYNKINQRILVDPVTSEHELTCQAE YPKAEVWT SSDHQVLSGKTTTTNSKREEKLFNVTSTLRINTTTNEIFYCT FRRLDPEE NHTAELVIPPLAHPNERTDIEGRMDPKSCDKTHTCPP CPAPELLGGP SVFLFPPKPKDTLMISRTPEVTCVVVDVSHEDPEVKFNW YVDGVEVHNAK TKPREEQYNSTYRVVSVLTVLHQDWLNGKEYKCKVSNKA LPAPIEKTISK AKGQPREPQVYTLPPSREEMTKNQVSLTCLVKGFYPSDIA VEWESNGQPE NNYKTTTPVLDSGDSFFLYSKLTVDKSRWQQGNVFNCSV MHEALHNHYTQ KSLSLSPGKGGGLNDIFEAQKIEWHE	
<b>Predicted molecular weight</b>	54 kDa including tags	
<b>Amino acids</b>	19 to 239	
<b>Additional sequence information</b>	Recombinant fragment of Human PD-L1 (amino acids 19-239) fused at C terminal with Fc portion of IgG1 with a C-terminal biotin label added using Avi-tag™ technology.	

Conjugation

Biotin

## Specifications

---

Our [Abpromise guarantee](#) covers the use of **ab198649** in the following tested applications.

The application notes include recommended starting dilutions; optimal dilutions/concentrations should be determined by the end user.

**Applications**

SDS-PAGE

Functional Studies

**Form**

Liquid

## Preparation and Storage

---

**Stability and Storage**

Shipped on Dry Ice. Store at -80°C. Avoid freeze / thaw cycle.

pH: 8.00

Constituents: 0.63% Tris HCl, 0.64% Sodium chloride, 0.02% Potassium chloride, 20% Glycerol

This product is an active protein and may elicit a biological response in vivo, handle with caution.

## General Info

---

**Function**

Involved in the costimulatory signal, essential for T-cell proliferation and production of IL10 and IFNG, in an IL2-dependent and a PDCD1-independent manner. Interaction with PDCD1 inhibits T-cell proliferation and cytokine production.

**Tissue specificity**

Highly expressed in the heart, skeletal muscle, placenta and lung. Weakly expressed in the thymus, spleen, kidney and liver. Expressed on activated T- and B-cells, dendritic cells, keratinocytes and monocytes.

**Sequence similarities**

Belongs to the immunoglobulin superfamily. BTN/MOG family.

Contains 1 Ig-like C2-type (immunoglobulin-like) domain.

Contains 1 Ig-like V-type (immunoglobulin-like) domain.

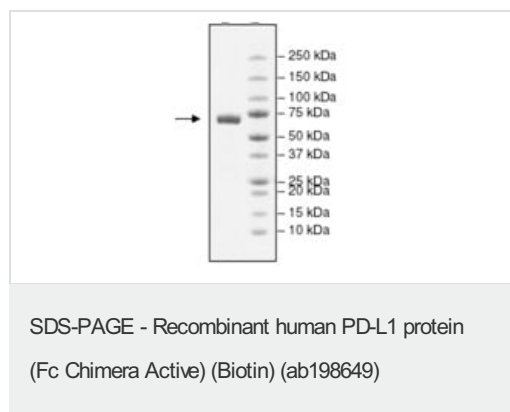
**Cellular localization**

Cell membrane and Endomembrane system.

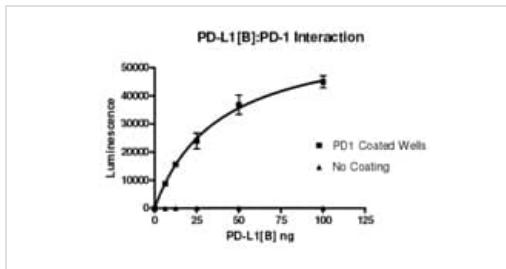
---

## Images

---



4-20% SDS Page analysis of ab198649 (2.1 µg)



Example of specific activity of ab198649

Functional Studies - Recombinant human PD-L1 protein (Fc Chimera Active) (Biotin) (ab198649)

**Please note:** All products are "FOR RESEARCH USE ONLY. NOT FOR USE IN DIAGNOSTIC PROCEDURES"

### Our Abpromise to you: Quality guaranteed and expert technical support

- Replacement or refund for products not performing as stated on the datasheet
- Valid for 12 months from date of delivery
- Response to your inquiry within 24 hours
- We provide support in Chinese, English, French, German, Japanese and Spanish
- Extensive multi-media technical resources to help you
- We investigate all quality concerns to ensure our products perform to the highest standards

If the product does not perform as described on this datasheet, we will offer a refund or replacement. For full details of the Abpromise, please visit <https://www.abcam.com/abpromise> or contact our technical team.

### Terms and conditions

- Guarantee only valid for products bought direct from Abcam or one of our authorized distributors