

## Product datasheet

# Recombinant Human PD-L1 protein (His tag) ab221229

1 Image

### Description

<b>Product name</b>	Recombinant Human PD-L1 protein (His tag)	
<b>Purity</b>	> 95 % SDS-PAGE.	
<b>Endotoxin level</b>	< 1.000 Eu/μg	
<b>Expression system</b>	HEK 293 cells	
<b>Accession</b>	<a href="#">Q9NZQ7</a>	
<b>Protein length</b>	Protein fragment	
<b>Animal free</b>	No	
<b>Nature</b>	Recombinant	
<b>Species</b>	Human	
<b>Sequence</b>	FTVTVPKDLVVEYGSNMIECKFPVEKQLDLAALIVWE MEDKNIIQFV HGEEDLKVQHSSYRQRARLLKDQLSLGNAALQITDVKLQD AGVYRCMISY GGADYKRITVKVNAPYNKINQRILVVDVPTSEHELTCQAE YPKAEVIWT SSDHQVLSGKTTTTNSKREEKLFNVTSTLRINTTTNEIFYCT FRRLDPEE NHTAELVIPELPLAHPNER	
<b>Predicted molecular weight</b>	26 kDa including tags	
<b>Amino acids</b>	19 to 238	
<b>Tags</b>	His tag C-Terminus	
<b>Additional sequence information</b>	Recombinant Human PD-L1 was heavy labeled with [U- <sup>13</sup> C <sub>6</sub> , <sup>15</sup> N <sub>4</sub> ]-L-Arginine and [U- <sup>13</sup> C <sub>6</sub> , <sup>15</sup> N <sub>2</sub> ]-L-Lysine and was fully chemically defined cell culture medium to obtain >99% incorporation efficiency.	

### Specifications

Our [Abpromise guarantee](#) covers the use of **ab221229** in the following tested applications.

The application notes include recommended starting dilutions; optimal dilutions/concentrations should be determined by the end user.

<b>Applications</b>	SDS-PAGE
<b>Form</b>	Lyophilized

## Preparation and Storage

---

### Stability and Storage

Shipped at 4°C. Store at -20°C or -80°C. Avoid freeze / thaw cycle.

pH: 7.40

Constituents: 5% Trehalose, 95% PBS

Lyophilized from 0.22 µm filtered solution.

### Reconstitution

Reconstitute with sterile deionized water to a concentration of 100 µg/ml.

## General Info

---

### Function

Involved in the costimulatory signal, essential for T-cell proliferation and production of IL10 and IFNG, in an IL2-dependent and a PDCD1-independent manner. Interaction with PDCD1 inhibits T-cell proliferation and cytokine production.

### Tissue specificity

Highly expressed in the heart, skeletal muscle, placenta and lung. Weakly expressed in the thymus, spleen, kidney and liver. Expressed on activated T- and B-cells, dendritic cells, keratinocytes and monocytes.

### Sequence similarities

Belongs to the immunoglobulin superfamily. BTN/MOG family.

Contains 1 Ig-like C2-type (immunoglobulin-like) domain.

Contains 1 Ig-like V-type (immunoglobulin-like) domain.

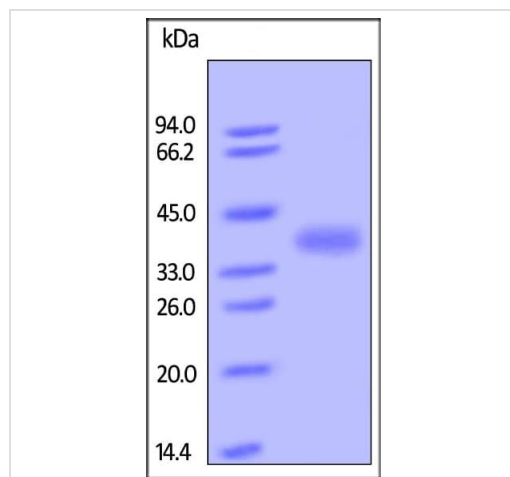
### Cellular localization

Cell membrane and Endomembrane system.

---

## Images

---



SDS-PAGE - Recombinant Human PD-L1 protein  
(His tag) (ab221229)

SDS-PAGE analysis of reduced ab221229 followed by staining overnight with Coomassie Blue. The protein migrates as 35-42 kDa under reducing condition due to glycosylation.

**Please note:** All products are "FOR RESEARCH USE ONLY. NOT FOR USE IN DIAGNOSTIC PROCEDURES"

**Our Abpromise to you: Quality guaranteed and expert technical support**

---

- Replacement or refund for products not performing as stated on the datasheet
- Valid for 12 months from date of delivery
- Response to your inquiry within 24 hours
  
- We provide support in Chinese, English, French, German, Japanese and Spanish
- Extensive multi-media technical resources to help you
- We investigate all quality concerns to ensure our products perform to the highest standards

If the product does not perform as described on this datasheet, we will offer a refund or replacement. For full details of the Abpromise, please visit <https://www.abcam.com/abpromise> or contact our technical team.

### **Terms and conditions**

---

- Guarantee only valid for products bought direct from Abcam or one of our authorized distributors