

## Product datasheet

# Recombinant human PDE1C/PDE1 protein ab125567

[2 Images](#)

### Description

---

<b>Product name</b>	Recombinant human PDE1C/PDE1 protein
<b>Biological activity</b>	The specific activity of ab125567 was determined to be 445 nmol/min/mg.
<b>Purity</b>	> 90 % Densitometry. Purity was determined to be >90% by densitometry.
<b>Expression system</b>	Baculovirus infected Sf9 cells
<b>Accession</b>	<a href="#">Q14123</a>
<b>Protein length</b>	Full length protein
<b>Animal free</b>	No
<b>Nature</b>	Recombinant
<b>Species</b>	Human
<b>Predicted molecular weight</b>	99 kDa including tags
<b>Amino acids</b>	1 to 709

### Specifications

---

Our [Abpromise guarantee](#) covers the use of **ab125567** in the following tested applications.

The application notes include recommended starting dilutions; optimal dilutions/concentrations should be determined by the end user.

<b>Applications</b>	Functional Studies SDS-PAGE
<b>Form</b>	Liquid
<b>Additional notes</b>	This product was previously labelled as PDE1C

### Preparation and Storage

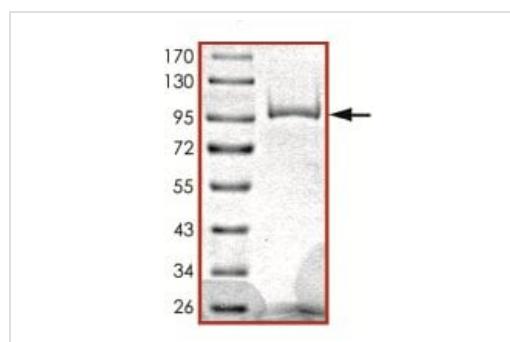
---

<b>Stability and Storage</b>	Shipped on dry ice. Upon delivery aliquot and store at -80°C. Avoid freeze / thaw cycles. pH: 7.50 Constituents: 0.31% Glutathione, 0.002% PMSF, 0.004% DTT, 0.79% Tris HCl, 0.003% EDTA, 25% Glycerol, 0.88% Sodium chloride This product is an active protein and may elicit a biological response in vivo, handle with caution.
------------------------------	---

## General Info

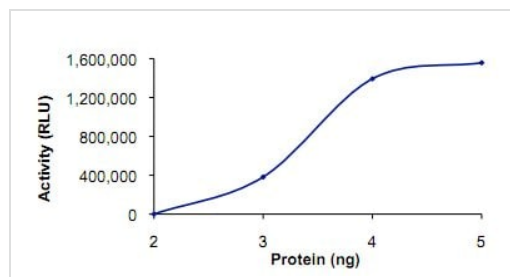
<b>Function</b>	Cyclic nucleotide phosphodiesterase with a dual-specificity for the second messengers cAMP and cGMP, which are key regulators of many important physiological processes. Has a high affinity for both cAMP and cGMP.
<b>Tissue specificity</b>	Expressed in several tissues, including brain and heart.
<b>Sequence similarities</b>	Belongs to the cyclic nucleotide phosphodiesterase family. PDE1 subfamily.

## Images



SDS-PAGE - Recombinant human PDE1C/PDE1 protein (ab125567)

SDS-PAGE analysis of ab125567.



Functional Studies - Recombinant human PDE1C/PDE1 protein (ab125567)

The specific activity of ab125567 was determined to be 445 nmol/min/mg.

**Please note:** All products are "FOR RESEARCH USE ONLY. NOT FOR USE IN DIAGNOSTIC PROCEDURES"

## Our Abpromise to you: Quality guaranteed and expert technical support

- Replacement or refund for products not performing as stated on the datasheet
- Valid for 12 months from date of delivery
- Response to your inquiry within 24 hours
- We provide support in Chinese, English, French, German, Japanese and Spanish
- Extensive multi-media technical resources to help you

- We investigate all quality concerns to ensure our products perform to the highest standards

If the product does not perform as described on this datasheet, we will offer a refund or replacement. For full details of the Abpromise, please visit <https://www.abcam.com/abpromise> or contact our technical team.

### **Terms and conditions**

---

- Guarantee only valid for products bought direct from Abcam or one of our authorized distributors