

Product datasheet

Recombinant human PDE3A protein ab125545

5 Images

Description

---

|                                   |  |
|-----------------------------------|--|
| <b>Product name</b>               | Recombinant human PDE3A protein  |
| <b>Biological activity</b>        | The specific activity of ab125545 was determined to be 500 nmol/min/mg as per activity assay protocol. |
| <b>Purity</b>                     | > 85 % SDS-PAGE.<br>Assessed by densitometry. Affinity purified.                                       |
| <b>Expression system</b>          | Baculovirus infected Sf9 cells   |
| <b>Accession</b>                  | <a href="#">Q14432</a>   |
| <b>Protein length</b>             | Protein fragment   |
| <b>Animal free</b>                | No   |
| <b>Nature</b>                     | Recombinant  |
| <b>Species</b>                    | Human  |
| <b>Predicted molecular weight</b> | 84 kDa   |
| <b>Amino acids</b>                | 669 to 1141  |
| <b>Tags</b>                       | GST tag N-Terminus   |

Specifications

---

Our [Abpromise guarantee](#) covers the use of **ab125545** in the following tested applications.

The application notes include recommended starting dilutions; optimal dilutions/concentrations should be determined by the end user.

|                     |                                |
|---------------------|--------------------------------|
| <b>Applications</b> | Functional Studies<br>SDS-PAGE |
| <b>Form</b>         | Liquid                         |

Preparation and Storage

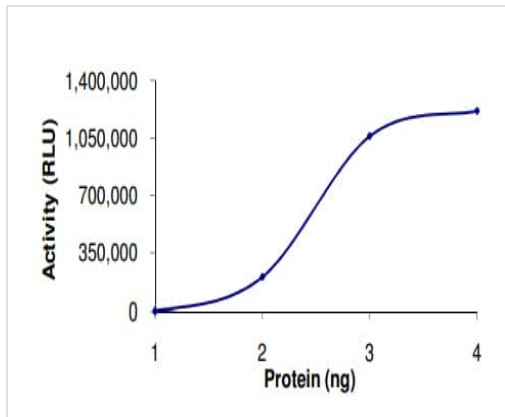
---

|                              |   |
|------------------------------|---|
| <b>Stability and Storage</b> | Shipped on dry ice. Upon delivery aliquot and store at -80°C. Avoid freeze / thaw cycles.<br>pH: 7.50<br>Constituents: 0.002% PMSF, 0.004% DTT, 0.79% Tris HCl, 25% Glycerol (glycerin, glycerine), 0.88% Sodium chloride<br><br>This product is an active protein and may elicit a biological response in vivo, handle with caution. |
|------------------------------|---|

## General Info

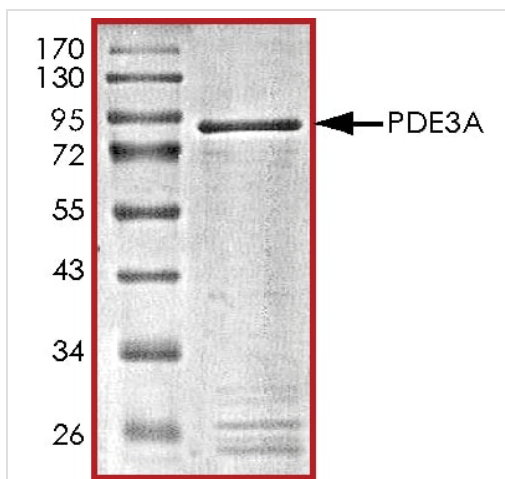
|                              |  |
|------------------------------|--|
| <b>Function</b>              | Cyclic nucleotide phosphodiesterase with a dual-specificity for the second messengers cAMP and cGMP, which are key regulators of many important physiological processes. |
| <b>Sequence similarities</b> | Belongs to the cyclic nucleotide phosphodiesterase family. PDE3 subfamily.   |
| <b>Cellular localization</b> | Membrane.  |

## Images



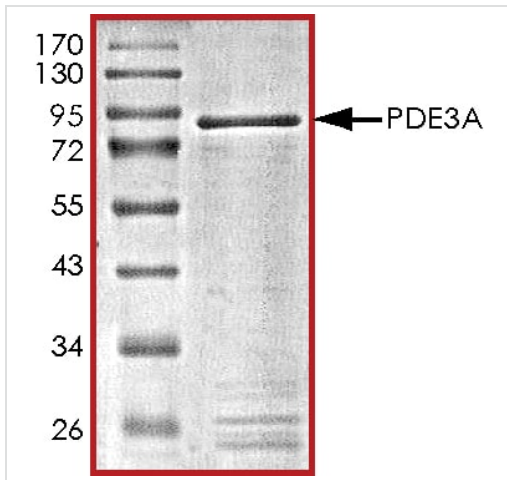
Functional Studies - Recombinant human PDE3A protein (ab125545)

The specific activity of PDE3A (ab125545) was determined to be 550 nmol/min/mg as per activity assay protocol



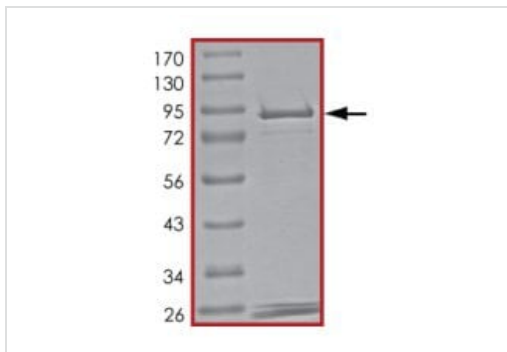
SDS PAGE analysis of ab125545

SDS-PAGE - Recombinant human PDE3A protein (ab125545)



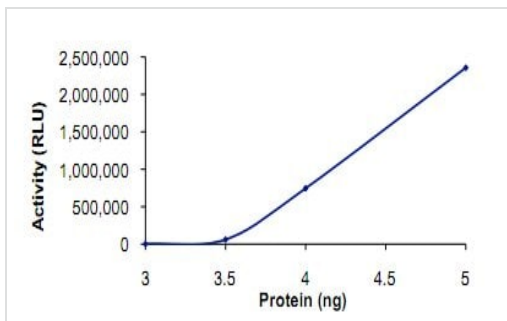
SDS PAGE analysis of ab125545

SDS-PAGE - Recombinant human PDE3A protein (ab125545)



SDS-PAGE analysis of ab125545.

SDS-PAGE - Recombinant human PDE3A protein (ab125545)



The specific activity of ab125545 was determined to be 500nmol/min/mg.

Functional Studies - Recombinant human PDE3A protein (ab125545)

## **Our Abpromise to you: Quality guaranteed and expert technical support**

---

- Replacement or refund for products not performing as stated on the datasheet
- Valid for 12 months from date of delivery
- Response to your inquiry within 24 hours
  
- We provide support in Chinese, English, French, German, Japanese and Spanish
- Extensive multi-media technical resources to help you
- We investigate all quality concerns to ensure our products perform to the highest standards

If the product does not perform as described on this datasheet, we will offer a refund or replacement. For full details of the Abpromise, please visit <https://www.abcam.com/abpromise> or contact our technical team.

## **Terms and conditions**

---

- Guarantee only valid for products bought direct from Abcam or one of our authorized distributors