

Product datasheet

Recombinant human PDE3A protein ab198445

2 Images

Description

Product name	Recombinant human PDE3A protein
Biological activity	Specific Activity: ≥ 4000 pmol/min/ μ l
Purity	> 82 % SDS-PAGE.
Expression system	Baculovirus infected Sf9 cells
Accession	Q14432
Protein length	Protein fragment
Animal free	No
Nature	Recombinant
Species	Human
Sequence	<p>KPILAPEPLVMDNLDSIMEQLNTWNFPIDLVENIGRKCGRI LSQVSYRL FEDMGLFEAFKIPIREFMNYFHALEIGYRDIPYHNRIHATDVL HAVWYLT TQPIPGLSTVINDHGSTSDSDSDSGFTHGHMGYVFSKTYN VTDDKYGCLS GNIPALELMALYAAAMHDYDHPGRTNAFLVATSAPQAVL YNDRSVLENH HAAAAWNLFMSRPEYNFLINLDHVEFKHFRFLVIEAILATDL KKHFDFVA KFNGKVNDVVGIDWTNENDRLLVCQMCIKLADINGPAKCK ELHLQWTDGI VNEFYEQGDEEASLGLPISPFMDRSAPQLANLQESFISHV GPLCNSYDS AGLMPGKWVEDSDESGDTDDPEEEEEEEAPAPNEEETC ENNESPKKKTFKR RKIYCQITQHLLQNHKMWKKVIEEQRLAGIENQSLDQTPQ SHSSEQIQA IKEEEEEK GKPRGEEIPTQKPDQ</p>
Predicted molecular weight	82 kDa including tags
Amino acids	669 to 1141
Tags	His tag N-Terminus , GST tag N-Terminus

Specifications

Our [Abpromise guarantee](#) covers the use of **ab198445** in the following tested applications.

The application notes include recommended starting dilutions; optimal dilutions/concentrations should be determined by the end user.

Applications	Functional Studies SDS-PAGE
Form	Liquid
Additional notes	Useful for the study of enzyme kinetics, screening inhibitors, and selectivity profiling.

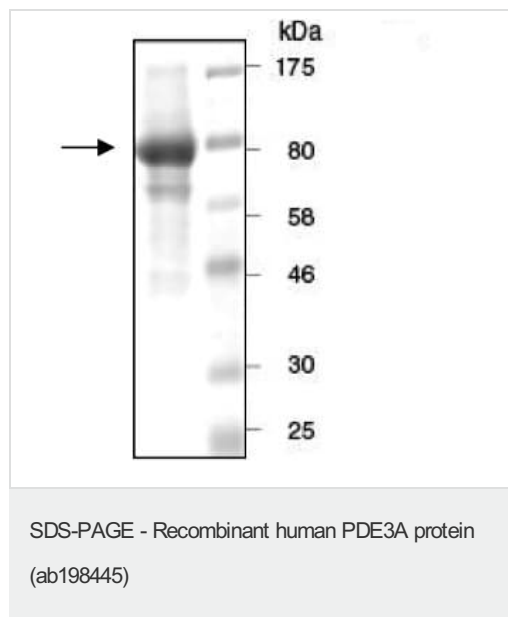
Preparation and Storage

Stability and Storage	Shipped on Dry Ice. Store at -80°C. Avoid freeze / thaw cycle. pH: 8.00 Constituents: 0.63% Tris HCl, 0.64% Sodium chloride, 0.02% Potassium chloride, 0.05% DTT, 20% Glycerol, 0.49% Glutathione This product is an active protein and may elicit a biological response in vivo, handle with caution.
------------------------------	---

General Info

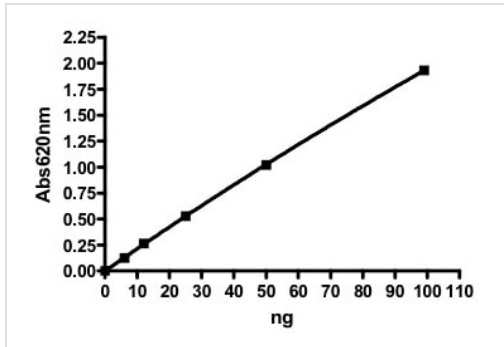
Function	Cyclic nucleotide phosphodiesterase with a dual-specificity for the second messengers cAMP and cGMP, which are key regulators of many important physiological processes.
Sequence similarities	Belongs to the cyclic nucleotide phosphodiesterase family. PDE3 subfamily.
Cellular localization	Membrane.

Images



10% SDS-PAGE with Coomassie staining: 5 µg ab198445.

SDS-PAGE - Recombinant human PDE3A protein
(ab198445)



Example of specific activity of ab198445.

Functional Studies - Recombinant human PDE3A protein (ab198445)

Please note: All products are "FOR RESEARCH USE ONLY. NOT FOR USE IN DIAGNOSTIC PROCEDURES"

Our Abpromise to you: Quality guaranteed and expert technical support

- Replacement or refund for products not performing as stated on the datasheet
- Valid for 12 months from date of delivery
- Response to your inquiry within 24 hours
- We provide support in Chinese, English, French, German, Japanese and Spanish
- Extensive multi-media technical resources to help you
- We investigate all quality concerns to ensure our products perform to the highest standards

If the product does not perform as described on this datasheet, we will offer a refund or replacement. For full details of the Abpromise, please visit <https://www.abcam.com/abpromise> or contact our technical team.

Terms and conditions

- Guarantee only valid for products bought direct from Abcam or one of our authorized distributors