

Product datasheet

Recombinant Human PDE9A protein ab159078

1 Image

Overview

Product name	Recombinant Human PDE9A protein
Protein length	Full length protein

Description

Nature	Recombinant
Source	Wheat germ
Amino Acid Sequence	
Species	Human

Sequence	<p> MGS GSSSYRPKA IMLDIDGRIQKVIFSKYCNSSDIMDLF CIATGLPRNTT ISLLTTDDAMV SIDPTMPANSERTPYKVRPVAIKQLSER EELIQSVLAQV AEQFSRAFKINELKAEVANHLAVLEKRVELEGLKVVEI EKCKSDIKKMRE ELAARSSRTNCPCKYSFLDNHKKLTPRRDVPTYPKYLL SPETIEALRKPT FDVWLWEPNEMLSCLEHMYHDLGLVDRDFSINPVTLR WLFCVHDNYRNNP FHNFRHCF CVAQMMYSMVWLC SLQEKF SQT DILILMT AAICHDL DHPGYN NTYQINARTE LAVRYNDISPLENHHCAVAFQILAEPECNI FSNIPPDGFK QIRQGMITLILATDMARHAEIMDSFKEKEMENFDYSNEEH MTL LKMILIC CDISNEVRPMEVAEPWVDC LLEEYFMQSDREKSEGL PVAPFMDRDKVTKA TAQIGFIKFV LIPMFETVTKLFPMVEEIMLQPLWESRDR YEELKRIDDAM KELQKKTDSL TSGATEKSRERSRDVKNSEGDCA </p>
-----------------	---

Amino acids	1 to 533
Tags	proprietary tag N-Terminus

Specifications

Our [Abpromise guarantee](#) covers the use of **ab159078** in the following tested applications.

The application notes include recommended starting dilutions; optimal dilutions/concentrations should be determined by the end user.

Applications	ELISA Western blot
Form	Liquid
Additional notes	Protein concentration is above or equal to 0.05 mg/ml.

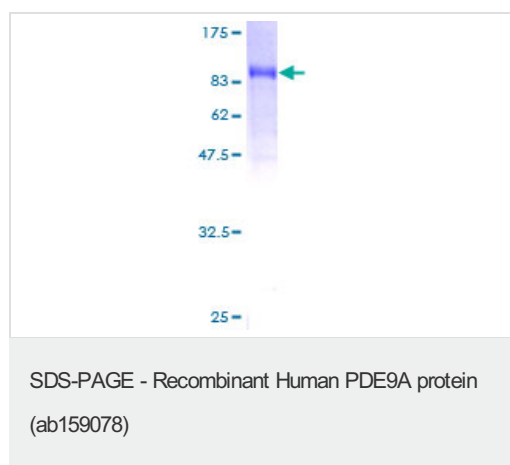
Preparation and Storage

Stability and Storage	Shipped on dry ice. Upon delivery aliquot and store at -80°C. Avoid freeze / thaw cycles. pH: 8.00 Constituents: 0.31% Glutathione, 0.79% Tris HCl
------------------------------	--

General Info

Function	Hydrolyzes the second messenger cGMP, which is a key regulator of many important physiological processes.
Tissue specificity	Expressed in all tissues examined (testis, brain, small intestine, skeletal muscle, heart, lung, thymus, spleen, placenta, kidney, liver, pancreas, ovary and prostate) except blood. Highest levels in brain, heart, kidney, spleen, prostate and colon. Isoform PDE9A12 is found in prostate.
Sequence similarities	Belongs to the cyclic nucleotide phosphodiesterase family. PDE9 subfamily.
Domain	Composed of a C-terminal catalytic domain containing two putative divalent metal sites and an N-terminal regulatory domain.
Cellular localization	Cytoplasm. Endoplasmic reticulum; Cell projection > ruffle membrane. Cytoplasm > perinuclear region and Cell projection > ruffle membrane. Cytoplasm > perinuclear region. Golgi apparatus. Endoplasmic reticulum.

Images



ab159078 on a 12.5% SDS-PAGE stained with Coomassie Blue.

Please note: All products are "FOR RESEARCH USE ONLY AND ARE NOT INTENDED FOR DIAGNOSTIC OR THERAPEUTIC USE"

Our Abpromise to you: Quality guaranteed and expert technical support

- Replacement or refund for products not performing as stated on the datasheet
- Valid for 12 months from date of delivery
- Response to your inquiry within 24 hours

- We provide support in Chinese, English, French, German, Japanese and Spanish
- Extensive multi-media technical resources to help you
- We investigate all quality concerns to ensure our products perform to the highest standards

If the product does not perform as described on this datasheet, we will offer a refund or replacement. For full details of the Abpromise, please visit <https://www.abcam.com/abpromise> or contact our technical team.

Terms and conditions

- Guarantee only valid for products bought direct from Abcam or one of our authorized distributors