

Product datasheet

Recombinant human PDGFR beta protein ab60833

4 Images

Description

Product name	Recombinant human PDGFR beta protein
Biological activity	Specific Activity: 20 nmol/min/mg.
Purity	> 90 % SDS-PAGE. Purity: >90% as determined by densitometry.
Expression system	Baculovirus infected Sf9 cells
Accession	P09619-1
Protein length	Protein fragment
Animal free	No
Nature	Recombinant
Species	Human
Predicted molecular weight	104 kDa
Amino acids	557 to 1106
Tags	GST tag N-Terminus
Additional sequence information	Recombinant fragment, corresponding to amino acids 557-end of Human PDGF Receptor beta.

Specifications

Our [Abpromise guarantee](#) covers the use of **ab60833** in the following tested applications.

The application notes include recommended starting dilutions; optimal dilutions/concentrations should be determined by the end user.

Applications	Functional Studies SDS-PAGE
Form	Liquid
Additional notes	ab204877 (Poly (4:1 Glu, Tyr) peptide) can be utilized as a substrate for assessing kinase activity

Preparation and Storage

Stability and Storage	Shipped on dry ice. Upon delivery aliquot and store at -80°C. Avoid freeze / thaw cycles. pH: 7.50 Constituents: 0.0038% EGTA, 0.00174% PMSF, 0.00385% DTT, 0.79% Tris HCl, 0.00292% EDTA, 25% Glycerol (glycerin, glycerine), 0.87% Sodium chloride
------------------------------	--

This product is an active protein and may elicit a biological response in vivo, handle with caution.

General Info

Function

Receptor that binds specifically to PDGFB and PDGFD and has a tyrosine-protein kinase activity. Phosphorylates Tyr residues at the C-terminus of PTPN11 creating a binding site for the SH2 domain of GRB2.

Involvement in disease

Note=A chromosomal aberration involving PDGFRB is found in a form of chronic myelomonocytic leukemia (CMML). Translocation t(5;12)(q33;p13) with EVT6/TEL. It is characterized by abnormal clonal myeloid proliferation and by progression to acute myelogenous leukemia (AML).

Note=A chromosomal aberration involving PDGFRB may be a cause of acute myelogenous leukemia. Translocation t(5;14)(q33;q32) with TRIP11. The fusion protein may be involved in clonal evolution of leukemia and eosinophilia.

Note=A chromosomal aberration involving PDGFRB may be a cause of juvenile myelomonocytic leukemia. Translocation t(5;17)(q33;p11.2) with SPECC1.

Defects in PDGFRB are a cause of myeloproliferative disorder chronic with eosinophilia (MPE) [MIM:131440]. A hematologic disorder characterized by malignant eosinophils proliferation.

Note=A chromosomal aberration involving PDGFRB is found in many instances of myeloproliferative disorder chronic with eosinophilia. Translocation t(5;12) with ETV6 on chromosome 12 creating an PDGFRB-ETV6 fusion protein.

Note=A chromosomal aberration involving PDGFRB may be the cause of a myeloproliferative disorder (MBD) associated with eosinophilia. Translocation t(1;5)(q23;q33) that forms a PDE4DIP-PDGFRB fusion protein.

Sequence similarities

Belongs to the protein kinase superfamily. Tyr protein kinase family. CSF-1/PDGF receptor subfamily.

Contains 5 Ig-like C2-type (immunoglobulin-like) domains.

Contains 1 protein kinase domain.

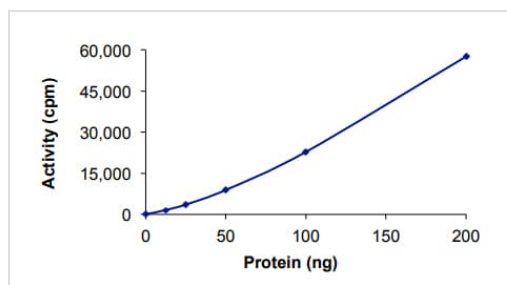
Post-translational modifications

Autophosphorylated. Dephosphorylated by PTPRJ at Tyr-751, Tyr-857, Tyr-1009 and Tyr-1021.

Cellular localization

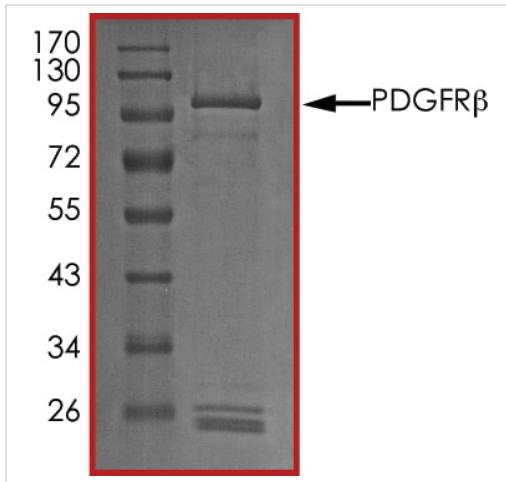
Membrane.

Images



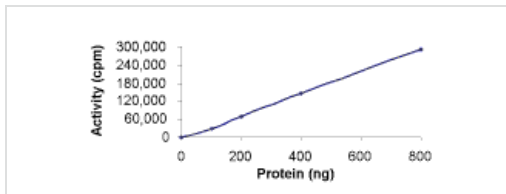
The specific activity of PDGFR beta (ab60833) was determined to be 18 nmol/min/mg as per activity assay protocol

Functional Studies - Recombinant human PDGFR
beta protein (ab60833)



SDS PAGE analysis of ab60833

SDS-PAGE - Recombinant human PDGFR beta protein (ab60833)



Sample Kinase Activity Plot.

Functional Studies - Recombinant human PDGFR beta protein (ab60833)



ab60833 on SDS-PAGE, MW ~104kDa.

SDS-PAGE - Recombinant human PDGFR beta protein (ab60833)

Please note: All products are "FOR RESEARCH USE ONLY. NOT FOR USE IN DIAGNOSTIC PROCEDURES"

Our Abpromise to you: Quality guaranteed and expert technical support

- Replacement or refund for products not performing as stated on the datasheet
- Valid for 12 months from date of delivery
- Response to your inquiry within 24 hours
- We provide support in Chinese, English, French, German, Japanese and Spanish
- Extensive multi-media technical resources to help you
- We investigate all quality concerns to ensure our products perform to the highest standards

If the product does not perform as described on this datasheet, we will offer a refund or replacement. For full details of the Abpromise, please visit <https://www.abcam.com/abpromise> or contact our technical team.

Terms and conditions

- Guarantee only valid for products bought direct from Abcam or one of our authorized distributors