

Product datasheet

Recombinant Human PDIA5 protein ab161215

1 Image

Overview

Product name	Recombinant Human PDIA5 protein
Protein length	Full length protein

Description

Nature	Recombinant
Source	Wheat germ
Amino Acid Sequence	
Species	Human

Sequence	<p>MARAGPAWLLLAWVVLP SWLSSAKVSSLIERISDPKD LKKLLRTRNNVL VLYSKSEVAAENHLRLLSTVAQAVKGGTICWVDCGD AESRKLCKKMKVD LSPKDKKVELFHYQDGAFHTEYNRAVTFKSVAFLKDP KGPPLWEEDPGA KDVVHLDSEKDFRRLKKEEKPLLIMFYAPWCSMCKR MMPHFQKAATQLR GHAVLAGMNVYSSEFENIKEEYSVRGFPTICYFEKGRF LFQYDNYGSTAE DIVEWLKNPQQPQPVPETPWADEGGSVYHLTDEDF DQFVKEHSSVLMVF HAPWCGHCKKMKPEFEKAAEALHGEADSSGVLA AV DATVNKALAERFHIS EFPTLKYFKNGEKYAVPVLRTKKKFLEWMQNPEAPP PEPTWEEQQT SVL HLVGDNFRETLKKKHTLVMFYAPWCPHCKKVIPHFT ATADAFKDDRKIA CAAVDCVKDKNQDLCQQEAVKGYPTFHYHYGKFAE KYDSDRTELGFTNYIRALREGDHERLGKKKEEL</p>
-----------------	---

Amino acids	1 to 519
Tags	proprietary tag N-Terminus

Specifications

Our [Abpromise guarantee](#) covers the use of **ab161215** in the following tested applications.

The application notes include recommended starting dilutions; optimal dilutions/concentrations should be determined by the end user.

Applications	Western blot ELISA
Form	Liquid
Additional notes	Protein concentration is above or equal to 0.05 mg/ml.

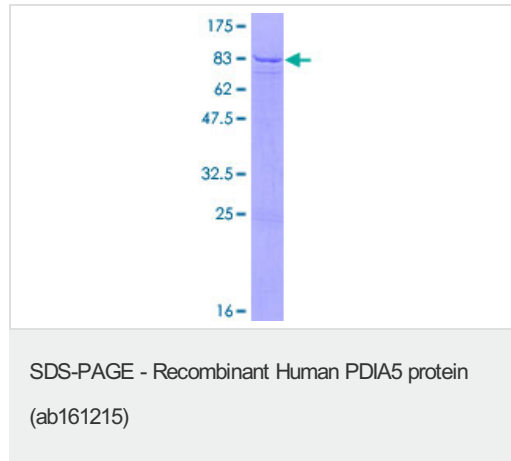
Preparation and Storage

Stability and Storage	Shipped on dry ice. Upon delivery aliquot and store at -80°C. Avoid freeze / thaw cycles. pH: 8.00 Constituents: 0.31% Glutathione, 0.79% Tris HCl
------------------------------	--

General Info

Sequence similarities	Belongs to the protein disulfide isomerase family. Contains 3 thioredoxin domains.
Cellular localization	Endoplasmic reticulum lumen.

Images



ab161215 on a 12.5% SDS-PAGE stained with Coomassie Blue.

Please note: All products are "FOR RESEARCH USE ONLY AND ARE NOT INTENDED FOR DIAGNOSTIC OR THERAPEUTIC USE"

Our Abpromise to you: Quality guaranteed and expert technical support

- Replacement or refund for products not performing as stated on the datasheet
- Valid for 12 months from date of delivery
- Response to your inquiry within 24 hours
- We provide support in Chinese, English, French, German, Japanese and Spanish
- Extensive multi-media technical resources to help you

- We investigate all quality concerns to ensure our products perform to the highest standards

If the product does not perform as described on this datasheet, we will offer a refund or replacement. For full details of the Abpromise, please visit <https://www.abcam.com/abpromise> or contact our technical team.

Terms and conditions

- Guarantee only valid for products bought direct from Abcam or one of our authorized distributors