

Product datasheet

Recombinant Human PDK2L1 protein ab160301

1 Image

Overview

Product name	Recombinant Human PDK2L1 protein
Protein length	Full length protein

Description

Nature	Recombinant
Source	Wheat germ
Amino Acid Sequence	
Species	Human

Sequence	<p>MNAVGSPEGQELQKLGSGAWDNPAYSGPPSPHGTL RVCTISSTGPLQPQP KKPEDEPQETAYRTQVSSCCLHNCQGIRGLWGTTLTE NTAENRELYIKTT LRELLVYVFLVDICLLTYGMTSSSAYYYTKVMSEFLHT PSDTGVSFQA ISSMADFWDFAQGPLLDLSLYWTKWYNNQSLGHGSHS FIYENMLLGVPRL RQLKVRNDSCVVHEDFREDILSCYDVYSPDKEEQLPF GPFNGTAWTYHSQ DELGGFSHWGRLTSYSGGGYLDLPGSRQGSAEALR ALQEGLWLDRGTRV VFIDFSVYNANINLFCVLRRLVVEFPATGGAIPSWQIRTV KLIRYVSNWDF FVGCEVIFCVFIFYVVEEILELHIHRLRYLSSIWNILDLV VILLSVA VGFHIFRTLEVNRLMGKLLQQPNTYADFEFLAFWQTQY NNMNAVNLFFAW IKIFKYISFNKTMTQLSSTLARCAKDILGFAVMFFIVFFAY AQLGYLLFG TQVENFSTFIKCIFTQFRILGDFDYNAIDNANRILGPAYF VTYVFFVFF VLLNMFLAINDTYSEVKEELAGQKDELQLSDLLKQGYN KTLLRLRLRKE RVSDVQKVLQGGEQEIQFEDFTNTLRELGHAEHEITEL TATFTKFD RDGN</p>
-----------------	---

RILDEKEQEKMQRQDLEEERVALNTEIEKLGSRIVSSPQ
GKSGPEAARAGG
WVSGEEFYMLTRRVLQLETVLEGVVVSQIDAVGSKLKM
LERKGWLAPSPGV
KEQAIWKHPQPAPAVTPDPWGVQGGQESEVPYKREE
EAL EERRLSRGEIP TLQRS

Amino acids 1 to 805
Tags GST tag N-Terminus

Specifications

Our [Abpromise guarantee](#) covers the use of **ab160301** in the following tested applications.

The application notes include recommended starting dilutions; optimal dilutions/concentrations should be determined by the end user.

Applications Western blot
ELISA
Form Liquid
Additional notes Protein concentration is above or equal to 0.05 mg/ml.

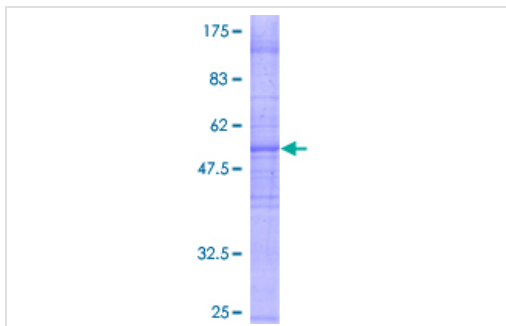
Preparation and Storage

Stability and Storage Shipped on dry ice. Upon delivery aliquot and store at -80°C. Avoid freeze / thaw cycles.
pH: 8.00
Constituents: 0.31% Glutathione, 0.79% Tris HCl

General Info

Function May function as a subunit of an ion channel and act as a transducer of calcium-mediated signaling.
Tissue specificity Expressed in adult heart, skeletal muscle, brain, spleen, testis, retina and liver. According to PubMed:9748274, expressed at high levels in fetal tissues, including kidney and liver, and down-regulated in adult tissues. According to PubMed:10602361, expressed in fetal brain, but not expressed in fetal lung, liver or kidney. Isoform 4 appears to be expressed only in transformed lymphoblasts.
Sequence similarities Belongs to the polycystin family.
Cellular localization Membrane.

Images



ab160301 on a 12.5% SDS-PAGE stained with Coomassie Blue.

SDS-PAGE - Recombinant Human PDK2L1 protein
(ab160301)

Please note: All products are "FOR RESEARCH USE ONLY AND ARE NOT INTENDED FOR DIAGNOSTIC OR THERAPEUTIC USE"

Our Abpromise to you: Quality guaranteed and expert technical support

- Replacement or refund for products not performing as stated on the datasheet
- Valid for 12 months from date of delivery
- Response to your inquiry within 24 hours
- We provide support in Chinese, English, French, German, Japanese and Spanish
- Extensive multi-media technical resources to help you
- We investigate all quality concerns to ensure our products perform to the highest standards

If the product does not perform as described on this datasheet, we will offer a refund or replacement. For full details of the Abpromise, please visit <https://www.abcam.com/abpromise> or contact our technical team.

Terms and conditions

- Guarantee only valid for products bought direct from Abcam or one of our authorized distributors