

## Product datasheet

# Recombinant Human Pepsin protein ab159101

1 Image

### Description

<b>Product name</b>	Recombinant Human Pepsin protein	
<b>Expression system</b>	Wheat germ	
<b>Protein length</b>	Protein fragment	
<b>Animal free</b>	No	
<b>Nature</b>	Recombinant	
<b>Species</b>	Human	
<b>Sequence</b>	WNQGLVSQDLFSVYLSADDKSGSVVIFGGIDSSYYTGSLN WVPVTEGYW QITVDSITMNGETIACAEGCQAMDTGTSLLTGPTSPIANIQS DIGASEN SDGD	
<b>Amino acids</b>	203 to 306	
<b>Tags</b>	GST tag N-Terminus	

### Specifications

Our [Abpromise guarantee](#) covers the use of **ab159101** in the following tested applications.

The application notes include recommended starting dilutions; optimal dilutions/concentrations should be determined by the end user.

<b>Applications</b>	ELISA
	Western blot
<b>Form</b>	Liquid

### Additional notes

### Preparation and Storage

<b>Stability and Storage</b>	Shipped on dry ice. Upon delivery aliquot and store at -80°C. Avoid freeze / thaw cycles.
	pH: 8.00
	Constituents: 0.31% Glutathione, 0.79% Tris HCl

### General Info

**Relevance**

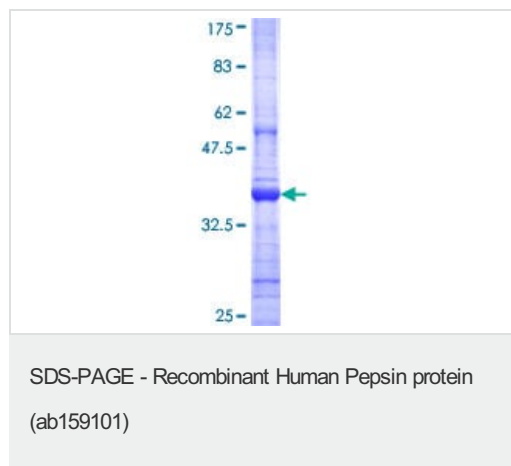
Pepsin is a digestive enzyme with particularly broad specificity. It is stored as pepsinogen, so only released when needed. In the stomach, chief cells release pepsinogen. The hormone gastrin and the vagus nerve trigger the release of both pepsinogen and HCl from the stomach lining when food is ingested. HCl creates an acidic environment which allows pepsinogen to unfold and cleave itself in an autocatalytic fashion, thereby generating pepsin (the active form). Pepsin may then cleave the dietary proteins into smaller peptides.

**Cellular localization**

Secreted

**Images**

---



ab159101 on a 12.5% SDS-PAGE stained with Coomassie Blue.

**Please note:** All products are "FOR RESEARCH USE ONLY. NOT FOR USE IN DIAGNOSTIC PROCEDURES"

**Our Abpromise to you: Quality guaranteed and expert technical support**

---

- Replacement or refund for products not performing as stated on the datasheet
- Valid for 12 months from date of delivery
- Response to your inquiry within 24 hours
  
- We provide support in Chinese, English, French, German, Japanese and Spanish
- Extensive multi-media technical resources to help you
- We investigate all quality concerns to ensure our products perform to the highest standards

If the product does not perform as described on this datasheet, we will offer a refund or replacement. For full details of the Abpromise, please visit <https://www.abcam.com/abpromise> or contact our technical team.

**Terms and conditions**

---

- Guarantee only valid for products bought direct from Abcam or one of our authorized distributors