

Product datasheet

Recombinant Human PFTK1 protein ab159098

1 Image

Overview

<b>Product name</b>	Recombinant Human PFTK1 protein
<b>Protein length</b>	Full length protein

Description

<b>Nature</b>	Recombinant
<b>Source</b>	Wheat germ
<b>Amino Acid Sequence</b>	
<b>Species</b>	Human

<b>Sequence</b>	<p>MHGYFGCNAAAEPGYSAFVGTPQICVTKMSTRNCQG  MDSVIKPLDTIPED  KKVRVQRTQSTFDPFEKPANQVKRVHSENNACINFKT  SSTGKESPKVRRH  SSPSSPTSPKFGKADSYEKLEKLGEGSYATVYKGKSK  VNGKLVALKVIRL  QEEEGTPFTAIREASLLKGLKHANVLLHDIHTKETLTLV  FEYVHTDLC  QYMDKHPGGLHPDVKLFLFQLLRGLSYHQRYLHRDL  KPQNLLISDTG  ELKLADFGLARAKSVPSHTYSNEVVTLWYRPPDVLLG  STEYSTCLDMWGV  GCIFVEMIQQVAAFPGMKDIQDQLERIFLVLGTPNEDT  WPGVHSLPHFKP  ERFTLYSSKNLRQAWNKLSYVNHAEDLASKLLQCSPK  NRLSAQAALSHEY  FSDLPPRLWELTDMSSIFTVPNVRLQPEAGESMRAFG  KNNSYGGKSLNSK H</p>
-----------------	--

<b>Amino acids</b>	1 to 451
<b>Tags</b>	GST tag N-Terminus

Specifications

Our [Abpromise guarantee](#) covers the use of **ab159098** in the following tested applications.

The application notes include recommended starting dilutions; optimal dilutions/concentrations should be determined by the end user.

<b>Applications</b>	ELISA Western blot
<b>Form</b>	Liquid
<b>Additional notes</b>	Protein concentration is above or equal to 0.05 mg/ml.

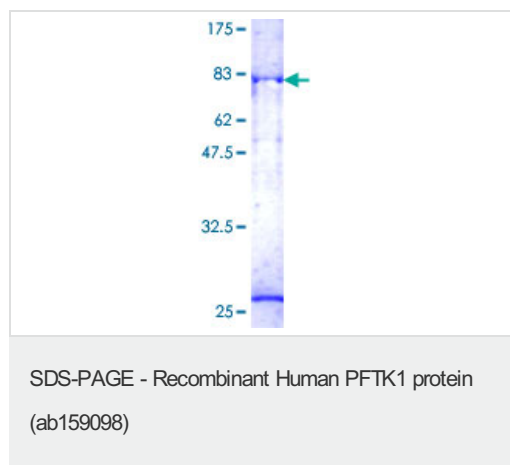
## Preparation and Storage

<b>Stability and Storage</b>	Shipped on dry ice. Upon delivery aliquot and store at -80°C. Avoid freeze / thaw cycles. pH: 8.00 Constituents: 0.31% Glutathione, 0.79% Tris HCl
------------------------------	--

## General Info

<b>Function</b>	Serine/threonine-protein kinase involved in the control of the eukaryotic cell cycle, whose activity is controlled by an associated cyclin. Acts as a cell-cycle regulator of Wnt signaling pathway during G2/M phase by mediating the phosphorylation of LRP6 at 'Ser-1490', leading to the activation of the Wnt signaling pathway. Acts as a regulator of cell cycle progression and cell proliferation via its interaction with CCDN3. Phosphorylates RB1 in vitro, however the relevance of such result remains to be confirmed in vivo. May also play a role in meiosis, neuron differentiation and may indirectly act as a negative regulator of insulin-responsive glucose transport.
<b>Tissue specificity</b>	Highly expressed in brain, pancreas, kidney, heart, testis and ovary. Also detected at lower levels in other tissues except in spleen and thymus where expression is barely detected.
<b>Sequence similarities</b>	Belongs to the protein kinase superfamily. CMGC Ser/Thr protein kinase family. CDC2/CDKX subfamily. Contains 1 protein kinase domain.
<b>Cellular localization</b>	Cell membrane. Cytoplasm. Nucleus. Recruited to the cell membrane by CCNY.

## Images



ab159098 on a 12.5% SDS-PAGE stained with Coomassie Blue.

**Please note:** All products are "FOR RESEARCH USE ONLY AND ARE NOT INTENDED FOR DIAGNOSTIC OR THERAPEUTIC USE"

## **Our Abpromise to you: Quality guaranteed and expert technical support**

---

- Replacement or refund for products not performing as stated on the datasheet
- Valid for 12 months from date of delivery
- Response to your inquiry within 24 hours
  
- We provide support in Chinese, English, French, German, Japanese and Spanish
- Extensive multi-media technical resources to help you
- We investigate all quality concerns to ensure our products perform to the highest standards

If the product does not perform as described on this datasheet, we will offer a refund or replacement. For full details of the Abpromise, please visit <https://www.abcam.com/abpromise> or contact our technical team.

## **Terms and conditions**

---

- Guarantee only valid for products bought direct from Abcam or one of our authorized distributors