

Product datasheet

Recombinant Human PGBD3 protein ab166107

1 Image

Overview

Product name	Recombinant Human PGBD3 protein
Protein length	Full length protein

Description

Nature	Recombinant
Source	Wheat germ
Amino Acid Sequence	
Species	Human

Sequence	<p>MPRTL^SLHEITD^LLETDD^SIEASA^IVIQPPENATAPVSDE ESGDEEGGTI NNLP^GSLLHTAA^YLIQD^GSDAESD^SDDPSYAPKDDSP DEVPSTFTVQ^QPP PSRR^RKMTKILCK^WKKADLTVQ^PVAGRVTAPPNDFF^T VMRTPTEILE^LFL DDE^VIEL^MKYSN^LYAC^SKG^VHLGLTSSE^FK^CFLGIIF^LS G^YSV^PRR^RRM FWE^QRTDVH^NVL^VSAAM^RRRDRFETIF^SNLHVAD^NANL DPVD^KFS^KLR^PLI SKL^NERC^MK^FVP^NETY^FSFDEF^MVP^YFGRHG^CK^QFIR GK^PIR^FGY^KFW^CG ATCL^GYIC^WFQ^PYQ^GK^NPNTK^HE^EY^GV^GAS^LV^LQ^FSE ALTEA^HPG^QY^HFV FNN^FFTSIAL^LDKL^SSM^GHQATGTV^RKD^HID^KV^PLE^SD VAL^KKK^KERG^TFD YR^IDG^KGN^IVC^RW^NDN^SV^VTVASS^GAGI^HPL^CL^VSR^YS Q^LL^KKK^KI^QV^QQ^P NMI^KV^YN^QFM^GG^VDRAD^ENID^KY^RASIR^GK^KW^YSS^PLL FCFEL^VL^QNA^WQ LH^KTYDE^KP^VDFLE^FFR^RRV^VCH^YLE^TH^GHP^PE^PG^QK^G RP^QK^RN^ID^SRY^DG IN^HV^MK^QG^KQ^TRCA^ECHK^NTT^FR^CE^KCD^VAL^HV^KC^S VE^YH^TE</p>
-----------------	---

Amino acids	1 to 593
--------------------	----------

Tags

GST tag N-Terminus

Specifications

Our [Abpromise guarantee](#) covers the use of **ab166107** in the following tested applications.

The application notes include recommended starting dilutions; optimal dilutions/concentrations should be determined by the end user.

Applications

Western blot

ELISA

Form

Liquid

Additional notes

Protein concentration is above or equal to 0.05 mg/ml.

Preparation and Storage

Stability and Storage

Shipped on dry ice. Upon delivery aliquot and store at -80°C. Avoid freeze / thaw cycles.

pH: 8.00

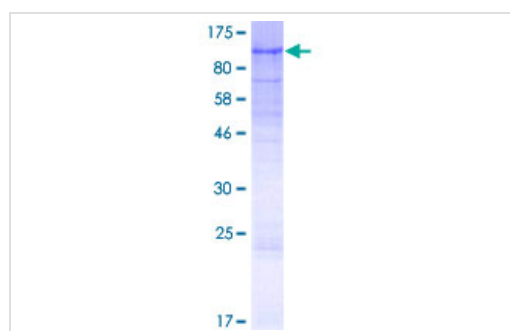
Constituents: 0.31% Glutathione, 0.79% Tris HCl

General Info

Relevance

The piggyBac family of proteins, found in diverse animals, are transposases related to the transposase of the canonical piggyBac transposon from the moth, *Trichoplusia ni*. This family also includes genes in several genomes, including human, that appear to have been derived from the piggyBac transposons. PGBD3 belongs to the subfamily of piggyBac transposable element derived (PGBD) genes. The PGBD proteins appear to be novel, with no obvious relationship to other transposases, or other known protein families. PGBD3 overlaps with the ERCC6 gene on chromosome 10, and pseudogenes of this locus have been found on chromosomes 4, 5 and 12.

Images



ab166107 on a 12.5% SDS-PAGE stained with Coomassie Blue.

SDS-PAGE - Recombinant Human PGBD3 protein
(ab166107)

Please note: All products are "FOR RESEARCH USE ONLY AND ARE NOT INTENDED FOR DIAGNOSTIC OR THERAPEUTIC USE"

Our Abpromise to you: Quality guaranteed and expert technical support

- Replacement or refund for products not performing as stated on the datasheet
- Valid for 12 months from date of delivery
- Response to your inquiry within 24 hours

- We provide support in Chinese, English, French, German, Japanese and Spanish
- Extensive multi-media technical resources to help you
- We investigate all quality concerns to ensure our products perform to the highest standards

If the product does not perform as described on this datasheet, we will offer a refund or replacement. For full details of the Abpromise, please visit <https://www.abcam.com/abpromise> or contact our technical team.

Terms and conditions

- Guarantee only valid for products bought direct from Abcam or one of our authorized distributors