

Product datasheet

Recombinant Human PGM2L1 protein ab166124

1 Image

Description

Product name	Recombinant Human PGM2L1 protein
Expression system	Wheat germ
Protein length	Full length protein
Animal free	No
Nature	Recombinant
Species	Human

Sequence	<p>MAENTEGDLNSNLPHAPYHTGDPQLDTAIGQWLRWD KNPKTKEQIENLLR NGMNKELRDRLCCRMTFGTAGLRSAMGAGFCYNDLT VIQSTQGMKYLE RCFSDFKQRGFVVGYDTRGQVTSSCSSQRLAKLTAA VLLAKDVPVYLFSSR YVPTFPVPYAVQKLKAVAGVMITASHNRKEDNGYKVY WETGAQITSPHDK EILKCIEECVEPWNGSWNDNLVDTSPDKRDPLQDICR RYMEDLKKICFYR ELNSKTTLKFVHTSFHGVGHDIYQLAFKVFYGFKPPIPV PEQKDPDPDFST VKCPNPEEGESVLELSLRLAEKENARVVLATDPDADR LAAAELQENGCKW VFTGNELAAALFGWWMFDCWKKNKSRNADVKNVYML ATTVSSKILKAIK EGFHFEETLPGFKWIGSRIIDLLENGKEVLFVAFEEESIGFL CGTSVLDKDG VSAVVVAEMASYLETMNITLKQQLVKVYEKYGYHISKT SYFLCYEPPTI KSIFERLRNFDSPKEYPKFCGTFAILHVRDITTYDSSQ PNKKSVPVSK NSQMITFTFQNGCVATLRTSGTEPKIKYYAEMCASPDQ SDTALLEEELKK LIDALIENFLQPSKNGLIWRSV</p>
-----------------	--

Amino acids	1 to 622
Tags	GST tag N-Terminus

Specifications

Specifications

Our [Abpromise guarantee](#) covers the use of **ab166124** in the following tested applications.

The application notes include recommended starting dilutions; optimal dilutions/concentrations should be determined by the end user.

Applications	ELISA Western blot
Form	Liquid
Additional notes	Protein concentration is above or equal to 0.05 mg/ml.

Preparation and Storage

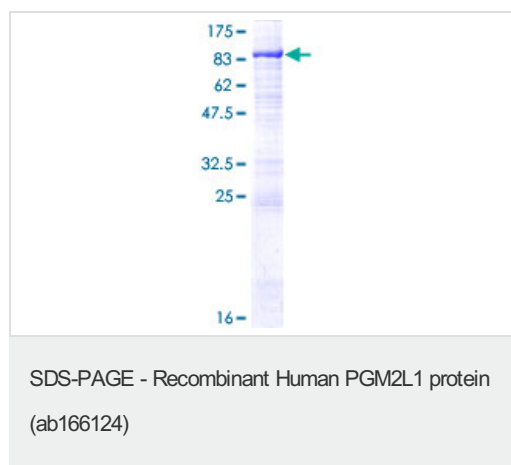
Stability and Storage	Shipped on dry ice. Upon delivery aliquot and store at -80°C. Avoid freeze / thaw cycles. pH: 8.00 Constituents: 0.31% Glutathione, 0.79% Tris HCl
------------------------------	--

General Info

Relevance	PGM2L1 belongs to the phosphohexose mutase family. It is a glucose 1,6-bisphosphate synthase using 1,3-bisphosphoglycerate as a phosphate donor and a series of 1-phosphate sugars as acceptors, including glucose 1-phosphate, mannose 1-phosphate, ribose 1-phosphate and deoxyribose 1-phosphate. It does not use 5 or 6-phosphosugars as they are bad substrates, with the exception of glucose 6-phosphate. PGM2L1 also synthesizes ribose 1,5-bisphosphate. It has only low phosphopentomutase and phosphoglucomutase activities.
------------------	---

Cellular localization	Cytoplasmic
------------------------------	-------------

Images



ab166124 on a 12.5% SDS-PAGE stained with Coomassie Blue.

Please note: All products are "FOR RESEARCH USE ONLY. NOT FOR USE IN DIAGNOSTIC PROCEDURES"

Our Abpromise to you: Quality guaranteed and expert technical support

- Replacement or refund for products not performing as stated on the datasheet

- Valid for 12 months from date of delivery
- Response to your inquiry within 24 hours

- We provide support in Chinese, English, French, German, Japanese and Spanish
- Extensive multi-media technical resources to help you
- We investigate all quality concerns to ensure our products perform to the highest standards

If the product does not perform as described on this datasheet, we will offer a refund or replacement. For full details of the Abpromise, please visit <https://www.abcam.com/abpromise> or contact our technical team.

Terms and conditions

- Guarantee only valid for products bought direct from Abcam or one of our authorized distributors