

Product datasheet

# Recombinant Human PIGV protein ab163163

1 Image

Overview

---

<b>Product name</b>	Recombinant Human PIGV protein
<b>Protein length</b>	Full length protein

Description

---

<b>Nature</b>	Recombinant
<b>Source</b>	Wheat germ
<b>Amino Acid Sequence</b>	
<b>Species</b>	Human

<b>Sequence</b>	<p>MWPQDPSRKEVLRFAVSCRILTLMLQALFNAIIPDHHA  EAFSPRLAPSG  FVDQLVEGLLGGLSHWDAEHFLFIAEHGYLYEHNFAFF  PGFPLALLVGTE  LLRPLRGLLSLRSCLLISVASLNFLFFMLAAVALHDLGC  LVLHCPHQSFY  AALLFCLSPANVFLAAGYSEALFALLTFSAMGQLERG  RVWTSVLLFAFAT  GVRSNGLVSVGFLMHSQCQGGFSSLTMLNPLRQLFKL  MASLFLSVFTLGL  PFALFQYYAYTQFCLPGSARPIPEPLVQLAVDKGYRIAE  GNEPPWCFWDV  PLIYSIQDVYWNVGFLLKYYELKQVPNFLAAPVAILVA  WATWTYVTTHP  WLCLTLGLQRSKNNKTLEKPDGFLSPQVFVYVVHAA  VLLLFGGLCMHVQ  VLTRFLGSSTPIMYWFP AHLLQDQEPLLRSLKTPWKP  LAEDSPPGQKVP  RNPIMGLLYHWKTCSPVTRYILGYFLTYWLLGLLLHCNF  LPWT</p>
-----------------	---

<b>Amino acids</b>	1 to 493
<b>Tags</b>	GST tag N-Terminus

Specifications

---

Our [Abpromise guarantee](#) covers the use of **ab163163** in the following tested applications.

The application notes include recommended starting dilutions; optimal dilutions/concentrations should be determined by the end user.

<b>Applications</b>	ELISA Western blot
<b>Form</b>	Liquid
<b>Additional notes</b>	Protein concentration is above or equal to 0.05 mg/ml.

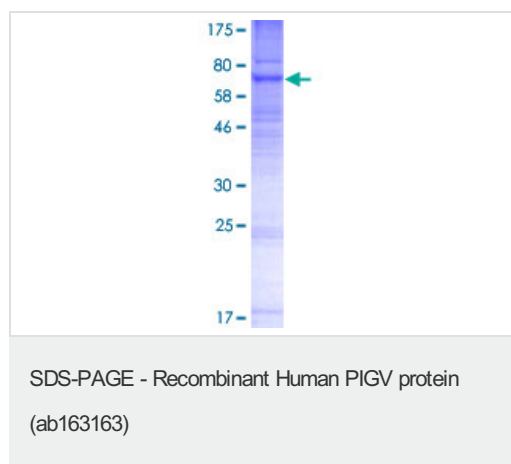
## Preparation and Storage

<b>Stability and Storage</b>	Shipped on dry ice. Upon delivery aliquot and store at -80°C. Avoid freeze / thaw cycles. pH: 8.00 Constituents: 0.31% Glutathione, 0.79% Tris HCl
------------------------------	--

## General Info

<b>Function</b>	Alpha-1,6-mannosyltransferase involved in glycosylphosphatidylinositol-anchor biosynthesis. Transfers the second mannose to the glycosylphosphatidylinositol during GPI precursor assembly.
<b>Pathway</b>	Glycolipid biosynthesis; glycosylphosphatidylinositol-anchor biosynthesis.
<b>Involvement in disease</b>	Defects in PIGV are the cause of hyperphosphatasia with mental retardation (HPMR) [MIM:239300]. It is a syndrome characterized by elevated serum alkaline phosphatase, severe mental retardation, seizures, hypotonia, facial dysmorphism, and hypoplastic terminal phalanges.
<b>Sequence similarities</b>	Belongs to the PIGV family.
<b>Post-translational modifications</b>	Not N-glycosylated.
<b>Cellular localization</b>	Endoplasmic reticulum membrane.

## Images



ab163163 on a 12.5% SDS-PAGE stained with Coomassie Blue.

**Please note:** All products are "FOR RESEARCH USE ONLY AND ARE NOT INTENDED FOR DIAGNOSTIC OR THERAPEUTIC USE"

## **Our Abpromise to you: Quality guaranteed and expert technical support**

---

- Replacement or refund for products not performing as stated on the datasheet
- Valid for 12 months from date of delivery
- Response to your inquiry within 24 hours
  
- We provide support in Chinese, English, French, German, Japanese and Spanish
- Extensive multi-media technical resources to help you
- We investigate all quality concerns to ensure our products perform to the highest standards

If the product does not perform as described on this datasheet, we will offer a refund or replacement. For full details of the Abpromise, please visit <https://www.abcam.com/abpromise> or contact our technical team.

## **Terms and conditions**

---

- Guarantee only valid for products bought direct from Abcam or one of our authorized distributors