

Product datasheet

Recombinant human PIM3 protein ab204146

2 Images

Description

|                                   |                                                                                                                                                                                                                                                                                                                                                                         |
|-----------------------------------|-------------------------------------------------------------------------------------------------------------------------------------------------------------------------------------------------------------------------------------------------------------------------------------------------------------------------------------------------------------------------|
| <b>Product name</b>               | Recombinant human PIM3 protein                                                                                                                                                                                                                                                                                                                                          |
| <b>Biological activity</b>        | The specific activity is 900 mol/min/mg.                                                                                                                                                                                                                                                                                                                                |
| <b>Purity</b>                     | > 90 % Densitometry.                                                                                                                                                                                                                                                                                                                                                    |
| <b>Expression system</b>          | Baculovirus infected Sf9 cells                                                                                                                                                                                                                                                                                                                                          |
| <b>Accession</b>                  | <a href="#">Q86V86</a>                                                                                                                                                                                                                                                                                                                                                  |
| <b>Protein length</b>             | Full length protein                                                                                                                                                                                                                                                                                                                                                     |
| <b>Animal free</b>                | No                                                                                                                                                                                                                                                                                                                                                                      |
| <b>Nature</b>                     | Recombinant                                                                                                                                                                                                                                                                                                                                                             |
| <b>Species</b>                    | Human                                                                                                                                                                                                                                                                                                                                                                   |
| <b>Sequence</b>                   | <pre> MLLSKFGSLAHL CGPGGVDHLPVKILQPAKADKESFEKA YQVGAVLGSGG FGTVYAGSRIADGLPVAVKHVVKERVTEWGS LGGATVPL EVL LRKVGAA GGARGVIRLLDWFERP DGFL LVLERPEPAQDLFD FITERGALDEPLAR RFFAQVLA AVRHCHSCGVVHRDIK DENLLVDLRSGELKLI DFGSGALLKD TVYTDFD GTRVYSPPEWIRYHRYHGRSATVWSLGVLLYDM VCGDIPFEQD EEILRGRLLFRRRVSPECQQLIRWCLSLRP SERPSLDQIAA HPWMLGADG GVPESCDLRLCTLDPDDVASTTSSSESL </pre> |
| <b>Predicted molecular weight</b> | 65 kDa including tags                                                                                                                                                                                                                                                                                                                                                   |
| <b>Amino acids</b>                | 1 to 326                                                                                                                                                                                                                                                                                                                                                                |
| <b>Tags</b>                       | GST tag N-Terminus                                                                                                                                                                                                                                                                                                                                                      |

Specifications

Our [Abpromise guarantee](#) covers the use of **ab204146** in the following tested applications.

The application notes include recommended starting dilutions; optimal dilutions/concentrations should be determined by the end user.

|                     |                    |
|---------------------|--------------------|
| <b>Applications</b> | Functional Studies |
|                     | SDS-PAGE           |

|                         |                                                                                                      |
|-------------------------|------------------------------------------------------------------------------------------------------|
| <b>Form</b>             | Liquid                                                                                               |
| <b>Additional notes</b> | <a href="#">ab204879</a> (RPS6 peptide) can be utilized as a substrate for assessing kinase activity |

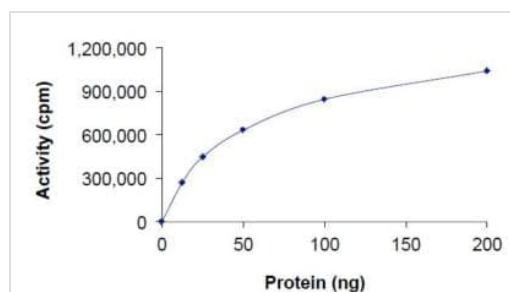
## Preparation and Storage

|                              |                                                                                                                                                                                                                                                                                                                                                                                  |
|------------------------------|----------------------------------------------------------------------------------------------------------------------------------------------------------------------------------------------------------------------------------------------------------------------------------------------------------------------------------------------------------------------------------|
| <b>Stability and Storage</b> | <p>Shipped on Dry Ice. Upon delivery aliquot. Store at -80°C. Avoid freeze / thaw cycle.</p> <p>pH: 7.50</p> <p>Constituents: 0.79% Tris HCl, 25% Glycerol (glycerin, glycerine), 0.002% PMSF, 0.004% DTT, 0.87% Sodium chloride, 0.31% Glutathione, 0.003% EDTA</p> <p>This product is an active protein and may elicit a biological response in vivo, handle with caution.</p> |
|------------------------------|----------------------------------------------------------------------------------------------------------------------------------------------------------------------------------------------------------------------------------------------------------------------------------------------------------------------------------------------------------------------------------|

## General Info

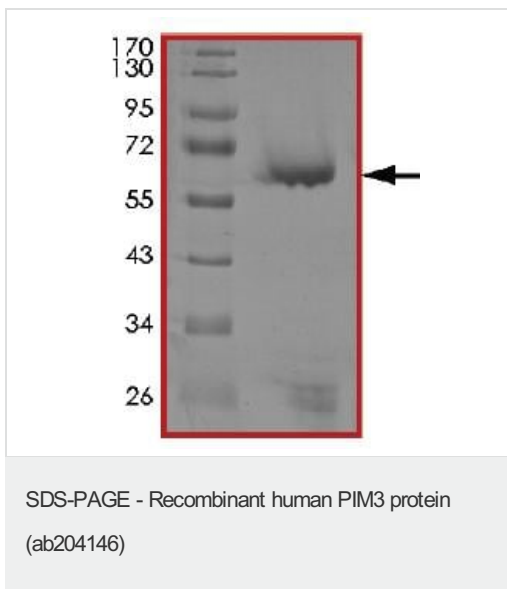
|                              |                                                                                                                                                                                                                                                   |
|------------------------------|---------------------------------------------------------------------------------------------------------------------------------------------------------------------------------------------------------------------------------------------------|
| <b>Function</b>              | Able to phosphorylate CDKN1B in vitro. Involved in cell cycle progression and suppression of apoptosis. Implicated in proliferation of human hepatoma cell lines.                                                                                 |
| <b>Tissue specificity</b>    | Widely expressed. No expression in colon, thymus, and small intestine. Expressed in human hepatoma cell lines but not in normal liver tissues. Expressed in colon cancer samples, particularly at the less advanced stages of cancer development. |
| <b>Sequence similarities</b> | Belongs to the protein kinase superfamily. CAMK Ser/Thr protein kinase family. PIM subfamily. Contains 1 protein kinase domain.                                                                                                                   |

## Images



Sample Kinase Activity Plot. ab204146 specific activity was determined to be 900 nmol/min/mg.

Functional Studies - Recombinant human PIM3 protein (ab204146)



SDS-PAGE analysis of ab204146. MW 65 KDa.

**Please note:** All products are "FOR RESEARCH USE ONLY. NOT FOR USE IN DIAGNOSTIC PROCEDURES"

### Our Abpromise to you: Quality guaranteed and expert technical support

---

- Replacement or refund for products not performing as stated on the datasheet
- Valid for 12 months from date of delivery
- Response to your inquiry within 24 hours
- We provide support in Chinese, English, French, German, Japanese and Spanish
- Extensive multi-media technical resources to help you
- We investigate all quality concerns to ensure our products perform to the highest standards

If the product does not perform as described on this datasheet, we will offer a refund or replacement. For full details of the Abpromise, please visit <https://www.abcam.com/abpromise> or contact our technical team.

### Terms and conditions

---

- Guarantee only valid for products bought direct from Abcam or one of our authorized distributors