

## Product datasheet

# Recombinant Human PITX1/BFT protein ab114744

1 Image

### Description

<b>Product name</b>	Recombinant Human PITX1/BFT protein	
<b>Expression system</b>	Wheat germ	
<b>Accession</b>	<a href="#">P78337</a>	
<b>Protein length</b>	Full length protein	
<b>Animal free</b>	No	
<b>Nature</b>	Recombinant	
<b>Species</b>	Human	
<b>Sequence</b>	MDAFKGGMSLERLPEGLRPPPPPPHDMGPAFHLARPAD PREPLENSASES SDTELPEKERGGEPKGPEDSGAGGTGCGGADDPAKKK KQRRQRTHFTSQQ LQELEATFQRNRYPDMSMREEIAVWTNLTEPRVRVWFKN RRAKWRKRERN QQLDLCKGGYVPQFSGLVQPYEDVYAAGYSYNNWAAKSL APAPLSTKSFT FFNSMSPLSSQSMFSAPSSISSMTMPSSMGP GAVPGMP NSGLNNINLTG SSLNSAMSPGACPYGTPASPYSVYRDTCNSSLASLR LKS KQHSSFGYGAL QGPASGLNACQYNS	
<b>Predicted molecular weight</b>	61 kDa including tags	
<b>Amino acids</b>	1 to 314	

### Specifications

Our [Abpromise guarantee](#) covers the use of **ab114744** in the following tested applications.

The application notes include recommended starting dilutions; optimal dilutions/concentrations should be determined by the end user.

<b>Applications</b>	ELISA
	Western blot
	SDS-PAGE
<b>Form</b>	Liquid
<b>Additional notes</b>	This product was previously labelled as PITX1.

## Preparation and Storage

---

**Stability and Storage** Shipped on dry ice. Upon delivery aliquot and store at -80°C. Avoid freeze / thaw cycles.  
pH: 8.00  
Constituents: 0.3% Glutathione, 0.79% Tris HCl

## General Info

---

**Function** May play a role in the development of anterior structures, and in particular, the brain and facies and in specifying the identity or structure of hindlimb.

**Involvement in disease** Defects in PITX1 are a cause of congenital clubfoot (CCF) [MIM:119800]; also known as talipes equinovarus (TEV). Clubfoot is a congenital limb deformity defined as fixation of the foot in cavus, adductus, varus, and equinus (i.e. inclined inwards, axially rotated outwards, and pointing downwards) with concomitant soft tissue abnormalities. Clubfoot may occur in isolation or as part of a syndrome. Clubfoot appears to be a multifactorial trait.

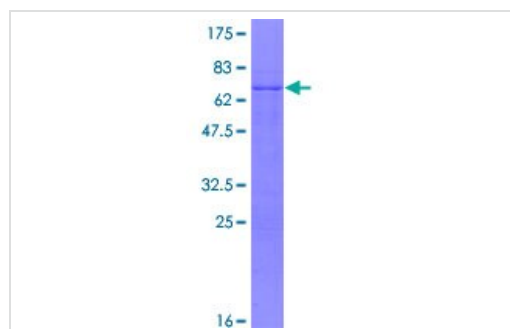
**Sequence similarities** Belongs to the paired homeobox family. Bicoid subfamily.  
Contains 1 homeobox DNA-binding domain.

**Cellular localization** Nucleus.

---

## Images

---



12.5% SDS-PAGE showing ab114744 at approximately 60.61kDa.  
Stained with Coomassie Blue.

SDS-PAGE - Recombinant Human PITX1/BFT  
protein (ab114744)

**Please note:** All products are "FOR RESEARCH USE ONLY. NOT FOR USE IN DIAGNOSTIC PROCEDURES"

## Our Abpromise to you: Quality guaranteed and expert technical support

---

- Replacement or refund for products not performing as stated on the datasheet
- Valid for 12 months from date of delivery
- Response to your inquiry within 24 hours
- We provide support in Chinese, English, French, German, Japanese and Spanish

- Extensive multi-media technical resources to help you
- We investigate all quality concerns to ensure our products perform to the highest standards

If the product does not perform as described on this datasheet, we will offer a refund or replacement. For full details of the Abpromise, please visit <https://www.abcam.com/abpromise> or contact our technical team.

### **Terms and conditions**

---

- Guarantee only valid for products bought direct from Abcam or one of our authorized distributors