

## Product datasheet

# Recombinant human PKC gamma protein ab60842

[5 Images](#)

### Description

---

<b>Product name</b>	Recombinant human PKC gamma protein
<b>Purity</b>	> 80 % Densitometry. Affinity purified.
<b>Expression system</b>	Baculovirus infected Sf9 cells
<b>Protein length</b>	Full length protein
<b>Animal free</b>	No
<b>Nature</b>	Recombinant
<b>Species</b>	Human
<b>Tags</b>	GST tag N-Terminus

### Specifications

---

Our [Abpromise guarantee](#) covers the use of **ab60842** in the following tested applications.

The application notes include recommended starting dilutions; optimal dilutions/concentrations should be determined by the end user.

<b>Applications</b>	Functional Studies SDS-PAGE
<b>Form</b>	Liquid
<b>Additional notes</b>	<a href="#">ab204875</a> (PKC epsilon peptide) can be utilized as a substrate for assessing kinase activity

### Preparation and Storage

---

<b>Stability and Storage</b>	Shipped on dry ice. Upon delivery aliquot and store at -80°C. Avoid freeze / thaw cycles. pH: 7.50 Constituents: 0.0038% EGTA, 0.00174% PMSF, 0.00385% DTT, 0.79% Tris HCl, 0.00292% EDTA, 25% Glycerol (glycerin, glycerine), 0.87% Sodium chloride This product is an active protein and may elicit a biological response in vivo, handle with caution.
------------------------------	--

### General Info

---

<b>Function</b>	This is a calcium-activated, phospholipid-dependent, serine- and threonine-specific enzyme.
-----------------	---

PKC is activated by diacylglycerol which in turn phosphorylates a range of cellular proteins. PKC also serves as the receptor for phorbol esters, a class of tumor promoters.

### Tissue specificity

Expressed in Purkinje cells of the cerebellar cortex.

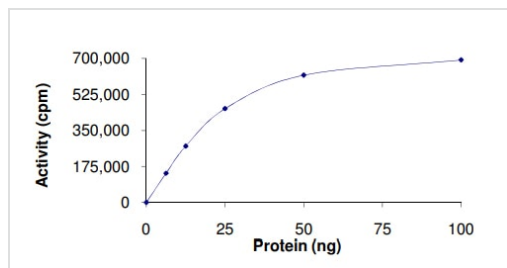
### Involvement in disease

Defects in PRKCG are the cause of spinocerebellar ataxia type 14 (SCA14) [MIM:605361]. Spinocerebellar ataxia is a clinically and genetically heterogeneous group of cerebellar disorders. Patients show progressive incoordination of gait and often poor coordination of hands, speech and eye movements, due to degeneration of the cerebellum with variable involvement of the brainstem and spinal cord. SCA14 is an autosomal dominant cerebellar ataxia (ADCA).

### Sequence similarities

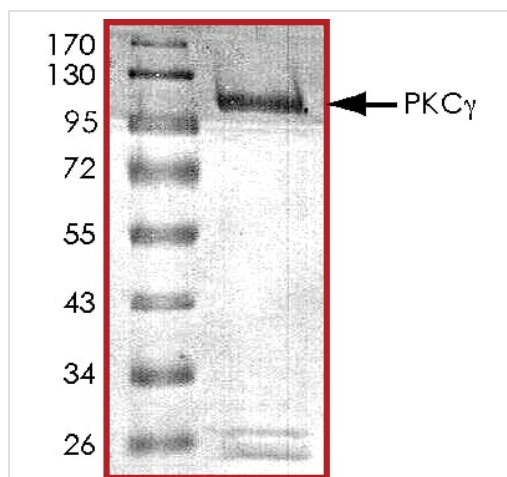
Belongs to the protein kinase superfamily. AGC Ser/Thr protein kinase family. PKC subfamily. Contains 1 AGC-kinase C-terminal domain. Contains 1 C2 domain. Contains 2 phorbol-ester/DAG-type zinc fingers. Contains 1 protein kinase domain.

## Images



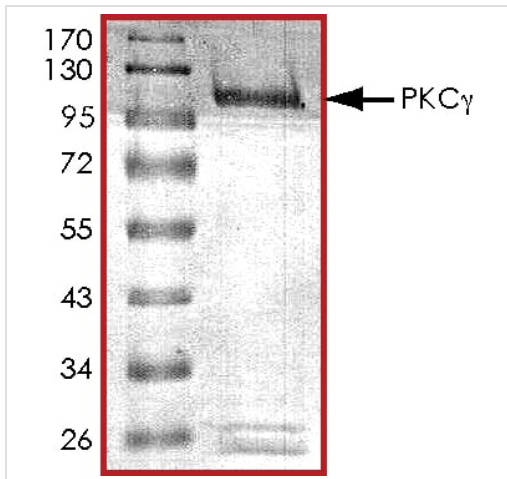
The specific activity of PKC gamma (ab60842) was determined to be 586 nmol/min/mg as per activity assay protocol

Functional Studies - Recombinant human PKC gamma protein (ab60842)



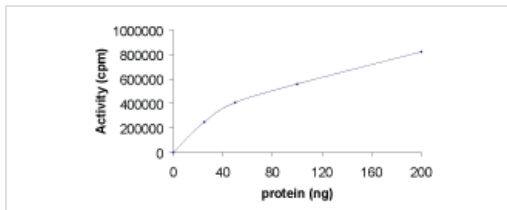
SDS PAGE analysis of ab60842

SDS-PAGE - Recombinant human PKC gamma protein (ab60842)



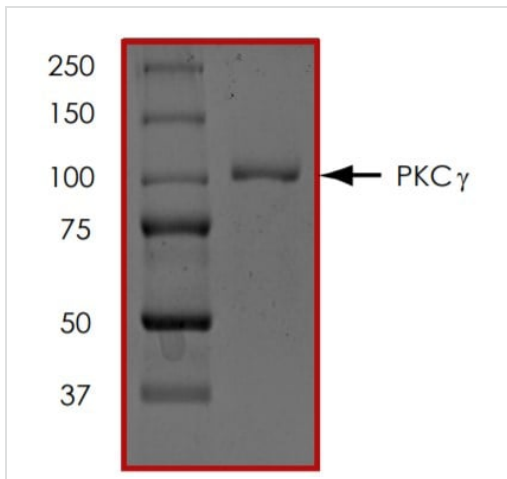
SDS PAGE analysis of ab60842

SDS-PAGE - Recombinant human PKC gamma protein (ab60842)



Sample Kinase Activity Plot.

Functional Studies - Recombinant human PKC gamma protein (ab60842)



ab60842 on SDS-PAGE, MW ~105 kDa.

SDS-PAGE - Recombinant human PKC gamma protein (ab60842)

**Please note:** All products are "FOR RESEARCH USE ONLY. NOT FOR USE IN DIAGNOSTIC PROCEDURES"

## **Our Abpromise to you: Quality guaranteed and expert technical support**

---

- Replacement or refund for products not performing as stated on the datasheet
- Valid for 12 months from date of delivery
- Response to your inquiry within 24 hours
  
- We provide support in Chinese, English, French, German, Japanese and Spanish
- Extensive multi-media technical resources to help you
- We investigate all quality concerns to ensure our products perform to the highest standards

If the product does not perform as described on this datasheet, we will offer a refund or replacement. For full details of the Abpromise, please visit <https://www.abcam.com/abpromise> or contact our technical team.

## **Terms and conditions**

---

- Guarantee only valid for products bought direct from Abcam or one of our authorized distributors