

Product datasheet

Recombinant Human PKHD1L1 protein ab164931

1 Image

Description

<b>Product name</b>	Recombinant Human PKHD1L1 protein	
<b>Expression system</b>	Wheat germ	
<b>Protein length</b>	Protein fragment	
<b>Animal free</b>	No	
<b>Nature</b>	Recombinant	
<b>Species</b>	Human	
<b>Sequence</b>	KATDSDGNCVSVGITALTLRAILKDSNNNQVNGLSGNT TIPFSSCWANYT DLTPLRTGKNYKIEFILDNVVGVESRTFSLLA	
<b>Amino acids</b>	4105 to 4186	
<b>Tags</b>	GST tag N-Terminus	

Specifications

Our [Abpromise guarantee](#) covers the use of **ab164931** in the following tested applications. The application notes include recommended starting dilutions; optimal dilutions/concentrations should be determined by the end user.

<b>Applications</b>	ELISA Western blot
<b>Form</b>	Liquid
<b>Additional notes</b>	

Preparation and Storage

<b>Stability and Storage</b>	Shipped on dry ice. Upon delivery aliquot and store at -80°C. Avoid freeze / thaw cycles. pH: 8.00 Constituents: 0.31% Glutathione, 0.79% Tris HCl
------------------------------	--

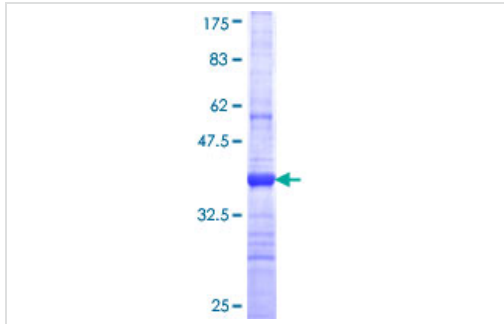
General Info

<b>Tissue specificity</b>	Ubiquitous. Expressed in spleen and thymus as well as in activated T-cells and B lymphoblasts.
<b>Sequence similarities</b>	Contains 2 G8 domains. Contains 14 IPT/TIG domains. Contains 9 PbH1 repeats.
<b>Cellular localization</b>	Membrane.

---

## Images

---



ab164931 on a 12.5% SDS-PAGE stained with Coomassie Blue.

SDS-PAGE - Recombinant Human PKHD1L1 protein (ab164931)

**Please note:** All products are "FOR RESEARCH USE ONLY. NOT FOR USE IN DIAGNOSTIC PROCEDURES"

## Our Abpromise to you: Quality guaranteed and expert technical support

---

- Replacement or refund for products not performing as stated on the datasheet
- Valid for 12 months from date of delivery
- Response to your inquiry within 24 hours
- We provide support in Chinese, English, French, German, Japanese and Spanish
- Extensive multi-media technical resources to help you
- We investigate all quality concerns to ensure our products perform to the highest standards

If the product does not perform as described on this datasheet, we will offer a refund or replacement. For full details of the Abpromise, please visit <https://www.abcam.com/abpromise> or contact our technical team.

## Terms and conditions

---

- Guarantee only valid for products bought direct from Abcam or one of our authorized distributors