

## Product datasheet

# Recombinant human PKM2 protein (Active) ab89364

★★★★★ 1 Abreviews 2 Images

### Overview

<b>Product name</b>	Recombinant human PKM2 protein (Active)
<b>Protein length</b>	Full length protein

### Description

<b>Nature</b>	Recombinant
<b>Source</b>	Escherichia coli
<b>Amino Acid Sequence</b>	
<b>Accession</b>	<a href="#">P14618</a>
<b>Species</b>	Human

<b>Sequence</b>	<p>TARNTGIICT IGPASRSVET LKEMIKSGMN          VARLNFSHGT HEYHAETIKN VRTATESFAS          DPILYRPVAV ALDTKGPEIR TGLIKGSGTA          EVELKKGATL KITLDNAYME KCDENILWLD          YKNICKVVEV GSKIYVDDGL ISLQVKQKGA          DFLVTEVENG GSLGSKKGVN LPGAAVDLPA          VSEKDIQDLK FGVEQDQDMV FASFIRKASD          VHEVRKVLGE KGKNIKIISK IENHEGVRRF          DEILEASDGI MVARGLGIE IPAQKVFLAQ          KMMIGRCNRA GKPVICATQM LESMIKKPRP          TRAEGSDVAN AVLDGADCIM LSGETAKGDY          PLEAVRMQHL IAREAEAAIY HLQLFEELRR          LAPITSDPTE ATAVGAVEAS FKCCSGAIV          LTKSGRSAHQ VARYRPRAPI IAVTRNPQTA          RQAHLRYGIF PVLCKDPVQE AWAEDVDLRV          NFAMNVGKAR GFFKKGDVVI VLTGWRPGSG          FTNTMRVVPV P</p>
-----------------	---

<b>Molecular weight</b>	60 kDa
<b>Amino acids</b>	1 to 531
<b>Tags</b>	His tag N-Terminus
<b>Additional sequence information</b>	(NP_002645)

### Specifications

---

Our [Abpromise guarantee](#) covers the use of **ab89364** in the following tested applications.

The application notes include recommended starting dilutions; optimal dilutions/concentrations should be determined by the end user.

<b>Biological activity</b>	Specific activity: > 25,000 pmol/min/ug. One unit will convert 1.0 pmole of phospho(enol)pyruvate to pyruvate per minute at pH 7.5 at 37C.
<b>Applications</b>	Functional Studies Western blot SDS-PAGE
<b>Endotoxin level</b>	< 1.000 Eu/μg
<b>Purity</b>	> 95 % SDS-PAGE. ab89364 is purified using conventional chromatography techniques.
<b>Form</b>	Liquid
<b>Additional notes</b>	Endotoxin Levels determined by LAL method.

---

## Preparation and Storage

<b>Stability and Storage</b>	Shipped at 4°C. Store at +4°C short term (1-2 weeks). Upon delivery aliquot. Store at -20°C or -80°C. Avoid freeze / thaw cycle. pH: 8.00 Constituents: 0.316% Tris HCl, 10% Glycerol This product is an active protein and may elicit a biological response in vivo, handle with caution.
------------------------------	---

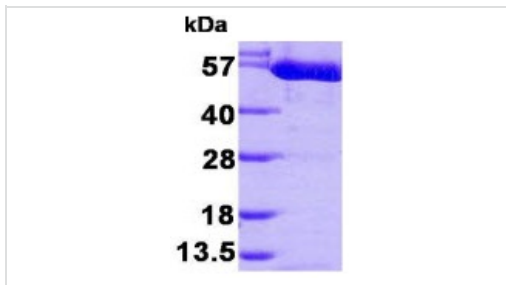
---

## General Info

<b>Function</b>	Glycolytic enzyme that catalyzes the transfer of a phosphoryl group from phosphoenolpyruvate (PEP) to ADP, generating ATP. Stimulates POU5F1-mediated transcriptional activation. Plays a general role in caspase independent cell death of tumor cells. The ratio between the highly active tetrameric form and nearly inactive dimeric form determines whether glucose carbons are channeled to biosynthetic processes or used for glycolytic ATP production. The transition between the 2 forms contributes to the control of glycolysis and is important for tumor cell proliferation and survival.
<b>Tissue specificity</b>	Specifically expressed in proliferating cells, such as embryonic stem cells, embryonic carcinoma cells, as well as cancer cells.
<b>Pathway</b>	Carbohydrate degradation; glycolysis; pyruvate from D-glyceraldehyde 3-phosphate: step 5/5.
<b>Sequence similarities</b>	Belongs to the pyruvate kinase family.
<b>Post-translational modifications</b>	Phosphorylated upon DNA damage, probably by ATM or ATR. ISGylated.
<b>Cellular localization</b>	Cytoplasm. Nucleus. Translocates to the nucleus in response to different apoptotic stimuli. Nuclear translocation is sufficient to induce cell death that is caspase independent, isoform-specific and independent of its enzymatic activity.

---

## Images



3µg of reduced ab89364 on SDS-PAGE, stained with Coomassie Blue.

SDS-PAGE - Recombinant human PKM2 protein (ab89364)



Western blot - Recombinant human PKM2 protein (ab89364)

**Please note:** All products are "FOR RESEARCH USE ONLY. NOT FOR USE IN DIAGNOSTIC PROCEDURES"

### Our Abpromise to you: Quality guaranteed and expert technical support

- Replacement or refund for products not performing as stated on the datasheet
- Valid for 12 months from date of delivery
- Response to your inquiry within 24 hours
- We provide support in Chinese, English, French, German, Japanese and Spanish
- Extensive multi-media technical resources to help you
- We investigate all quality concerns to ensure our products perform to the highest standards

If the product does not perform as described on this datasheet, we will offer a refund or replacement. For full details of the Abpromise, please visit <https://www.abcam.com/abpromise> or contact our technical team.

### Terms and conditions

- Guarantee only valid for products bought direct from Abcam or one of our authorized distributors