

Product datasheet

Recombinant Human PLA1A/NMD protein (denatured)
 ab180288

1 Image

Description

Product name	Recombinant Human PLA1A/NMD protein (denatured)
Purity	> 80 % SDS-PAGE.
Expression system	Escherichia coli
Accession	Q53H76
Protein length	Full length protein
Animal free	No
Nature	Recombinant
Species	Human
Sequence	<p>MGSSHHHHHH SSSLVPRGSH MGSDAPPTPQ PKCADFQSAN LFEGTDLKVQ FLLFVPSNPS CGQLVEGSSD LQNSGFNATL GTKLIHGFR VLGTKPSWID TFIRTLRAT NANVIAVDWI YGSTGVYFSA VKNVIKLSLE ISLFLNLLV LGVSESSIHI IGVSLGAHVG GMVGQLFGGQ LGQITGLDPA GPEYTRASVE ERLDAGDALF VEAHTDTDN LGIRIPVGHV DYFVNGGQDQ PGCPTFFYAG YSYLICDHMR AVHLYISALE NSCPLMAFPC ASYKAFLAGR CLDCFNPFLL SCPRIGLVEQ GGVKIEPLPK EVKVYLLTTS SAPYCMHHSL VEFHLKELRN KDTNIEVTFL SSNITSSSKI TIPKQQRYGK GIAHATPQC QINQVKFKFQ SSNRVWKKDR TTIIGKFCTA LLPVNDREKM VCLPEPVNLQ ASVTVSCDLK IACV</p>
Predicted molecular weight	50 kDa including tags
Amino acids	26 to 456
Tags	His tag N-Terminus
Additional sequence information	Mature form

Specifications

Our [Abpromise guarantee](#) covers the use of **ab180288** in the following tested applications.

The application notes include recommended starting dilutions; optimal dilutions/concentrations should be determined by the end user.

Applications	SDS-PAGE
Form	Liquid
Additional notes	This product was previously labelled as PLA1A

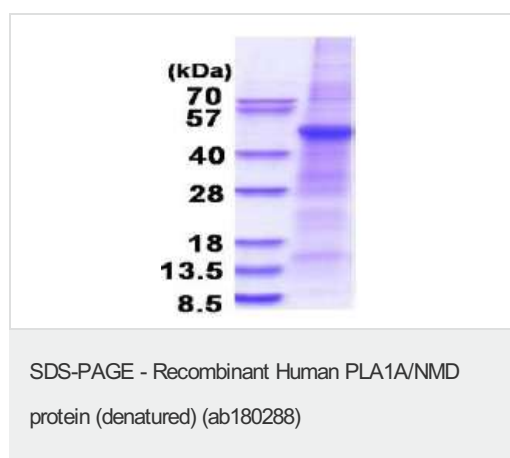
Preparation and Storage

Stability and Storage	Shipped at 4°C. Store at +4°C short term (1-2 weeks). Upon delivery aliquot. Store at -20°C or -80°C. Avoid freeze / thaw cycle. pH: 8.0 Constituents: 0.32% Tris HCl, 2.4% Urea, 10% Glycerol
------------------------------	--

General Info

Function	Hydrolyzes the ester bond at the sn-1 position of glycerophospholipids and produces 2-acyl lysophospholipids. Hydrolyzes phosphatidylserine (PS) in the form of liposomes and 1-acyl-2 lysophosphatidylserine (lyso-PS), but not triolein, phosphatidylcholine (PC), phosphatidylethanolamine (PE), phosphatidic acid (PA) or phosphatidylinositol (PI). Isoform 2 hydrolyzes lyso-PS but not PS. Hydrolysis of lyso-PS in peritoneal mast cells activated by receptors for IgE leads to stimulate histamine production.
Tissue specificity	Widely expressed. Expressed in placenta, prostate and liver. Weakly or not expressed in skin, leukocytes, platelets, colon, spleen, lung, muscle and kidney.
Sequence similarities	Belongs to the AB hydrolase superfamily. Lipase family.
Cellular localization	Secreted.

Images



15% SDS-PAGE (3ug)

Please note: All products are "FOR RESEARCH USE ONLY. NOT FOR USE IN DIAGNOSTIC PROCEDURES"

Our Abpromise to you: Quality guaranteed and expert technical support

- Replacement or refund for products not performing as stated on the datasheet
- Valid for 12 months from date of delivery
- Response to your inquiry within 24 hours

- We provide support in Chinese, English, French, German, Japanese and Spanish
- Extensive multi-media technical resources to help you
- We investigate all quality concerns to ensure our products perform to the highest standards

If the product does not perform as described on this datasheet, we will offer a refund or replacement. For full details of the Abpromise, please visit <https://www.abcam.com/abpromise> or contact our technical team.

Terms and conditions

- Guarantee only valid for products bought direct from Abcam or one of our authorized distributors