

Product datasheet

Recombinant Human PLCL2 protein ab91794

1 Image

Description

Product name	Recombinant Human PLCL2 protein
Expression system	Escherichia coli
Protein length	Protein fragment
Animal free	No
Nature	Recombinant
Species	Human
Sequence	<pre> MRIDSSNMNPQDFWKCGCQVAMNFQTPGLMMDLNIGWF RQNGNCGYVLR PA IMREEVSFFSANTKDSVPGVSPQLLHIKISGQNFPPKPKGS GAKGD VVDPYV YVEIHGIPADCAEQRTKTVHQNGDAPIFDESFEFQINLPEL A MVRFVVLDDD YIGDEFIQYTI PFEC LQTGYRHVPLQSLTGEVLAHAS LFVHVAITNRRGGG KPHKRGLSVRKGKKSREYASLRTLWIKTVDEVFK NAQPPIRDATDLRENMQN AVVSFKELCGLSSVANLMQCMLAVSPRFLG PDNTPLVVLNLSEQYPTMELQG MPEVLKKIVTTYDMMIQSLKALIEN ADAVYEKIVHCQKAAMEFHEHLHSIG TKEGLKERKLQKAVESFTWNIT ILKGQADLLKYAKNETLENLQIHFAAVSC GLNKPGTENADVQKPRRS LEVIPEKANDETGE </pre>
Amino acids	554 to 1001

Specifications

Our [Abpromise guarantee](#) covers the use of **ab91794** in the following tested applications.

The application notes include recommended starting dilutions; optimal dilutions/concentrations should be determined by the end user.

Applications	SDS-PAGE
	Mass Spectrometry
Form	Lyophilized

Additional notes

Protein Identity confirmed by Mass Spectrometry (MS/MS) (acquired on initial reference batch).

Preparation and Storage

Stability and Storage

Shipped at 4°C. Upon delivery aliquot and store at -80°C. Avoid freeze / thaw cycles.

pH: 4.50

Constituents: 0.5% Trehalose, 36% Urea, 1.64% Sodium phosphate, 0.058% Sodium chloride

Reconstitution

Reconstitute with 106 µl aqua dest.

General Info

Function

May play an role in the regulation of Ins(1,4,5)P3 around the endoplasmic reticulum.

Sequence similarities

Contains 1 C2 domain.

Contains 1 PH domain.

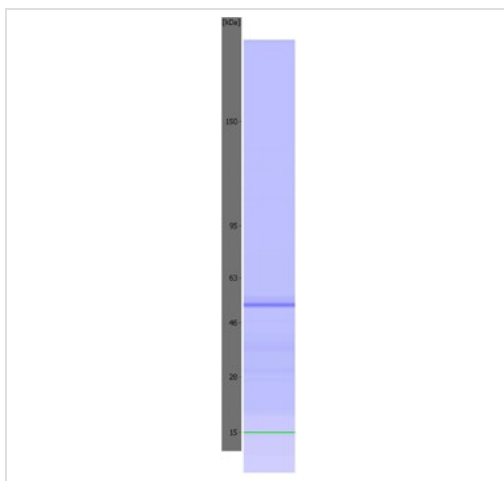
Contains 1 PI-PLC X-box domain.

Contains 1 PI-PLC Y-box domain.

Cellular localization

Cytoplasm. Predominantly localized to perinuclear areas in both myoblast and myotube C2C12 cells.

Images



SDS-PAGE - Recombinant Human PLCL2 protein
(ab91794)

The image shows an electrophoretic assay performed using an Agilent 5100 ALP. In some images coloured control bands can be seen at 15 kDa (green) and/or 240 kDa (purple). The protein-specific band is blue.

Please note: All products are "FOR RESEARCH USE ONLY. NOT FOR USE IN DIAGNOSTIC PROCEDURES"

Our Abpromise to you: Quality guaranteed and expert technical support

- Replacement or refund for products not performing as stated on the datasheet
- Valid for 12 months from date of delivery
- Response to your inquiry within 24 hours

- We provide support in Chinese, English, French, German, Japanese and Spanish
- Extensive multi-media technical resources to help you
- We investigate all quality concerns to ensure our products perform to the highest standards

If the product does not perform as described on this datasheet, we will offer a refund or replacement. For full details of the Abpromise, please visit <https://www.abcam.com/abpromise> or contact our technical team.

Terms and conditions

- Guarantee only valid for products bought direct from Abcam or one of our authorized distributors