

Product datasheet

Recombinant Human POLR3D protein ab157971

1 Image

Overview

Product name	Recombinant Human POLR3D protein
Protein length	Full length protein

Description

Nature	Recombinant
Source	Wheat germ
Amino Acid Sequence	
Species	Human

Sequence	MSEGNAAGEPSTPGGPRPLLTGARGLIGRRPAPPLTP GRLPSIRSRDLTL GGVKKKFTFPNIISRKIKEEPKEEVTVKKEKRERDRDR QREGHGRGRGRP EVIQSHSIFEQGPAEMMKKKGNWDKTVDVSDMGPSHI INIKKEKRETDEE TKQILRMLEKDDFLDDPGLRNDTRNMPVQLPLAHSGW LFKEENDEPDVKP WLAGPKEEDMEVDIPAVKVKEEPRDEEEEEAKMKAPP KAARKTPGLPKDVS VAELLRELSLTKEEELLFLQLPDTLPGQPPTQDIKPIKT EVQGEDGQVVL IKQEKDREAKLAENACTLADLTEGQVGKLLIRKSGRVQ LLLKGVTLDVTM GTACSFLLQELVSVGLGDSRTGEMTVLGHVKHKLVCV PDFESLLDHKHR
-----------------	--

Amino acids	1 to 398
Tags	GST tag N-Terminus

Specifications

Our [Abpromise guarantee](#) covers the use of **ab157971** in the following tested applications.

The application notes include recommended starting dilutions; optimal dilutions/concentrations should be determined by the end user.

Applications	Western blot
---------------------	--------------

	ELISA
Form	Liquid
Additional notes	Protein concentration is above or equal to 0.05 mg/ml.

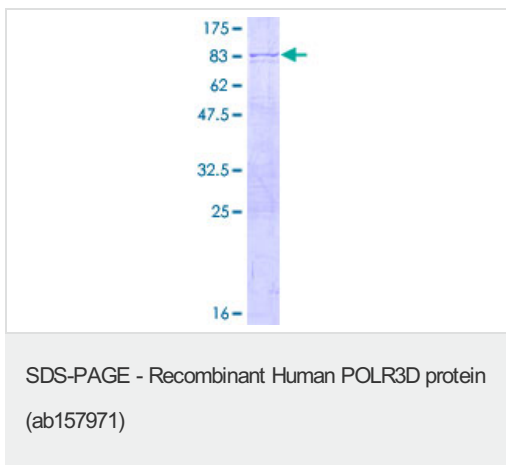
Preparation and Storage

Stability and Storage	Shipped on dry ice. Upon delivery aliquot and store at -80°C. Avoid freeze / thaw cycles. pH: 8.00 Constituents: 0.31% Glutathione, 0.79% Tris HCl
------------------------------	--

General Info

Relevance	POLR3D is a DNA dependent RNA polymerase catalyzes the transcription of DNA into RNA using the four ribonucleoside triphosphates as substrates. It plays a key role in sensing and limiting infection by intracellular bacteria and DNA viruses and acts as nuclear and cytosolic DNA sensor involved in innate immune response.
Cellular localization	Nuclear

Images



ab157971 on a 12.5% SDS-PAGE stained with Coomassie Blue.

Please note: All products are "FOR RESEARCH USE ONLY. NOT FOR USE IN DIAGNOSTIC PROCEDURES"

Our Abpromise to you: Quality guaranteed and expert technical support

- Replacement or refund for products not performing as stated on the datasheet
- Valid for 12 months from date of delivery
- Response to your inquiry within 24 hours
- We provide support in Chinese, English, French, German, Japanese and Spanish
- Extensive multi-media technical resources to help you
- We investigate all quality concerns to ensure our products perform to the highest standards

If the product does not perform as described on this datasheet, we will offer a refund or replacement. For full details of the Abpromise, please visit <https://www.abcam.com/abpromise> or contact our technical team.

Terms and conditions

- Guarantee only valid for products bought direct from Abcam or one of our authorized distributors