

Product datasheet

Recombinant Human POU6F1/Emb protein ab156736

1 Image

Description

<b>Product name</b>	Recombinant Human POU6F1/Emb protein
<b>Purity</b>	> 85 % SDS-PAGE. ab156736 was purified using conventional chromatography techniques.
<b>Expression system</b>	Escherichia coli
<b>Accession</b>	<a href="#">Q14863</a>
<b>Protein length</b>	Full length protein
<b>Animal free</b>	No
<b>Nature</b>	Recombinant
<b>Species</b>	Human
<b>Sequence</b>	<pre> MGSSHHHHHH SSGLVPRGSH MGSMPGISSQ ILTNAQGQVI GTLPWVVNSA SVAAPAPAQS LQVQAVTPQL LLNAQGQVIA TLASSPLPPP VAVRKPSTPE SPAKSEVQPI QPTPTVPQPA VVIASPAPAA KPSASAPIPI TCSETPTVSQ LVSKPHTPSL DEDGINLEEI REFAKNFKIR RLSLGLTQTQ VGQALTATEG PAYSQSAICR FEKLDITPKS AQKLKPVLEK WLNEAELRNQ EGQQNLMEFV GGEPKSKRKR RTSFTPQAIE ALNAYFEKNP LPTGQEITEI AKELNYDREV VRVWF CNRRQ TLKNTSKLNV FQIP </pre>
<b>Predicted molecular weight</b>	35 kDa including tags
<b>Amino acids</b>	1 to 301
<b>Tags</b>	His tag N-Terminus

Specifications

Our [Abpromise guarantee](#) covers the use of **ab156736** in the following tested applications.

The application notes include recommended starting dilutions; optimal dilutions/concentrations should be determined by the end user.

<b>Applications</b>	Mass Spectrometry SDS-PAGE
<b>Mass spectrometry</b>	MALDI-TOF
<b>Form</b>	Liquid

## Additional notes

This product was previously labelled as POU6F1

## Preparation and Storage

### Stability and Storage

Shipped at 4°C. Store at +4°C short term (1-2 weeks). Upon delivery aliquot. Store at -20°C or -80°C. Avoid freeze / thaw cycle.

pH: 8.00

Constituents: 0.02% DTT, 0.32% Tris HCl, 20% Glycerol (glycerin, glycerine), 0.88% Sodium chloride

## General Info

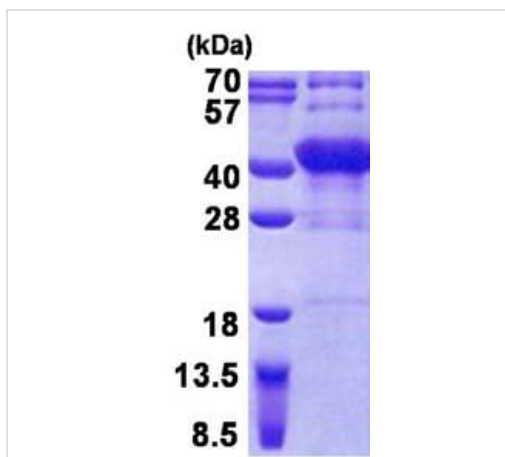
### Relevance

The POU6F1 gene encodes a protein that is part of a family of transcription factors which exhibit distinct temporal and spatial patterns of expression.

### Cellular localization

Nuclear

## Images



15% SDS-PAGE analysis of 3µg ab156736.

SDS-PAGE - Recombinant Human POU6F1/Emb protein (ab156736)

**Please note:** All products are "FOR RESEARCH USE ONLY. NOT FOR USE IN DIAGNOSTIC PROCEDURES"

## Our Abpromise to you: Quality guaranteed and expert technical support

- Replacement or refund for products not performing as stated on the datasheet
- Valid for 12 months from date of delivery
- Response to your inquiry within 24 hours
- We provide support in Chinese, English, French, German, Japanese and Spanish
- Extensive multi-media technical resources to help you

- We investigate all quality concerns to ensure our products perform to the highest standards

If the product does not perform as described on this datasheet, we will offer a refund or replacement. For full details of the Abpromise, please visit <https://www.abcam.com/abpromise> or contact our technical team.

### **Terms and conditions**

---

- Guarantee only valid for products bought direct from Abcam or one of our authorized distributors