

Product datasheet

Recombinant Human PP11 protein ab160260

1 Image

Description

Product name	Recombinant Human PP11 protein	
Expression system	Wheat germ	
Protein length	Protein fragment	
Animal free	No	
Nature	Recombinant	
Species	Human	
Sequence	EGLVDYYSHMDGPWDSYPDVLAMQFNWDGYYKEVGSFAF IGSSPEFEFAL YSLCFIARPGKVCQLSLGGYPLAVRITYTWDKSTYGNKKYI ATAYVSST	
Amino acids	270 to 369	
Tags	GST tag N-Terminus	

Specifications

Our [Abpromise guarantee](#) covers the use of **ab160260** in the following tested applications.

The application notes include recommended starting dilutions; optimal dilutions/concentrations should be determined by the end user.

Applications	ELISA
	Western blot
Form	Liquid

Additional notes

Preparation and Storage

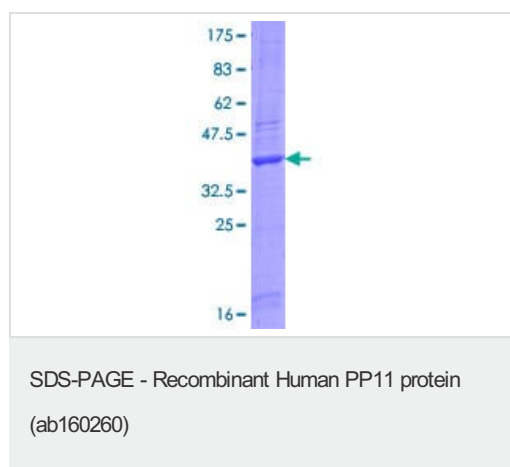
Stability and Storage	Shipped on dry ice. Upon delivery aliquot and store at -80°C. Avoid freeze / thaw cycles. pH: 8.00 Constituents: 0.31% Glutathione, 0.79% Tris HCl
------------------------------	--

General Info

General info

Function	Endoribonuclease that cleaves single-stranded RNAs at uridyates and releases products that have 2'-3'-cyclic phosphate termini.
Tissue specificity	Placental-specific, but also associated with various malignant neoplasms.
Sequence similarities	Belongs to the ENDOU family. Contains 2 SMB (somatomedin-B) domains.
Post-translational modifications	It has been suggested that the active SMB domain may be permitted considerable disulfide bond heterogeneity or variability, thus two alternate disulfide patterns based on 3D structures are described with 1 disulfide bond conserved in both.
Cellular localization	Secreted.

Images



ab160260 on a 12.5% SDS-PAGE stained with Coomassie Blue.

Please note: All products are "FOR RESEARCH USE ONLY. NOT FOR USE IN DIAGNOSTIC PROCEDURES"

Our Abpromise to you: Quality guaranteed and expert technical support

- Replacement or refund for products not performing as stated on the datasheet
- Valid for 12 months from date of delivery
- Response to your inquiry within 24 hours
- We provide support in Chinese, English, French, German, Japanese and Spanish
- Extensive multi-media technical resources to help you
- We investigate all quality concerns to ensure our products perform to the highest standards

If the product does not perform as described on this datasheet, we will offer a refund or replacement. For full details of the Abpromise, please visit <https://www.abcam.com/abpromise> or contact our technical team.

Terms and conditions

- Guarantee only valid for products bought direct from Abcam or one of our authorized distributors