

Product datasheet

Recombinant Human PRDC protein ab163828

1 Image

Description

Product name	Recombinant Human PRDC protein	
Expression system	Wheat germ	
Protein length	Full length protein	
Animal free	No	
Nature	Recombinant	
Species	Human	
Sequence	MFWKLSLSLFMVAVLVKVAEARKNRPAGAIHSPYKDG SSNNSERWQHQIK EVLASSQEALVVTERKYLKSDWCKTQPLRQTVSEEG CRSRTLNRFCGGQ CNSFYIPRHVKKEEESFQSCAFCKPQRVTSVLVELEC PGLDPPFRLKKIQ KVKQCRCMSVNLSDSDKQ	
Amino acids	1 to 168	
Tags	GST tag N-Terminus	

Specifications

Our [Abpromise guarantee](#) covers the use of **ab163828** in the following tested applications.

The application notes include recommended starting dilutions; optimal dilutions/concentrations should be determined by the end user.

Applications	Western blot ELISA
Form	Liquid
Additional notes	This product was previously labelled as GREM2.

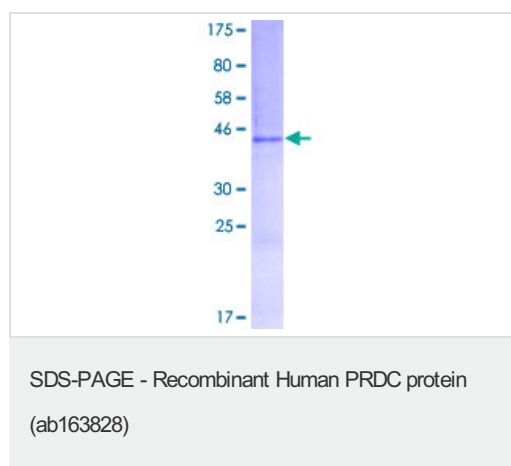
Preparation and Storage

Stability and Storage	Shipped on dry ice. Upon delivery aliquot and store at -80°C. Avoid freeze / thaw cycles. pH: 8.00 Constituents: 0.31% Glutathione, 0.79% Tris HCl
------------------------------	--

General Info

Function	Cytokine that inhibits the activity of BMP2 and BMP4 in a dose-dependent manner. Antagonized BMP4-induced suppression of progesterone production in granulosa cells.
Sequence similarities	Belongs to the DAN family. Contains 1 CTCK (C-terminal cystine knot-like) domain.
Cellular localization	Secreted.

Images



ab163828 on a 12.5% SDS-PAGE stained with Coomassie Blue.

Please note: All products are "FOR RESEARCH USE ONLY. NOT FOR USE IN DIAGNOSTIC PROCEDURES"

Our Abpromise to you: Quality guaranteed and expert technical support

- Replacement or refund for products not performing as stated on the datasheet
- Valid for 12 months from date of delivery
- Response to your inquiry within 24 hours
- We provide support in Chinese, English, French, German, Japanese and Spanish
- Extensive multi-media technical resources to help you
- We investigate all quality concerns to ensure our products perform to the highest standards

If the product does not perform as described on this datasheet, we will offer a refund or replacement. For full details of the Abpromise, please visit <https://www.abcam.com/abpromise> or contact our technical team.

Terms and conditions

- Guarantee only valid for products bought direct from Abcam or one of our authorized distributors