

Product datasheet

Recombinant Human Proteasome 20S C2/HC2 protein
ab116156

1 Image

Description

Product name	Recombinant Human Proteasome 20S C2/HC2 protein	
Purity	> 95 % SDS-PAGE. ab116156 is purified using conventional chromatography techniques.	
Expression system	Escherichia coli	
Accession	P25786	
Protein length	Full length protein	
Animal free	No	
Nature	Recombinant	
Species	Human	
Sequence	MGSSHHHHHH SSGLVPRGSH MGSMFRNQYD NDVTWVSPQG RIHQIEYAME AVKQGSATVG LKSKTHAVLV ALKRAQSELA AHQKKILHVD NHIGISIAGL TADARLLCNF MRQECLDSRF VFDRPLPVS LVSLIGSKTQ IPTQRYGRRP YGVGLLIAGY DDMGPHIFQT CPSANYFDCR AMSIGARSQS ARTYLERHMS EFMECNLNEL VKHGLRALRE TLPAEQDLTT KNVSIQVIGK DLEFTYDDD DVSPFLEGLE ERPQRKAQPA QPADEPAEKA DEPMEH	
Predicted molecular weight	32 kDa including tags	
Amino acids	1 to 263	
Tags	His tag N-Terminus	

Specifications

Our [Abpromise guarantee](#) covers the use of **ab116156** in the following tested applications.

The application notes include recommended starting dilutions; optimal dilutions/concentrations should be determined by the end user.

Applications	Mass Spectrometry SDS-PAGE
Mass spectrometry	MALDI-TOF
Form	Liquid

Additional notes

This product was previously labelled as Proteasome 20S C2

Preparation and Storage

Stability and Storage

Shipped at 4°C. Store at +4°C short term (1-2 weeks). Upon delivery aliquot. Store at -20°C or -80°C. Avoid freeze / thaw cycle.

pH: 8.00

Constituents: 0.03% DTT, 0.32% Tris HCl, 10% Glycerol (glycerin, glycerine), 0.88% Sodium chloride

General Info

Function

The proteasome is a multicatalytic proteinase complex which is characterized by its ability to cleave peptides with Arg, Phe, Tyr, Leu, and Glu adjacent to the leaving group at neutral or slightly basic pH. The proteasome has an ATP-dependent proteolytic activity. Mediates the lipopolysaccharide-induced signal transduction in the macrophage proteasome (By similarity). Might be involved in the anti-inflammatory response of macrophages during the interaction with *C.albicans* heat-inactivated cells.

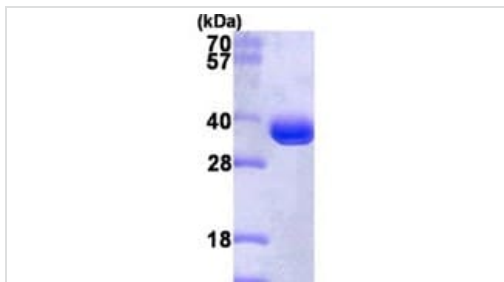
Sequence similarities

Belongs to the peptidase T1A family.

Cellular localization

Cytoplasm. Nucleus.

Images



15% SDS-PAGE showing ab116156 at approximately 32 kDa (3µg).

SDS-PAGE - Recombinant Human Proteasome 20S
C2/HC2 protein (ab116156)

Please note: All products are "FOR RESEARCH USE ONLY. NOT FOR USE IN DIAGNOSTIC PROCEDURES"

Our Abpromise to you: Quality guaranteed and expert technical support

- Replacement or refund for products not performing as stated on the datasheet
- Valid for 12 months from date of delivery
- Response to your inquiry within 24 hours
- We provide support in Chinese, English, French, German, Japanese and Spanish

- Extensive multi-media technical resources to help you
- We investigate all quality concerns to ensure our products perform to the highest standards

If the product does not perform as described on this datasheet, we will offer a refund or replacement. For full details of the Abpromise, please visit <https://www.abcam.com/abpromise> or contact our technical team.

Terms and conditions

- Guarantee only valid for products bought direct from Abcam or one of our authorized distributors