

Product datasheet

Recombinant Human Protein kinase-like protein SgK493 ab164858

1 Image

Overview

Product name	Recombinant Human Protein kinase-like protein SgK493
Protein length	Full length protein

Description

Nature	Recombinant
Source	Wheat germ
Amino Acid Sequence	
Species	Human
Sequence	<p>MVLLERLRHPNVLQLYGYCYQDSEDIPDTLTTITELGAP VEMIQLLQTSW EDRFRICLSLGRLLHHLAHSPLGSVTLLDFRPRQFVLV DGELKVTDLDDA RVEETPCAGSTDCILEFPARNFTLPCSAQGWCEGMN EKRNLYNAYRFFFT YLLPHSAPPSLRPLLDIVNATGELAWGVDETLAQLEK VLHLYRSGQYLQ NSTASSSTEYQCIPDSTIPQEDYRCWPSYHHGSCLLSV FNLAEAVDVCES HAQCRAFVVTNQTTWTGRQLVFFKTGWSQVVPDPNK TTYVKASG</p>
Amino acids	1 to 294
Tags	GST tag N-Terminus

Specifications

Our [Abpromise guarantee](#) covers the use of **ab164858** in the following tested applications. The application notes include recommended starting dilutions; optimal dilutions/concentrations should be determined by the end user.

Applications	Western blot ELISA
Form	Liquid

Additional notes

Protein concentration is above or equal to 0.05 mg/ml.

Preparation and Storage**Stability and Storage**

Shipped on dry ice. Upon delivery aliquot and store at -80°C. Avoid freeze / thaw cycles.

pH: 8.00

Constituents: 0.31% Glutathione, 0.79% Tris HCl

General Info**Function**

Protein kinase which is required for longitudinal bone growth through regulation of chondrocyte differentiation. Involved in protein transport from the Golgi apparatus to the plasma membrane.

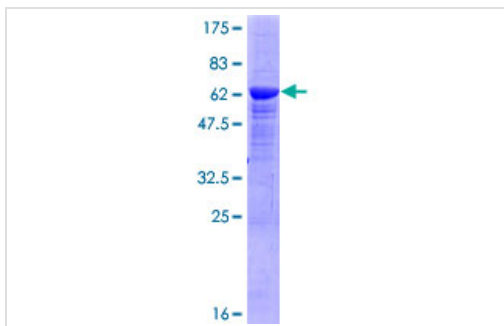
Sequence similarities

Belongs to the protein kinase superfamily.

Contains 1 protein kinase domain.

Cellular localization

Golgi apparatus.

Images

ab164858 on a 12.5% SDS-PAGE stained with Coomassie Blue.

SDS-PAGE - Recombinant Human Protein kinase-like protein Sgk493 (ab164858)

Please note: All products are "FOR RESEARCH USE ONLY AND ARE NOT INTENDED FOR DIAGNOSTIC OR THERAPEUTIC USE"

Our Abpromise to you: Quality guaranteed and expert technical support

- Replacement or refund for products not performing as stated on the datasheet
- Valid for 12 months from date of delivery
- Response to your inquiry within 24 hours
- We provide support in Chinese, English, French, German, Japanese and Spanish
- Extensive multi-media technical resources to help you
- We investigate all quality concerns to ensure our products perform to the highest standards

If the product does not perform as described on this datasheet, we will offer a refund or replacement. For full details of the Abpromise, please visit <https://www.abcam.com/abpromise> or contact our technical team.

Terms and conditions

- Guarantee only valid for products bought direct from Abcam or one of our authorized distributors