

## Product datasheet

# Recombinant Human Protein phosphatase 1 inhibitor subunit 2 ab174425

1 Image

### Description

<b>Product name</b>	Recombinant Human Protein phosphatase 1 inhibitor subunit 2
<b>Purity</b>	> 85 % SDS-PAGE. ab174425 is purified by using anion-exchange chromatography (DEAE sepharose resin) and gel-filtration chromatography (Sephacryl S-200) with 20mM Tris pH 7.5, 2mM EDTA.
<b>Expression system</b>	Escherichia coli
<b>Accession</b>	<a href="#">NP_006232</a>
<b>Protein length</b>	Protein fragment
<b>Animal free</b>	No
<b>Nature</b>	Recombinant
<b>Species</b>	Human
<b>Sequence</b>	<pre> MGSSHHHHHH SSGLVPRGSH MGSMAASTAS HRPIKGILKN KTSTTSSMVA SAEQPRGNVD EELSKKSQKW DEMNILATYH PADKDYGLMK IDEPSTPYHS MMGDDEDACS DTEATEAMAP DILARKLAAA EGGLEPKYRIQ EQESSGEEDS DLSPEEREKK RQFEMKRKLH YNEGLNIKLA RQLISKDLH </pre>
<b>Predicted molecular weight</b>	21 kDa including tags
<b>Amino acids</b>	1 to 166
<b>Tags</b>	His tag N-Terminus

### Specifications

Our [Abpromise guarantee](#) covers the use of **ab174425** in the following tested applications.

The application notes include recommended starting dilutions; optimal dilutions/concentrations should be determined by the end user.

<b>Applications</b>	Mass Spectrometry SDS-PAGE
<b>Mass spectrometry</b>	MALDI-TOF
<b>Form</b>	Liquid

## Preparation and Storage

### Stability and Storage

Shipped at 4°C. Store at +4°C short term (1-2 weeks). Upon delivery aliquot. Store at -20°C or -80°C. Avoid freeze / thaw cycle.

pH: 8.00

Constituents: 0.32% Tris HCl, 30% Glycerol (glycerin, glycerine), 0.88% Sodium chloride, 0.02% DTT

## General Info

### Function

Inhibitor of protein-phosphatase 1.

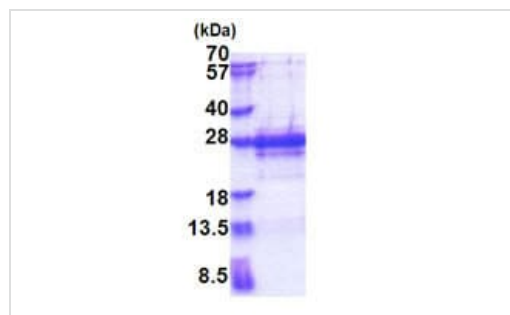
### Sequence similarities

Belongs to the protein phosphatase inhibitor 2 family.

### Post-translational modifications

Phosphorylation on Thr-73 by GSK3 activates PP1 by dissociating the PP1-PPP1R2 complex (By similarity). Phosphorylation on Ser-44 by ATM activates PP1 by dissociating the PP1-PPP1R2 complex.

## Images



SDS-PAGE analysis of ab174425 on 15% SDS-PAGE gel (3µg).

SDS-PAGE - Recombinant Human Protein  
phosphatase 1 inhibitor subunit 2 (ab174425)

**Please note:** All products are "FOR RESEARCH USE ONLY. NOT FOR USE IN DIAGNOSTIC PROCEDURES"

## Our Abpromise to you: Quality guaranteed and expert technical support

- Replacement or refund for products not performing as stated on the datasheet
- Valid for 12 months from date of delivery
- Response to your inquiry within 24 hours
- We provide support in Chinese, English, French, German, Japanese and Spanish
- Extensive multi-media technical resources to help you
- We investigate all quality concerns to ensure our products perform to the highest standards

If the product does not perform as described on this datasheet, we will offer a refund or replacement. For full details of the Abpromise, please visit <https://www.abcam.com/abpromise> or contact our technical team.

## Terms and conditions

---

- Guarantee only valid for products bought direct from Abcam or one of our authorized distributors