

Product datasheet

Recombinant Human PRSS33 protein ab166095

1 Image

Overview

Product name	Recombinant Human PRSS33 protein
Protein length	Full length protein

Description

Nature	Recombinant
Source	Wheat germ
Amino Acid Sequence	
Species	Human
Sequence	<p>MRGVSCLQVLLLLVLGAAGTQGRKSAACGQPRMSSRI VGGRDGRDGEWPW QASIQHRGAHVCGGSLIAPQWVLTAAHCFRRALPAE YRVRLGALRLGST SPRTLSPVRRVLLPPDYSEDGARGDLALLQLRRPVP LSARVQPVCLPVP GARPPPGTPCRVTGWGSLRPGVPLPEWRPLQGVRV PLLDSRTC DGLYHVG ADVPQAERMLPGSLCAGYPQGHKDACQGDSGGPLT CLQSGSWVLVGVVS WGKGCALPNRPGVYTSVATYSPWIQARVSF</p>
Amino acids	1 to 280
Tags	GST tag N-Terminus

Specifications

Our [Abpromise guarantee](#) covers the use of **ab166095** in the following tested applications.

The application notes include recommended starting dilutions; optimal dilutions/concentrations should be determined by the end user.

Applications	ELISA Western blot
Form	Liquid
Additional notes	Protein concentration is above or equal to 0.05 mg/ml.

Preparation and Storage

Stability and Storage

Shipped on dry ice. Upon delivery aliquot and store at -80°C. Avoid freeze / thaw cycles.

pH: 8.00

Constituents: 0.31% Glutathione, 0.79% Tris HCl

General Info

Function

Serine protease that has amidolytic activity, cleaving its substrates before Arg residues.

Tissue specificity

Predominantly expressed in macrophages. Present in the spleen, small and large intestine, lung and brain (at protein level). Highly expressed in peripheral leukocytes, ovary, retina, spleen and stomach. Moderately expressed in thymus, uterus and platelets, as well as some brain tissues, such as thalamus and fetal brain.

Sequence similarities

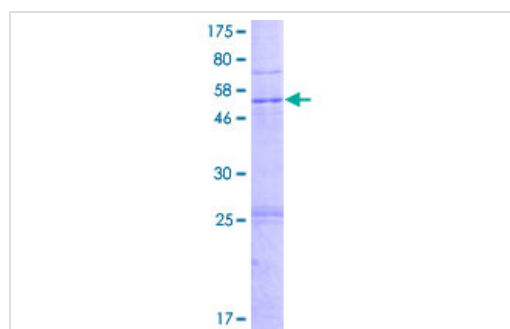
Belongs to the peptidase S1 family.

Contains 1 peptidase S1 domain.

Cellular localization

Secreted.

Images



ab166095 on a 12.5% SDS-PAGE stained with Coomassie Blue.

SDS-PAGE - Recombinant Human PRSS33 protein
(ab166095)

Please note: All products are "FOR RESEARCH USE ONLY AND ARE NOT INTENDED FOR DIAGNOSTIC OR THERAPEUTIC USE"

Our Abpromise to you: Quality guaranteed and expert technical support

- Replacement or refund for products not performing as stated on the datasheet
- Valid for 12 months from date of delivery
- Response to your inquiry within 24 hours

- We provide support in Chinese, English, French, German, Japanese and Spanish
- Extensive multi-media technical resources to help you
- We investigate all quality concerns to ensure our products perform to the highest standards

If the product does not perform as described on this datasheet, we will offer a refund or replacement. For full details of the Abpromise, please visit <https://www.abcam.com/abpromise> or contact our technical team.

Terms and conditions

- Guarantee only valid for products bought direct from Abcam or one of our authorized distributors