

Product datasheet

Recombinant Human PTGER3 protein ab159274

1 Image

Description

<b>Product name</b>	Recombinant Human PTGER3 protein
<b>Expression system</b>	Wheat germ
<b>Protein length</b>	Full length protein
<b>Animal free</b>	No
<b>Nature</b>	Recombinant
<b>Species</b>	Human
<b>Sequence</b>	<p>MKETRGYGGDAPFCRLNHSYTMWAPERSAARGN  LTRPPGSGEDCGSV  SVAFPITMLLTGFVGNALAMLLVSRSYRRRESKRKKSF  LLCIGWLALTDL  VGQLLTTPVVIVVYLSKQRWEHIDPSGRLCTFFGLTMT  VFGLSSLFIASA  MAVERALAIRAPHWYASHMKTRATRAVLLGVWLAVLA  FALLPVLGVGQYT  VQWPGTWCFISTGRGGNGTSSSHNWGNLFFASAF  LGLLALTVTFSCNL  ATIKALVSRCAKATASQSSAQWGRITTEAIQLMGIMC  VLSVCWSPLLI  MMLKMIFNQTSVEHCKTHTEKQKECNFFLIAVRLASLN  QILDPWVYLLLR  KILLRKFCQVANAVSSCSNDGQKGQPISLSNEIIQTEA</p>
<b>Amino acids</b>	1 to 388
<b>Tags</b>	GST tag N-Terminus

Specifications

Our [Abpromise guarantee](#) covers the use of **ab159274** in the following tested applications.

The application notes include recommended starting dilutions; optimal dilutions/concentrations should be determined by the end user.

<b>Applications</b>	ELISA Western blot
<b>Form</b>	Liquid
<b>Additional notes</b>	Protein concentration is above or equal to 0.05 mg/ml.

## Preparation and Storage

---

### Stability and Storage

Shipped on dry ice. Upon delivery aliquot and store at -80°C. Avoid freeze / thaw cycles.

pH: 8.00

Constituents: 0.31% Glutathione, 0.79% Tris HCl

## General Info

---

### Function

Receptor for prostaglandin E2 (PGE2); the EP3 receptor may be involved in inhibition of gastric acid secretion, modulation of neurotransmitter release in central and peripheral neurons, inhibition of sodium and water reabsorption in kidney tubulus and contraction in uterine smooth muscle. The activity of this receptor can couple to both the inhibition of adenylate cyclase mediated by G-I proteins, and to an elevation of intracellular calcium. The various isoforms have identical ligand binding properties but can interact with different second messenger systems.

### Tissue specificity

Expressed in small intestine, heart, pancreas, gastric fundic mucosa, mammary artery and pulmonary vessels.

### Sequence similarities

Belongs to the G-protein coupled receptor 1 family.

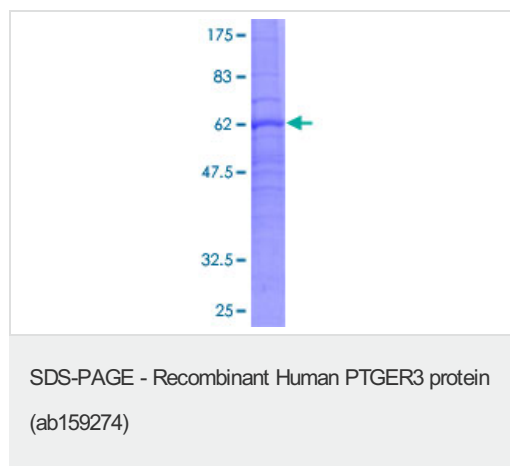
### Cellular localization

Cell membrane.

---

## Images

---



ab159274 on a 12.5% SDS-PAGE stained with Coomassie Blue.

**Please note:** All products are "FOR RESEARCH USE ONLY. NOT FOR USE IN DIAGNOSTIC PROCEDURES"

## Our Abpromise to you: Quality guaranteed and expert technical support

---

- Replacement or refund for products not performing as stated on the datasheet
- Valid for 12 months from date of delivery
- Response to your inquiry within 24 hours
- We provide support in Chinese, English, French, German, Japanese and Spanish
- Extensive multi-media technical resources to help you
- We investigate all quality concerns to ensure our products perform to the highest standards

If the product does not perform as described on this datasheet, we will offer a refund or replacement. For full details of the Abpromise, please visit <https://www.abcam.com/abpromise> or contact our technical team.

## Terms and conditions

---

- Guarantee only valid for products bought direct from Abcam or one of our authorized distributors