

Product datasheet

Recombinant Human PTP4A3/PRL-R protein ab87716

2 Images

Description

Product name	Recombinant Human PTP4A3/PRL-R protein
Purity	> 95 % SDS-PAGE. ab87716 is purified using conventional chromatography techniques. Endotoxin: < 1.0 EU per 1 microgram of protein (determined by LAL method).
Expression system	Escherichia coli
Protein length	Full length protein
Animal free	No
Nature	Recombinant
Species	Human
Sequence	<p>MGSSHHHHHH SSGLVPRGSH MARMNRPAPV EVSYKHMRFI ITHNPTNATL STFIEDLKKY GATTVVRVCE VTYDKTPLEK DGITVVDWPF DDGAPPPGKV VEDWLSLVKA KFCEAPGSCV AVHCVAGLGR APVLVALALI ESGMKYEDAI QFIRQRRGA INSKQLTYLE KYRPKQRLRF KDPHTHKTRC CVM</p>

Specifications

Our [Abpromise guarantee](#) covers the use of **ab87716** in the following tested applications.

The application notes include recommended starting dilutions; optimal dilutions/concentrations should be determined by the end user.

Applications	SDS-PAGE Western blot
Form	Liquid
Additional notes	Previously labelled as PTP4A3.

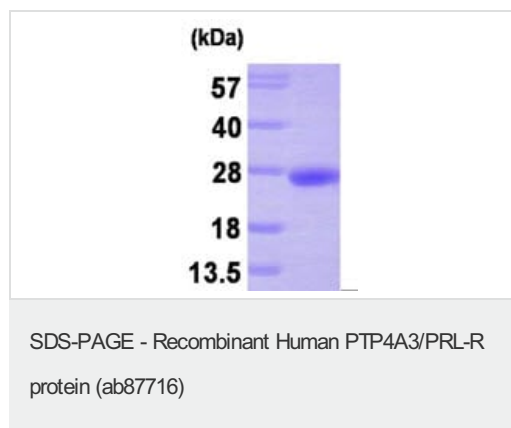
Preparation and Storage

Stability and Storage	Shipped at 4°C. Upon delivery aliquot and store at -20°C or -80°C. Avoid repeated freeze / thaw cycles. pH: 8.00 Constituents: 0.0154% DTT, 0.316% Tris HCl, 10% Glycerol (glycerin, glycerine)
------------------------------	---

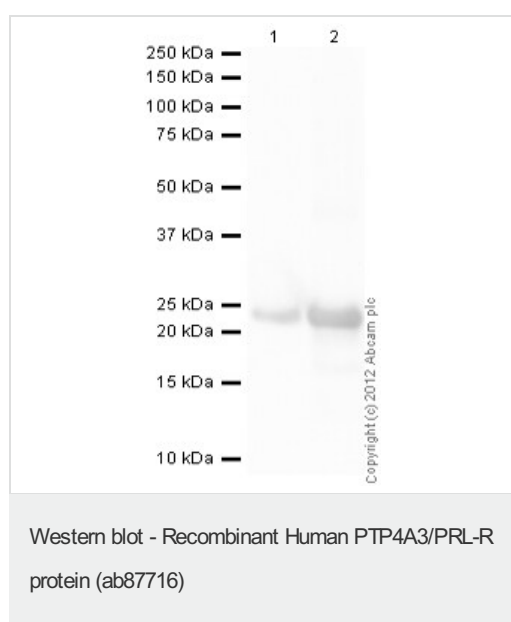
General Info

Function	Protein tyrosine phosphatase which stimulates progression from G1 into S phase during mitosis. Enhances cell proliferation, cell motility and invasive activity, and promotes cancer metastasis. May be involved in the progression of cardiac hypertrophy by inhibiting intracellular calcium mobilization in response to angiotensin II.
Tissue specificity	Mainly expressed in cardiomyocytes and skeletal muscle; also found in pancreas. Consistently overexpressed in colon cancer metastasis.
Sequence similarities	Belongs to the protein-tyrosine phosphatase family. Contains 1 tyrosine-protein phosphatase domain.
Post-translational modifications	Farnesylated. Farnesylation is required for membrane targeting.
Cellular localization	Cell membrane. Early endosome.

Images



15% SDS-PAGE showing ab87716 at approximately 21.6kDa (3µg).



All lanes : Anti-PTP4A3/PRL-R antibody ([ab82568](#)) at 1 µg/ml

Lane 1 : Recombinant Human PTP4A3/PRL-R protein (ab87716) at 0.01 µg

Lane 2 : Recombinant Human PTP4A3/PRL-R protein (ab87716) at 0.1 µg

Secondary

All lanes : Goat Anti-Rabbit IgG H&L (HRP) preadsorbed ([ab97080](#)) at 1/5000 dilution

Developed using the ECL technique.

Performed under reducing conditions.

Exposure time: 20 seconds

Please note: All products are "FOR RESEARCH USE ONLY. NOT FOR USE IN DIAGNOSTIC PROCEDURES"

Our Abpromise to you: Quality guaranteed and expert technical support

- Replacement or refund for products not performing as stated on the datasheet
- Valid for 12 months from date of delivery
- Response to your inquiry within 24 hours

- We provide support in Chinese, English, French, German, Japanese and Spanish
- Extensive multi-media technical resources to help you
- We investigate all quality concerns to ensure our products perform to the highest standards

If the product does not perform as described on this datasheet, we will offer a refund or replacement. For full details of the Abpromise, please visit <https://www.abcam.com/abpromise> or contact our technical team.

Terms and conditions

- Guarantee only valid for products bought direct from Abcam or one of our authorized distributors