

Product datasheet

Recombinant Human RAB11FIP1 protein ab132417

1 Image

Description

<b>Product name</b>	Recombinant Human RAB11FIP1 protein
<b>Expression system</b>	Wheat germ
<b>Accession</b>	<a href="#">Q6WKZ4</a>
<b>Protein length</b>	Protein fragment
<b>Animal free</b>	No
<b>Nature</b>	Recombinant
<b>Species</b>	Human
<b>Sequence</b>	<p>                     MGRTRGTGTEKNTSSLELEESLPEQPETGRQEEELPRFP                      CKKQDYSPSSG                      EAQEVPFALSLSSDGAVSPVGELAAGGDRDLESQAGSL                      VESKARDAEEV                      APPLPMGASVPSIDSMRKL EEMGLNLRKDQKTKKRVS                      FSEQLFTEEAV                      AGAALLVEGHSSCPQELNPAWSVAGNASDGEPPESPHA                      EDSERESVTTPG                      PATCGAPASPADHLLLPSQEESFSEVPMSEASSAKDTPL                      FRMEGEDALVT                      QYQSKASDHEGLLSDPLSDLQLVSDFKSPIMADLNLSLPS                      IPEVASDDER                      IDQVEDDGDQVEDDGETAKSSTLDIGALSLGLVPCPER                      GKGPSGEADRL                      VLGEGLCDFRLQAPQASVTAPSEQTTEFGIHKPHLGKSSS                      LDKQLPGPSG                      GEEKPMGNGSPSPPPGTSLDNPVSPSPSEIFPVTHSF                      PSSAHS DTHHT                      STAESQKKATAEGSAGRVENFGKRKPLLQAWVSPSETH                      PVSAQPGAGTGS                      AKHRLHPVKPMNAMATKVANCSLGTATIISENLNNEVMMK                      KYSPSDPAFA                      YAQLTHDELIQLVLKQKETISKKEFQVRELEDYIDNLLVRVM                      EETPNILR IPTQVGKKAGKM                 </p>
<b>Predicted molecular weight</b>	92 kDa including tags
<b>Amino acids</b>	672 to 1283

## Specifications

---

Our [Abpromise guarantee](#) covers the use of **ab132417** in the following tested applications.

The application notes include recommended starting dilutions; optimal dilutions/concentrations should be determined by the end user.

**Applications** SDS-PAGE  
Western blot  
ELISA

**Form** Liquid

**Additional notes**

## Preparation and Storage

---

**Stability and Storage** Shipped on dry ice. Upon delivery aliquot and store at -80°C. Avoid freeze / thaw cycles.  
pH: 8.00  
Constituents: 0.31% Glutathione, 0.79% Tris HCl

## General Info

---

**Function** A Rab11 effector protein involved in the endosomal recycling process. Also involved in controlling membrane trafficking along the phagocytic pathway and in phagocytosis.

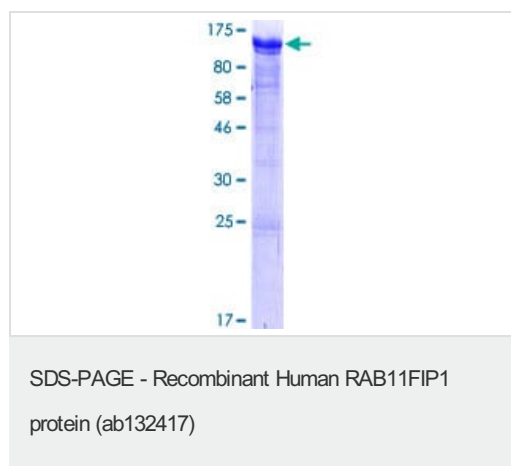
**Tissue specificity** Isoform 2 is expressed in brain, heart, testis, lung, spleen, ovary and small intestine.

**Sequence similarities** Contains 1 C2 domain.  
Contains 1 FIP-RBD domain.

**Cellular localization** Recycling endosome. Rab11A rather than Rab4A mediates localization in the endocytic recycling compartment (ERC) and Cytoplasmic vesicle, phagosome membrane. Membrane-bound (isoform 2). Colocalizes with Rab11A at phagosomes (isoform 2).

## Images

---



12.5% SDS-PAGE analysis of ab132417, stained with Coomassie Blue.

**Please note:** All products are "FOR RESEARCH USE ONLY. NOT FOR USE IN DIAGNOSTIC PROCEDURES"

## **Our Abpromise to you: Quality guaranteed and expert technical support**

---

- Replacement or refund for products not performing as stated on the datasheet
- Valid for 12 months from date of delivery
- Response to your inquiry within 24 hours
  
- We provide support in Chinese, English, French, German, Japanese and Spanish
- Extensive multi-media technical resources to help you
- We investigate all quality concerns to ensure our products perform to the highest standards

If the product does not perform as described on this datasheet, we will offer a refund or replacement. For full details of the Abpromise, please visit <https://www.abcam.com/abpromise> or contact our technical team.

## **Terms and conditions**

---

- Guarantee only valid for products bought direct from Abcam or one of our authorized distributors