

Product datasheet

Recombinant Human RAB2B protein ab116205

1 Image

Description

Product name	Recombinant Human RAB2B protein	
Purity	> 95 % SDS-PAGE. ab116205 was purified using conventional chromatography techniques.	
Expression system	Escherichia coli	
Accession	Q8WUD1	
Protein length	Full length protein	
Animal free	No	
Nature	Recombinant	
Species	Human	
Sequence	MGSSHHHHHSSGLVPRGSHMGSHMTYAYLFKYIIIGDTGV GKSCLLLQF TDKRFQPVHDLTIGVEFGARMVNIDGKQIKLQWDTAGQES FRSITRSYY RGAAGALLVYDITRRETFNHLTSWLEDARQHSSSNMVIMLI GNKSDLESR RDVKREEGEAFAREHGLIFMETS AKTACNVEEAFINTAKEI YRKIQQGLF DVHNEANGIKIGPQQSISTSVGPSASQRNSRDIGSNSGCC	
Predicted molecular weight	27 kDa including tags	
Amino acids	1 to 216	
Tags	His tag N-Terminus	

Specifications

Our [Abpromise guarantee](#) covers the use of **ab116205** in the following tested applications.

The application notes include recommended starting dilutions; optimal dilutions/concentrations should be determined by the end user.

Applications	Mass Spectrometry SDS-PAGE
Mass spectrometry	MALDI-TOF
Form	Liquid

Preparation and Storage

Stability and Storage

Shipped at 4°C. Store at +4°C short term (1-2 weeks). Upon delivery aliquot. Store at -20°C or -80°C. Avoid freeze / thaw cycle.

pH: 8.00

Constituents: 0.02% DTT, 0.32% Tris HCl, 10% Glycerol (glycerin, glycerine), 0.88% Sodium chloride

General Info

Function

Required for protein transport from the endoplasmic reticulum to the Golgi complex.

Tissue specificity

Expressed in kidney, prostate, lung, liver, thymus, colon, pancreas, and skeletal muscle, and low levels in placenta. Not detected in heart, brain, spleen, testis, ovary, small intestine and leukocyte.

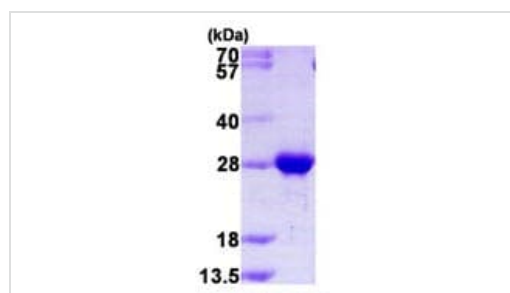
Sequence similarities

Belongs to the small GTPase superfamily. Rab family.

Cellular localization

Cell membrane. Endoplasmic reticulum membrane. Golgi apparatus membrane.

Images



15% SDS-PAGE analysis of 3 µg ab116205.

SDS-PAGE - Recombinant Human RAB2B protein
(ab116205)

Please note: All products are "FOR RESEARCH USE ONLY. NOT FOR USE IN DIAGNOSTIC PROCEDURES"

Our Abpromise to you: Quality guaranteed and expert technical support

- Replacement or refund for products not performing as stated on the datasheet
- Valid for 12 months from date of delivery
- Response to your inquiry within 24 hours
- We provide support in Chinese, English, French, German, Japanese and Spanish
- Extensive multi-media technical resources to help you
- We investigate all quality concerns to ensure our products perform to the highest standards

If the product does not perform as described on this datasheet, we will offer a refund or replacement. For full details of the Abpromise, please visit <https://www.abcam.com/abpromise> or contact our technical team.

Terms and conditions

- Guarantee only valid for products bought direct from Abcam or one of our authorized distributors