

Product datasheet

Recombinant Human RABGAP1 protein ab161730

1 References 1 Image

Overview

Product name	Recombinant Human RABGAP1 protein
Protein length	Full length protein

Description

Nature	Recombinant
Source	Wheat germ
Amino Acid Sequence	
Species	Human

Sequence	<p>MDDQPGEKELVKRSQLDGEEDGPLSNQLSASSTINP VPLVGLQKPEMSLP VKPGQGDSEASSPFTPVADEDSVVFSLKTYLGCASV NAPRSEVEALRMMS ILRSQCQISLDVTLSPVNVSEGMRLLDLPQTNTEIANYPY KILFCVRGH DGTPESDCFAFTESHYNAELFRIHVFRCEIQEAVSRILY SFATAFRRSAK QTPLSATAAPQTPDSDIFTFSVSLEIKEDDGKGYFSAV PKDKDRQCFLR QGIDKKVIYVQTTNKEIAIERCFGLLLSPGKDVRNSD MHLLDLESMGK SSDGKSYVITGSWNPKSPHFQVVNEETPKDKVLFMTT AVDLVITEVQEPV RFLLETKVRVCSPNERLFWPFSKRSTTENFFLKLKQIK QRERKNNTDTLY EVVCLSESERERRKTTASPSVRLPQSGSQSSVIPSP PEDDEEEDNDEPL LSGSGDVSKECAEKILETWGELLSKWHLNLNVRPKQL SSLVRNGVPEALR GEVWQLLAGCHNNDHLVEKYRILITKESPDQSAITRDIN RTFPAHDYFKD TGGDGQDSLKICKAYSVDDEEIGYCQGSFLAAVLLL HMPEEQAFSVLV KIMFDYGLRELFKQNFEDLHCKFYQLERLMQEYIPDLY NHFLDISLEAHM</p>
-----------------	--

YASQWFLTLFTAKFPLYMVFHIDLLLCEGISVIFNVALG
LLKTSKDDLL
LTD FEGALKFFRVQLPKRYRSEENAKKLMELACNMKI
SQKCLKKYEKEYH
TMREQQAQQEDPIERFERENRRLQEANMRLEQENDD
LAHELVTSKIALRK
DLDNAEEKADALNKELLMTKQKLIDAEKRRLEES
AQLKEMCRRELDK
AESEIKKNSSIIGDYKQICSQLSERLEKQQTANKVEIEKI
RQKVDDCERC
REFFNKEGRVKGISSTKEVLDEDTDEEKETLKNQLRE
MELELAQTKLQLV
EAECKIQDLEHHLGLALNEVQAAKKTWFnRTLSSIKTA
TGVQKQKTC

Amino acids 1 to 997
Tags GST tag N-Terminus

Specifications

Our [Abpromise guarantee](#) covers the use of **ab161730** in the following tested applications.

The application notes include recommended starting dilutions; optimal dilutions/concentrations should be determined by the end user.

Applications ELISA
Western blot

Form Liquid

Additional notes Protein concentration is above or equal to 0.05 mg/ml.

Preparation and Storage

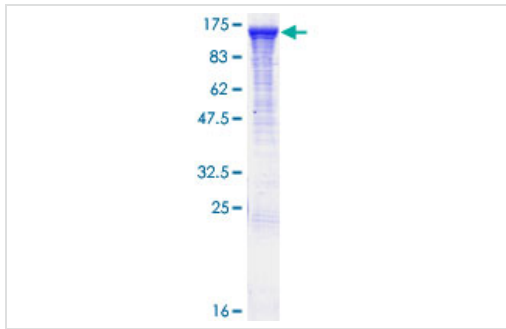
Stability and Storage Shipped on dry ice. Upon delivery aliquot and store at -80°C. Avoid freeze / thaw cycles.
pH: 8.00
Constituents: 0.31% Glutathione, 0.79% Tris HCl

General Info

Relevance May act as a GTPase-activating protein of RAB6A. May play a role in microtubule nucleation by centrosome. May participate in a RAB6A-mediated pathway involved in the metaphase-anaphase transition.

Cellular localization Cytoplasm, cytosol. Centrosome

Images



ab161730 on a 12.5% SDS-PAGE stained with Coomassie Blue.

SDS-PAGE - Recombinant Human RABGAP1
protein (ab161730)

Please note: All products are "FOR RESEARCH USE ONLY AND ARE NOT INTENDED FOR DIAGNOSTIC OR THERAPEUTIC USE"

Our Abpromise to you: Quality guaranteed and expert technical support

- Replacement or refund for products not performing as stated on the datasheet
- Valid for 12 months from date of delivery
- Response to your inquiry within 24 hours
- We provide support in Chinese, English, French, German, Japanese and Spanish
- Extensive multi-media technical resources to help you
- We investigate all quality concerns to ensure our products perform to the highest standards

If the product does not perform as described on this datasheet, we will offer a refund or replacement. For full details of the Abpromise, please visit <https://www.abcam.com/abpromise> or contact our technical team.

Terms and conditions

- Guarantee only valid for products bought direct from Abcam or one of our authorized distributors