

Product datasheet

Recombinant Human RAC3 protein ab103470

1 Image

Description

Product name	Recombinant Human RAC3 protein	
Purity	> 95 % SDS-PAGE. ab103470 was purified using conventional chromatography techniques.	
Expression system	Escherichia coli	
Accession	P60763	
Protein length	Full length protein	
Animal free	No	
Nature	Recombinant	
Species	Human	
Sequence	MQAIKCVVVG DGAVGKTCLLISYTTNAFPGEYIPTVFDNYS ANVMVDGKP VNLGLWDTAGQEDYDRLRPLSYPQTDVFLICFSLVSPASF ENVRAKWYPE VRHHCPTHPIILLVGTKLDRDDKDTIERLRDCKLAPITYPQG LAMAREIG SVKYLECSALTQRGLKTVFDEAIRAVLCPPPVKKPGKKC	
Predicted molecular weight	21 kDa	
Amino acids	1 to 189	

Specifications

Our [Abpromise guarantee](#) covers the use of **ab103470** in the following tested applications.

The application notes include recommended starting dilutions; optimal dilutions/concentrations should be determined by the end user.

Applications	SDS-PAGE Mass Spectrometry
Mass spectrometry	MALDI-TOF
Form	Liquid

Preparation and Storage

Stability and Storage Shipped at 4°C. Store at +4°C short term (1-2 weeks). Upon delivery aliquot. Store at -20°C or -

80°C. Avoid freeze / thaw cycle.

pH: 8.00

Constituents: 0.00174% PMSF, 0.0308% DTT, 0.316% Tris HCl, 0.0292% EDTA, 10% Glycerol (glycerin, glycerine), 1.16% Sodium chloride

General Info

Function

Plasma membrane-associated small GTPase which cycles between an active GTP-bound and inactive GDP-bound state. In active state binds to a variety of effector proteins to regulate cellular responses, such as cell spreading and the formation of actin-based protusions including lamellipodia and membrane ruffles. Promotes cell adhesion and spreading on fibrinogen in a CIB1 and alpha-IIb/beta3 integrin-mediated manner.

Tissue specificity

Highest levels in brain, also detected in heart, placenta and pancreas.

Sequence similarities

Belongs to the small GTPase superfamily. Rho family.

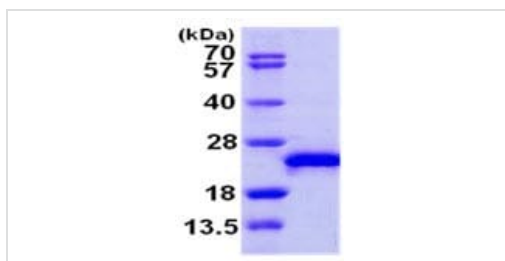
Post-translational modifications

(Microbial infection) Glycosylated at Tyr-32 by Photorhabdus asymbiotica toxin PAU_02230. Mono-O-GlcNAcylation by PAU_02230 inhibits downstream signaling by an impaired interaction with diverse regulator and effector proteins of Rac and leads to actin disassembly.

Cellular localization

Cytoplasm. Endomembrane system. Cell projection, lamellipodium. Cytoplasm, perinuclear region. Cell membrane. Cytoplasm, cytoskeleton. Membrane-associated when activated. Colocalizes with NRBP to endomembranes and at the cell periphery in lamellipodia. Colocalized with CIB1 in the perinuclear area and at the cell periphery.

Images



15% SDS-PAGE analysis of 3µg ab103470.

SDS-PAGE - Recombinant Human RAC3 protein
(ab103470)

Please note: All products are "FOR RESEARCH USE ONLY. NOT FOR USE IN DIAGNOSTIC PROCEDURES"

Our Abpromise to you: Quality guaranteed and expert technical support

- Replacement or refund for products not performing as stated on the datasheet
- Valid for 12 months from date of delivery
- Response to your inquiry within 24 hours
- We provide support in Chinese, English, French, German, Japanese and Spanish
- Extensive multi-media technical resources to help you

- We investigate all quality concerns to ensure our products perform to the highest standards

If the product does not perform as described on this datasheet, we will offer a refund or replacement. For full details of the Abpromise, please visit <https://www.abcam.com/abpromise> or contact our technical team.

Terms and conditions

- Guarantee only valid for products bought direct from Abcam or one of our authorized distributors