

Product datasheet

Recombinant Human RERE protein ab116842

1 Image

Description

Product name	Recombinant Human RERE protein	
Expression system	Wheat germ	
Accession	Q9P2R6	
Protein length	Protein fragment	
Animal free	No	
Nature	Recombinant	
Species	Human	
Sequence	RYERTDTGEITSYTEDDVVYRPGDCVYVCRRPNTPYFI CSIQDFKLVH NSQACCRSPTPALCDPPACSLPVASQPPQHLSEAGR GPVGSKRDHLLMNV KWYYRQSEV	
Predicted molecular weight	38 kDa including tags	
Amino acids	85 to 193	

Specifications

Our [Abpromise guarantee](#) covers the use of **ab116842** in the following tested applications.

The application notes include recommended starting dilutions; optimal dilutions/concentrations should be determined by the end user.

Applications	SDS-PAGE ELISA Western blot
Form	Liquid
Additional notes	Protein concentration is above or equal to 0.05 mg/ml. Best use within three months from the date of receipt of this protein.

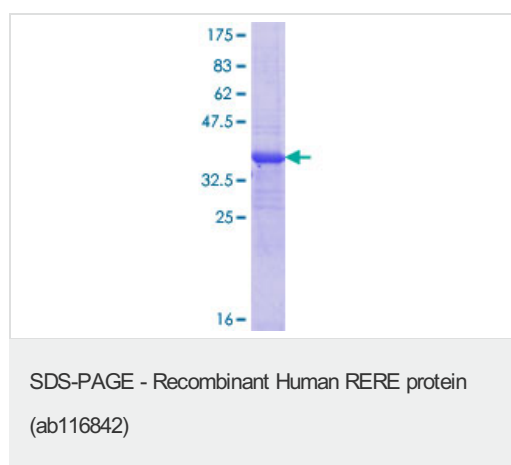
Preparation and Storage

Stability and Storage	Shipped on dry ice. Upon delivery aliquot and store at -80°C. Avoid freeze / thaw cycles. pH: 8.00 Constituents: 0.3% Glutathione, 0.79% Tris HCl
------------------------------	---------------------------------------------------------------------------------------------------------------------------------------------------------

General Info

Function	Plays a role as a transcriptional repressor during development. May play a role in the control of cell survival. Overexpression of RERE recruits BAX to the nucleus particularly to POD and triggers caspase-3 activation, leading to cell death.
Tissue specificity	Widely expressed. Expressed in tumor cell lines.
Involvement in disease	Note=A chromosomal aberration involving RERE is found in the neuroblastoma cell line. Translocation t(1;15)(p36.2;q24).
Sequence similarities	Contains 1 BAH domain. Contains 1 ELM2 domain. Contains 1 GATA-type zinc finger. Contains 1 SANT domain.
Domain	The interaction with ATN1 is mediated by the coiled coil domain.
Cellular localization	Nucleus. Localized in nuclear bodies of variables size. Colocalized with PML and BAX in nuclear PODs.

Images



12.5% SDS-PAGE stained with Coomassie Blue showing ab116842 at approximately 37.62 kDa.

Please note: All products are "FOR RESEARCH USE ONLY. NOT FOR USE IN DIAGNOSTIC PROCEDURES"

Our Abpromise to you: Quality guaranteed and expert technical support

- Replacement or refund for products not performing as stated on the datasheet
- Valid for 12 months from date of delivery
- Response to your inquiry within 24 hours

- We provide support in Chinese, English, French, German, Japanese and Spanish
- Extensive multi-media technical resources to help you
- We investigate all quality concerns to ensure our products perform to the highest standards

If the product does not perform as described on this datasheet, we will offer a refund or replacement. For full details of the Abpromise,

please visit <https://www.abcam.com/abpromise> or contact our technical team.

Terms and conditions

- Guarantee only valid for products bought direct from Abcam or one of our authorized distributors