

Product datasheet

Recombinant Human RFC protein ab152691

1 Image

Description

<b>Product name</b>	Recombinant Human RFC protein
<b>Expression system</b>	Wheat germ
<b>Accession</b>	<a href="#">P41440-3</a>
<b>Protein length</b>	Full length protein
<b>Animal free</b>	No
<b>Nature</b>	Recombinant
<b>Species</b>	Human
<b>Sequence</b>	<p>MVPSSPAVEKQVPVEPGDPELRSWRRLVCYLCFYGFM            AQIRPGESFITP            YLLGPDKNFTREQVTNEITPVLSYSYLAVLVPVFLLDYLR            TPVLLLQG            LSFVSVWLLLLLGHSSVAHMQLMELFYVTMAARIAYSSYIF            SLVRPARYQ            RVAGYSRAAVLLGVFTSSVLGQLLTVGRVSFSTLNYSLA            FLTFSVLA            LFLKRPKRSLFFNRDDRGRCEASELERMNPGGKLG            HALRVACGDSV            LARMLRELGDRLRRPQLRLWVWFNSAGYYLVVYVHI            LWNEVDPTTN            SARVYNGAADAASTLLGAITSFAAGFVKIRWARWSKLLIAG            VTATQAGLV            FLLAHRHPSSMWCYAAFVLFGRSYQFLVPIATFQIASSLS            KELCALVF            GVNTFFATVKTITFVSDVRGLGLPVRKQNEELHVASLSL            WKSHLRLA            ADTSSSEGSSGSPRSWFLSPTLRAALHGPVCPSEVCP            S</p>
<b>Predicted molecular weight</b>	81 kDa
<b>Amino acids</b>	1 to 489

Specifications

Our [Abpromise guarantee](#) covers the use of **ab152691** in the following tested applications.

The application notes include recommended starting dilutions; optimal dilutions/concentrations should be determined by the end user.

<b>Applications</b>	ELISA SDS-PAGE Western blot
<b>Form</b>	Liquid
<b>Additional notes</b>	This product was previously labelled as SLC19A1.

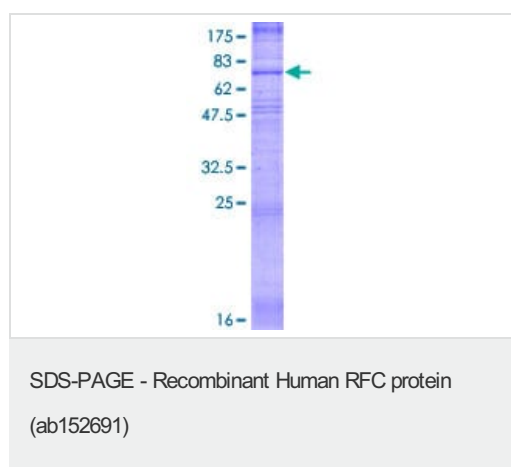
## Preparation and Storage

<b>Stability and Storage</b>	Shipped on dry ice. Upon delivery aliquot and store at -80°C. Avoid freeze / thaw cycles. pH: 8.00 Constituents: 0.31% Glutathione, 0.79% Tris HCl
------------------------------	--

## General Info

<b>Function</b>	Transporter for the intake of folate. Uptake of folate in human placental choriocarcinoma cells occurs by a novel mechanism called potocytosis which functionally couples three components, namely the folate receptor, the folate transporter, and a V-type H(+)-pump.
<b>Tissue specificity</b>	Placenta, liver, and to a much smaller extent, in lung.
<b>Sequence similarities</b>	Belongs to the reduced folate carrier (RFC) transporter (TC 2.A.48) family.
<b>Post-translational modifications</b>	Heavily glycosylated.
<b>Cellular localization</b>	Membrane.

## Images



12.5% SDS-PAGE showing ab152691 stained with Coomassie Blue

**Please note:** All products are "FOR RESEARCH USE ONLY. NOT FOR USE IN DIAGNOSTIC PROCEDURES"

## **Our Abpromise to you: Quality guaranteed and expert technical support**

---

- Replacement or refund for products not performing as stated on the datasheet
- Valid for 12 months from date of delivery
- Response to your inquiry within 24 hours
  
- We provide support in Chinese, English, French, German, Japanese and Spanish
- Extensive multi-media technical resources to help you
- We investigate all quality concerns to ensure our products perform to the highest standards

If the product does not perform as described on this datasheet, we will offer a refund or replacement. For full details of the Abpromise, please visit <https://www.abcam.com/abpromise> or contact our technical team.

## **Terms and conditions**

---

- Guarantee only valid for products bought direct from Abcam or one of our authorized distributors